



COLLEGE AND ME

Hardin-Simmons University



Role of SLP graduate clinicians:

Facilitate a welcoming environment that targets different aspects of communication necessary for successful social interactions.

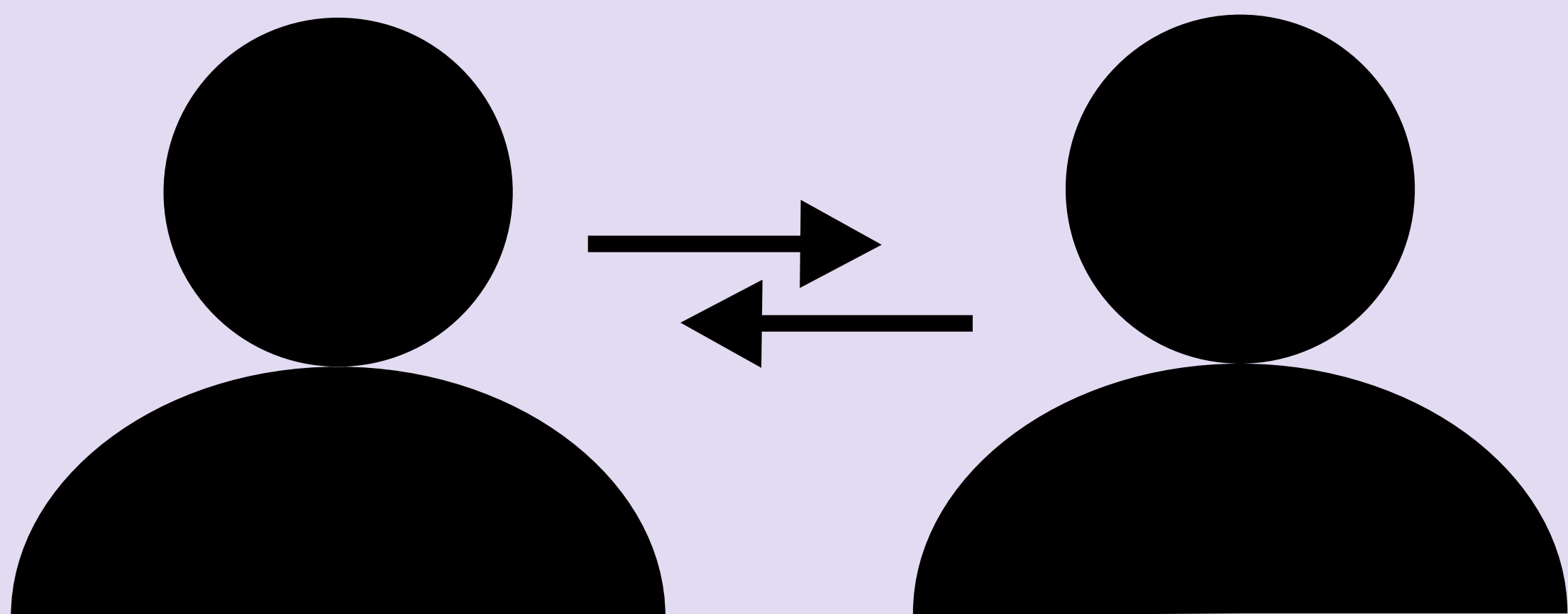


What is pragmatic language?

Pragmatics is the way we use language during social interactions. It includes a variety of skills that are utilized based on the specific communicative environment (Shipley & McAfee, 2025).

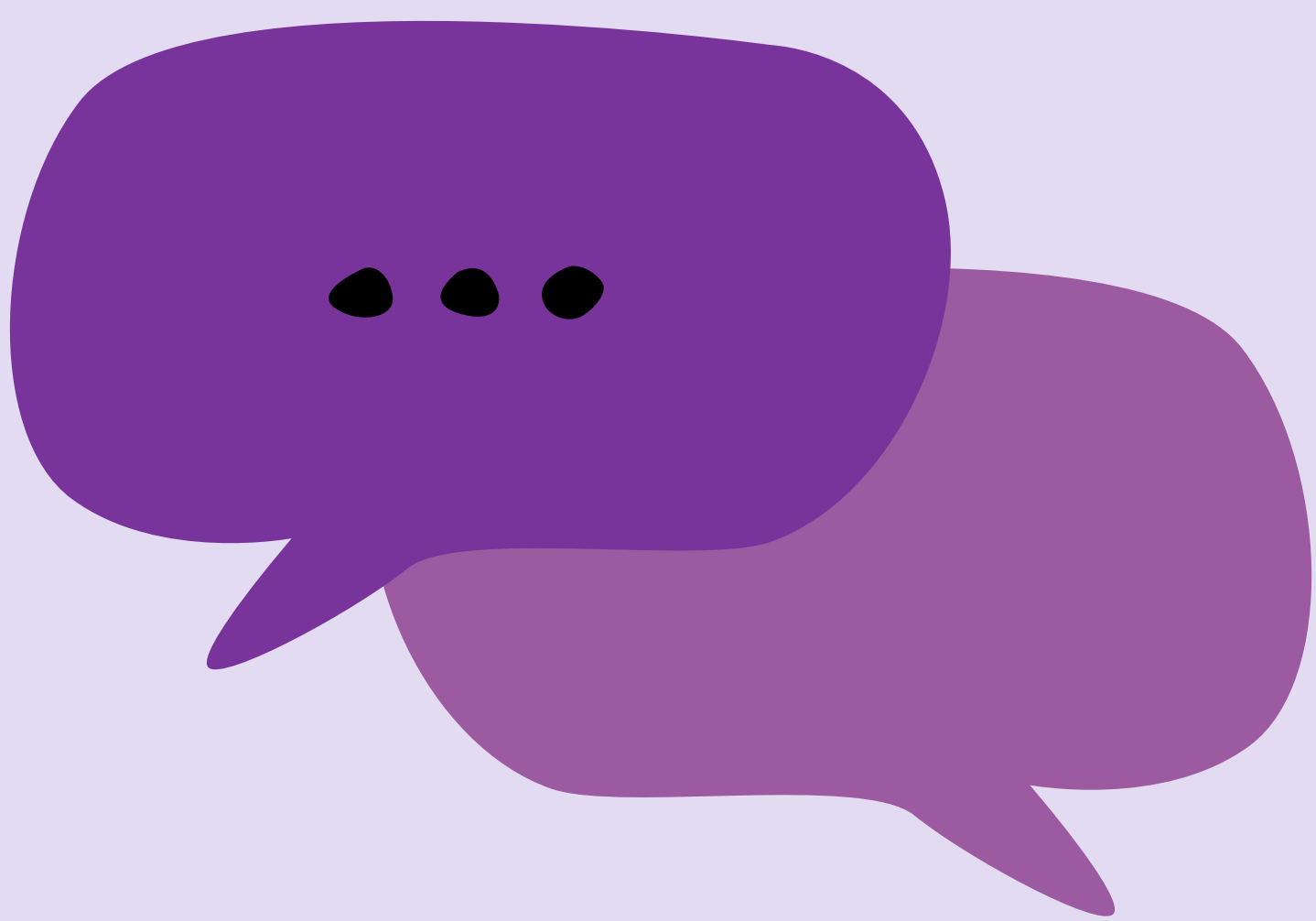
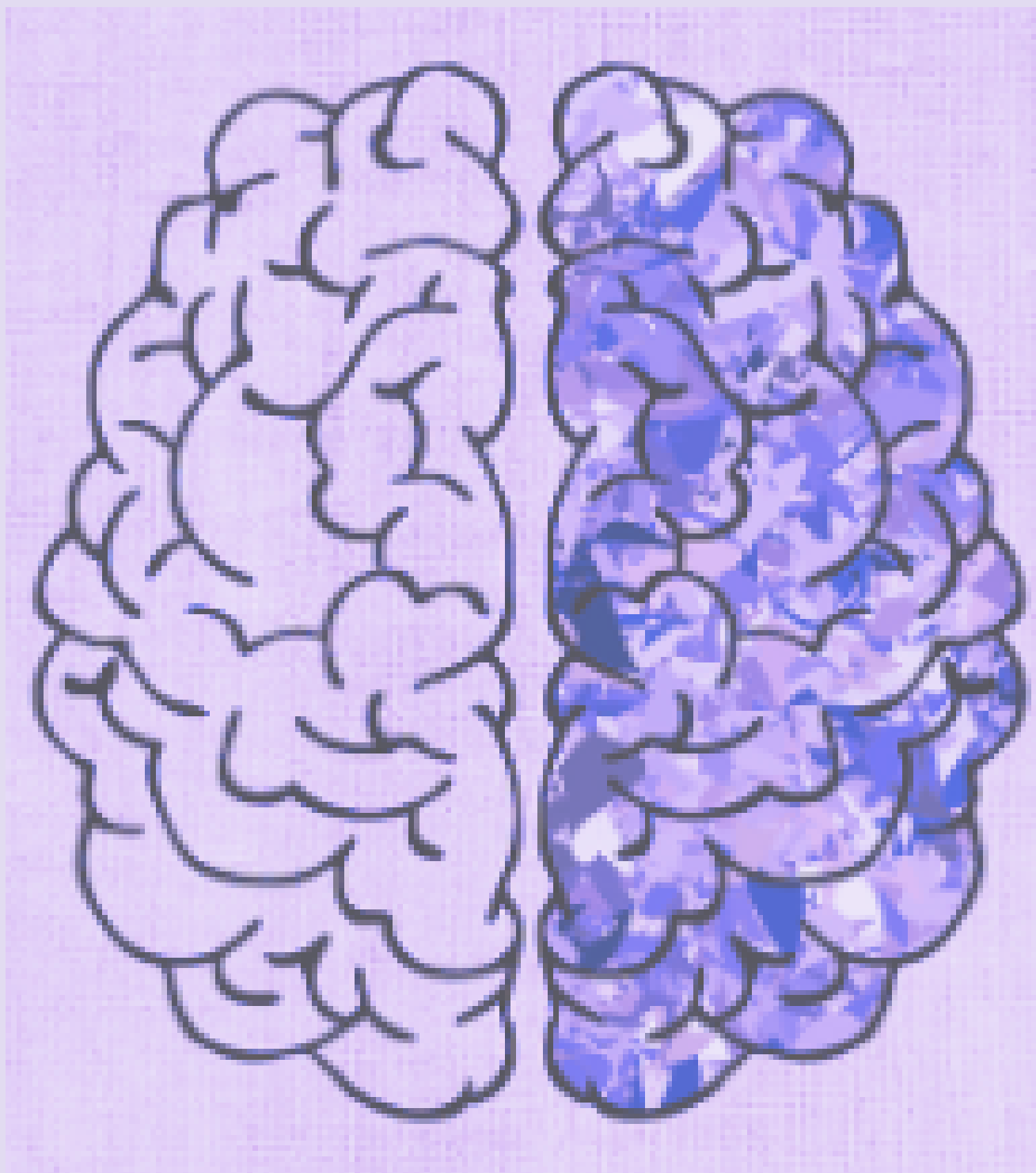
Reference:

Shipley, K. G., & McAfee, J. G. (2025). *Assessment in speech-language pathology: A resource manual* (7th ed.). Plural Publishing, Inc.



What is College and Me (CAM)?

Students who are neurodivergent may need extra guidance with social interaction. CAM was created by the Speech Language Pathology (SLP) Graduate Program in collaboration with the Office of Disability Services to help bridge the social gap for these students.



Skills targeted

- Self-advocacy
- Pragmatic language
- Initiating conversations
- Perspective taking

Activities used

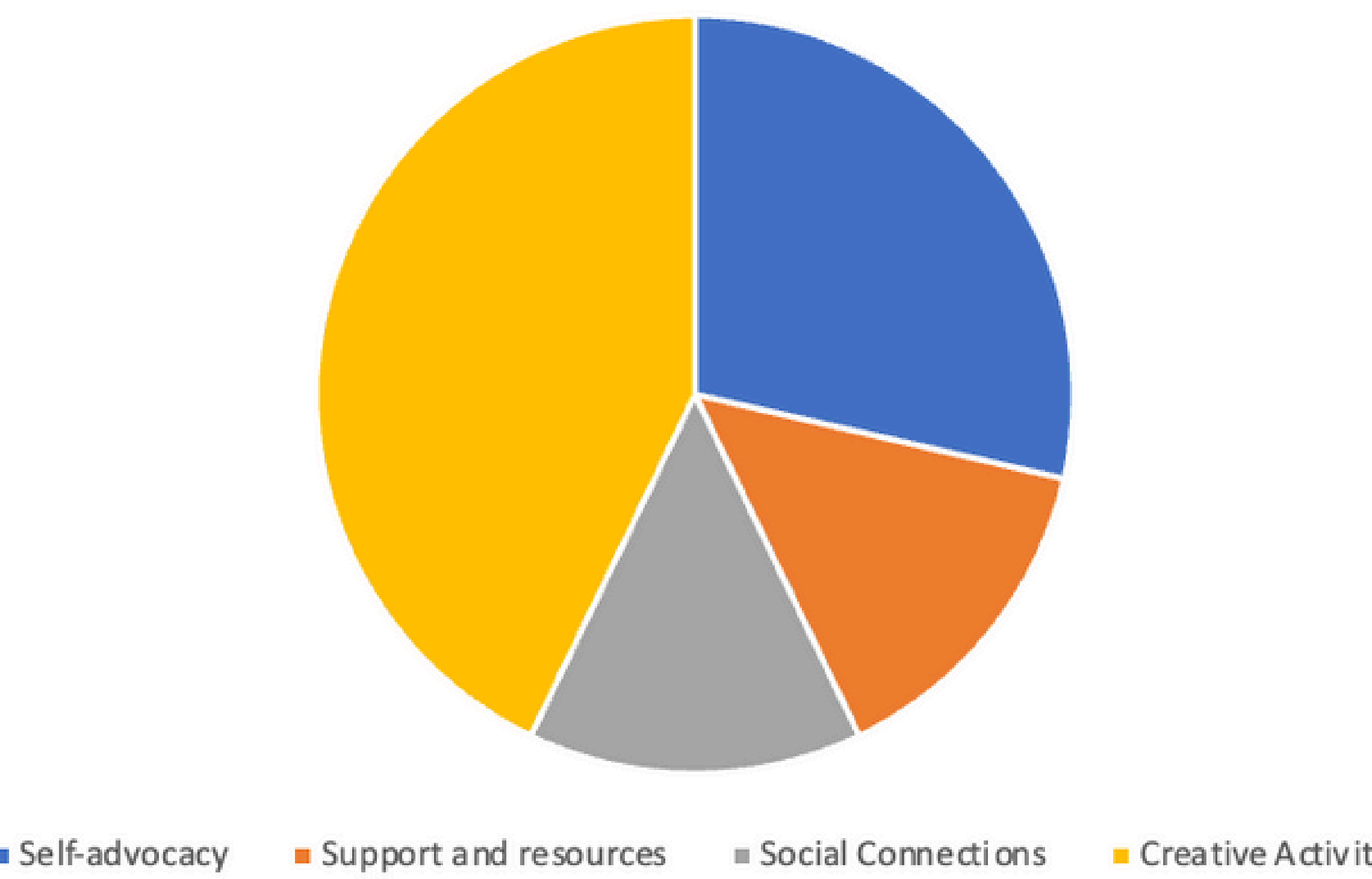
- Difficult conversation cards
- Hypothetical social situations
- Provided informational handouts
- Mock interview questions
- Role-play situations

Tips for the classroom:

- Avoid ambiguous language
- Allow for extra processing time
- Provide alternative options
- Support different learning styles
- Highlight unique strengths

Survey results from CAM students

What part of the program has been most helpful for you?



How supported did you feel within the program?

