

WCAG 2.1 Map



- 1.2.1 Audio-only and Video-only (Prerecorded)
- 1.2.2 Captions (Prerecorded)
- 1.2.3 Audio Description or Media Alternative (Prerecorded)

- 1.2.4 Captions (live)
- 1.2.5 Audio Description (Prerecorded)

- 1.2.6 Sign Language (Prerecorded)
- 1.2.7 Extended Audio Description (Prerecorded)
- 1.2.8 Media Alternative (Prerecorded)
- 1.2.9 Audio-only (Live)

- 1.3.1 Info and Relationships
- 1.3.2 Meaningful Sequence
- 1.3.3 Sensory Characteristics

- 1.3.4 Orientation *
- 1.3.5 Identify Input Purpose *

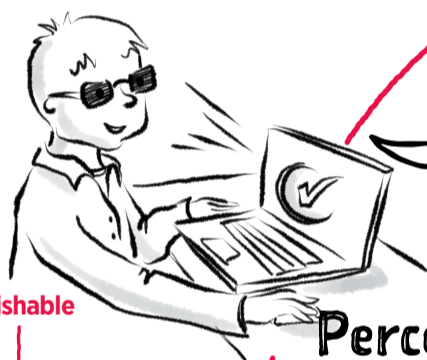
- 1.3.6 Identify Purpose *

1.3 Adaptable

1.2 Time Based Media

1.1 Text Alternatives

- 1.1.1 Non-text Content



Information and user interface components must be presentable to users in ways they can perceive.

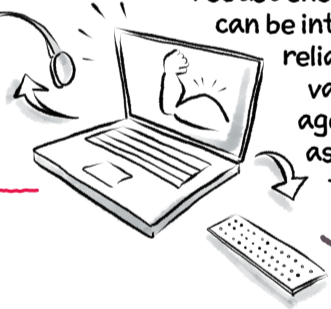
Perceivable

1.4 Distinguishable

- 1.4.1 Use of Color
- 1.4.2 Audio Control

- 1.4.3 Contrast (Minimum)
- 1.4.4 Resize Text
- 1.4.5 Images of Text
- 1.4.10 Reflow *
- 1.4.11 Non-Text Contrast *
- 1.4.12 Text Spacing *
- 1.4.13 Content on Hover or Focus *

- 1.4.6 Contrast (Enhanced)
- 1.4.7 Low or No Background Audio
- 1.4.8 Visual Presentation
- 1.4.9 Images of Text (No Exception)



Content must be robust enough that it can be interpreted reliably by a wide variety of user agents, including assistive technologies.

Robust

4.1 Compatible

- 4.1.1 Parsing
- 4.1.2 Name, Role, Value
- 4.1.3 Status Messages *



Operable

User interface components and navigation must be operable.

2.1 Keyboard Accessible

- 2.1.1 Keyboard
- 2.1.2 No Keyboard Trap
- 2.1.4 Character Key Shortcuts *

- 2.1.3 Keyboard (No Exception)

2.2 Enough Time

- 2.2.1 Timing Adjustable
- 2.2.2 Pause, Stop, Hide

- 2.2.3 No Timing
- 2.2.4 Interruptions
- 2.2.5 Re-authenticating
- 2.2.6 Timeouts *

2.3 Seizures & Physical Reactions

- 2.3.1 Three Flashes or Below Threshold

- 2.3.2 Three Flashes
- 2.3.3 Animation from Interactions *

2.4 Navigable

2.5 Input Modalities

- 2.5.1 Pointer Gestures *
- 2.5.2 Pointer Cancellation *
- 2.5.3 Label in Name *
- 2.5.4 Motion Actuation *

- 2.5.5 Target Size *
- 2.5.6 Concurrent Input Mechanisms *

Understandable

Information and the operation of user interface must be understandable.

3.2 Predictable

- 3.2.1 On Focus
- 3.2.2 On Input

- 3.2.3 Consistent Navigation
- 3.2.4 Consistent Identification

- 3.2.5 Change on Request

3.1 Readable

- 3.1.1 Language of Page

- 3.1.2 Language of Parts

- 3.1.3 Unusual Words
- 3.1.4 Abbreviations
- 3.1.5 Reading Level
- 3.1.6 Pronunciation

3.3 Input Assistance

- 3.3.1 Error Identification
- 3.3.2 Labels or Instructions

- 3.3.3 Error Suggestion
- 3.3.4 Error Prevention (Legal, Financial, Data)

- 3.3.5 Help
- 3.3.6 Error Prevention (All)

WCAG 2.1

intopia

intopia.digital

Visual map of Web Content Accessibility Guidelines 2.1
Based on World Wide Web Consortium documentation
available at <https://www.w3.org/TR/WCAG21>

Licensed under Creative Commons Attribution-ShareAlike 4.0 International

Key: * New in WCAG 2.1
AA Success Criteria Level