

WELCOME TO

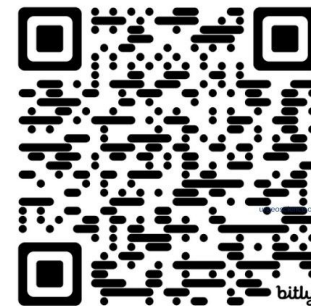
Science & Society's Year in Review

Highlights from 2023 &
our asynchronous AGU23
business meeting



bit.ly/AGUSciSociety

[@AGUSciSociety](https://twitter.com/AGUSciSociety)



bit.ly/AGUSciSociety



[@AGUSciSociety](https://www.instagram.com/AGUSciSociety)

WELCOME TO

Science & Society's Year in Review

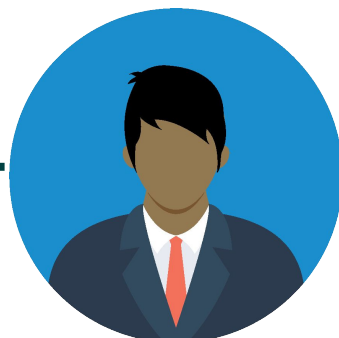
Highlights from 2023 & our asynchronous AGU23 business meeting



AGUSciSociety



bit.ly/AGUSciSociety



A message from the SY leadership

The **Science & Society (SY) Section** continues to grow! This year we celebrated people working at the science-society interface, and shared the amazing skills and insights of our members with the broader AGU community and beyond.

This presentation provides a year-in-review and sneak peek of exciting things to come. We look forward to engaging with you more in 2024!



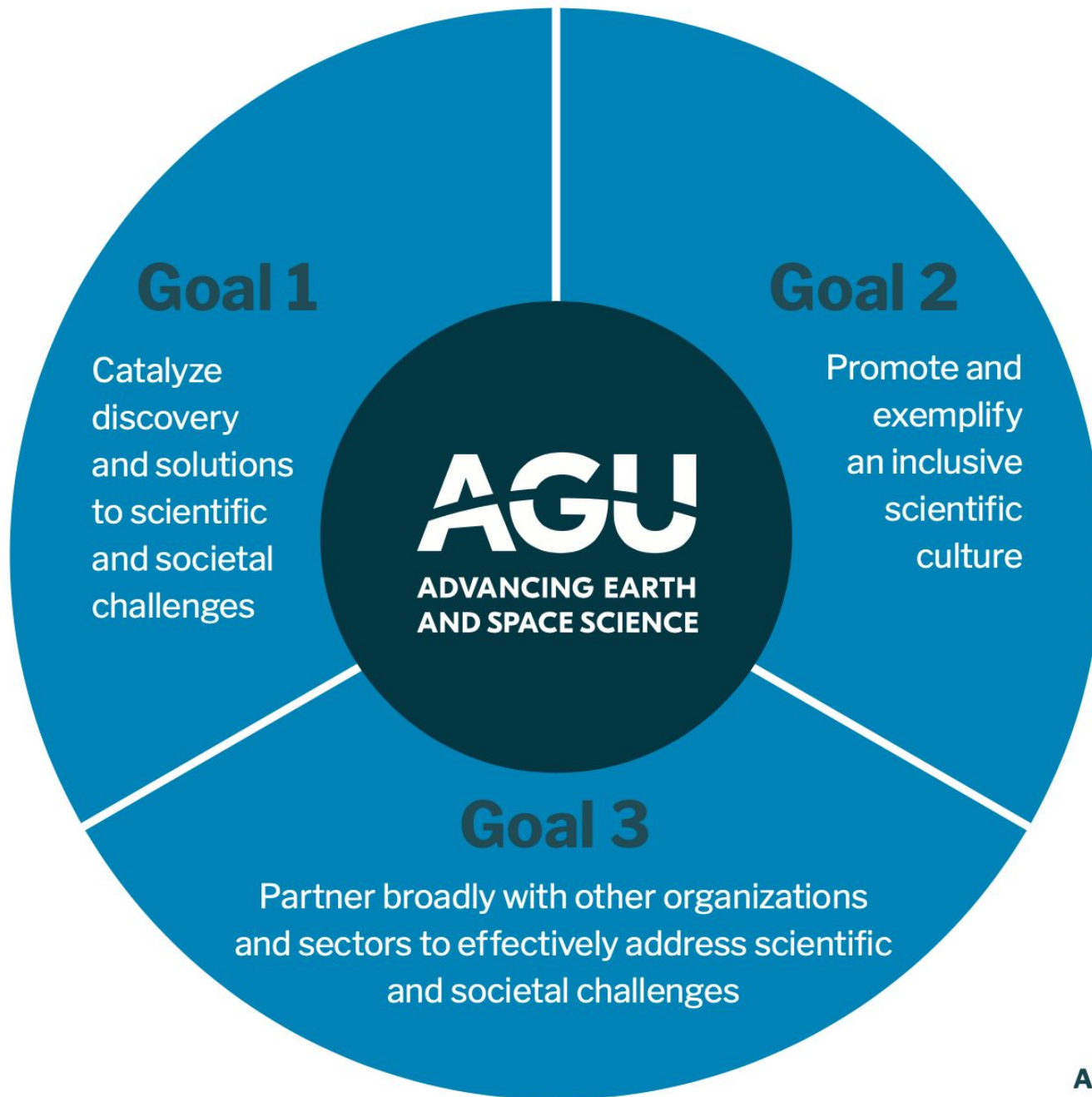
Kevin Reed
SY President



Kripa Jagannathan
SY President-elect



Julie Vano
SY Past President



Science & Society
helps lead the implementation of the AGU Strategic Plan, which focuses on:

“discovery and solutions science”

Science & Society Purpose

The AGU Science and Society (SY) section works to:

1. support and grow a community that actively facilitates stronger connections between societies and Earth and space sciences, and
2. foster innovations within AGU that better enables discoveries and solutions in the geosciences to benefit humanity.





Science & Society Goals

Serve as a place within AGU for those whose scholarship includes **science policy, community science, citizen science, science communication, social and behavioral sciences, and art and science**



Create a welcoming community for **decision makers and practitioners** to maintain strong connections and partnerships with the Earth and space sciences

Elevate geoscience in diverse communities, especially those **historically underserved by and underrepresented in science**



Provide learning opportunities about how the Earth and space sciences can inform **policy making**, best practices in **communicating science**, and how to effectively **work with communities and decision makers**

Build meaningful cross-disciplinary collaborations with **other AGU sections** that enable science to better address societal needs

Sharing information about relevant societal and policy issues with all AGU members

AGU + SY = a team effort for a shared vision



Our Executive Committee works closely with AGU staff from various divisions (see below) to operationalise our ambitious and shared vision.

- Science Policy & Government Relations
- Thriving Earth Exchange
- Sharing Science
- Publications
- Meetings

2023 SY Retreat with members of the SY Executive Committee and AGU Staff



We operate under five
Science and Society "Tracks"

Art & Science Track

Both artists and scientists translate every day abstractions into knowledge and expressions that help us explore and understand the world around us. We welcome scientists, artists, designers, and creators.

AGU23 Art & Science Events

Mon 11 Dec

- 8:30-12:50 | Science & Society: Art & Science - Collaborations | SY11C | Poster Hall

Tue 12 Dec

- 9:43-9:53 | Artists Respond to Wildfire & Storm Disasters | NH21D | 3018 West

Wed 13 Dec

- 16:00-17:30 | Science & Society: Art & Science - Collaborations II eLightning | Theater 5 Hall D S

Thu 14 Dec

- 9:00-10:30 | Poets for Science at AGU: Building a Community Poem | INV41C | Hall E - North
- 13:00-14:00 | Art & science Plenary: Rebeca Méndez | Hall E - North
- 18:00-20:00 | Art x Climate After Dark | San Francisco Exploratorium

Fri 15 Dec

- 12:00-12:45 | Open screening of "Sea Around Us" by Rebeca Méndez | Hall E - North

Eos

SIGN UP FOR NEWSLETTER

Why—and How to—Engage Artists in Science

Breaking down the artificial barriers between science and art can lead to collaborations, broaden the understanding of problems, and lead to new ways of thinking and doing science.

by Katharine Schlegel, Kathryn Semmens, and Mika Tosca

Check out our article in EOS!

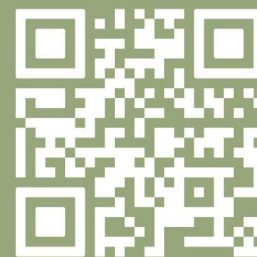


Kathryn Semmens
Track Co-Lead
kalese@gmail.com



Dwight Owens
Track Co-Lead
dwowens[at]uvic.ca

AGU SCIENCE & SOCIETY LEADERS
Contact us for questions & ideas!



Share your voice to this years' AGU23
Community Poem at
DearHuman.PoetsforScience.org

Dear Human



Science Communication Track

14 DEC 2023 | 08:30 - 12:50 | Poster Hall A-C - South | [SY41C](#)
14:10 - 15:40 | Theater VI, Hall D - South | [SY43G](#)

The Power of Science Communication: How to Turn Challenges into Opportunities I Poster and eLightning

Effective science communication includes the efforts of scientists, communications professionals, communities, and teams to communicate the process and values of science and scientific findings to lay or public audiences in accessible ways. Science communication can also increase access to scientific knowledge empowering end users by breaking tangible and intangible barriers. These include but are not limited to global socioeconomic barriers, language barriers, lack of diverse representation, and obstacles encountered by historically underrepresented groups.



Stefania Acosta Ramirez

Track Co-Lead

stefania-acostaramirez@uiowa.edu
[@tefitacosta](#)



Urooj Raja

Track Co-Lead

uraja@luc.edu

AGU SCIENCE & SOCIETY LEADERS

Contact us for questions & ideas!

This year we welcomed the Science Communication Track Co-Lead Urooj Raja. We also thank the other conveners for our Fall Meeting session: Lina C Pérez-Angel and Carolina Ortiz.

Science Policy Track

WIDE. OPEN. SCIENCE.

AGU23

San Francisco, CA & Online Everywhere
11-15 December 2023

Science Policy: Coffee & Conversation

Monday, 11 December at 4:00 pm PT
Marriott Salon 6, San Francisco Marriott Marquis

Join us for coffee, tea, and a conversation with:

- **Kei Koizumi**, Principal Deputy Director for Policy at the White House Office of Science & Technology Policy
 - **James Rattling Leaf**, Tribal Engagement Specialist for the North Central Climate Adaptation Science Center
 - **Neil Matouka**, Integrated Climate Adaptation and Resiliency Program's Fifth Climate Change Assessment Program Manager in the office of the CA Governor's Office of Planning & Research
- #AGU23

Earlier this week, we also hosted a roundtable coffee conversation with policy makers (photo below). We also hosted three sessions: Science Policy Oral (SY13B), Science Policy Poster (SY21D) and Climate Science and Policy Oral (SY22A)

On Wednesday morning, join us for our Climate Science & Policy II Poster session (SY31C)



Gifford Wong
Track Co-Lead
gwong@ida.org



K.L. Akerlof
Track Co-Lead
kakerlof@gmu.edu

AGU SCIENCE & SOCIETY LEADERS
Contact us for questions & ideas!



WIDE. OPEN. SCIENCE.

Climate Science & Policy II Poster

Wednesday, 13 December 08:30--12:50, Poster Hall A-C
• (Moscone South)

In this session, we are highlighting the role of science in climate change policy, from local- and community-level engagement to Federal and international policy making.

Science is critical to addressing climate change responsibly. From coastal towns to rural farms to urban centers, climate change can pose potentially significant challenges to our environment, our health, our communities, and our economic well-being. Climate change can even put our national security at risk such as through regional instability caused by water or food insecurity that might require U.S. military-supported relief activities.

AGU23
San Francisco, CA & Online Everywhere
11-15 December 2023

#AGU23

Science Policy Track



Earlier this week, we hosted a **roundtable coffee conversation with policy makers** (left photo)

- Kei Koizumi, Principal Deputy Director for Policy at White House Office of Science & Technology
- James Rattling Leaf, Tribal Engagement Specialist for North Central Climate Adaptation Science Center
- Neil Matouka, Fifth Climate Change Assessment Program Manager, CA Governor's Office of Planning & Research

We also hosted three sessions

- Science Policy Oral (SY13B)
- Science Policy Poster (SY21D)
- Climate Science & Policy Oral (SY22A)



Gifford Wong

Track Co-Lead
gwong@ida.org



K.L. Akerlof

Track Co-Lead
kakerlof@gmu.edu

AGU SCIENCE & SOCIETY LEADERS

Contact us for questions & ideas!

Climate Science & Policy II Poster

Wed 13 Dec 8:30-12:50 | Poster Hall

In this session, we are highlighting the role of science in climate change policy, from local- and community-level engagement to Federal and international policy making.

Social & Behavioral Sciences Track

Social & behavioral sciences help understand how people & institutions *think, feel, and behave* with respect to scientific knowledge. This track promotes research & practice from these fields, and serves as a bridge between social sciences & other disciplines in geosciences.



Aparna Bamzai-Dodson
Track Co-Lead
abamzai@usgs.gov



Haley Crim
Track Co-Lead
haley.crim@noaa.gov

Join us to explore just, culturally-relevant, evidence-based solutions that catalyze effective environmental action.

Learn from interdisciplinary scientists about justice, communication, planning, and decisionmaking in the contexts of extreme heat, flooding, earthquakes, waste management, climate adaptation, and more!

In-Person Sessions at AGU23

Oral Wednesday Dec. 13, 8:30-10am, 2020 West

Poster Wednesday Dec. 13, 2:10-6:30pm, Poster Hall



AGU SCIENCE & SOCIETY LEADERS
Contact us for questions & ideas!

Community & Citizen Science Track

Our sessions encourage dialog on Community Science and Citizen Science (CCS) cutting across research, practice, and professionalization of the field. In Community Science, scientists and communities do science together to advance one or more community priorities. We encourage communities, particularly historically marginalized and oppressed communities, to guide, participate in, learn from, and benefit from science. Citizen Science, similarly, engages the public to collaborate with scientists in research and monitoring, from local to global investigations.



Ryan Meyer
Track Co-Lead
rmmeyer@ucdavis.edu



Todd Harwell
Track Co-Lead
tharwell@pdx.edu

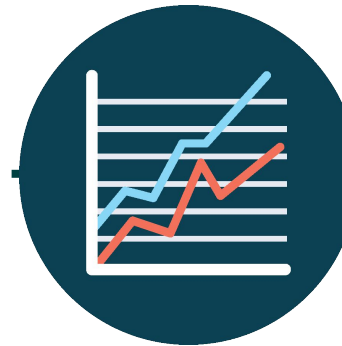
AGU SCIENCE & SOCIETY LEADERS
Contact us for questions & ideas!

AGU23 Events

- Oral SY42B | Thu 14 Dec 10:20-11:50 | 2020 Moscone West
- Poster SY43E | Thu 14 Dec 14:10-18:30 | Poster Hall
- Poster SY43C | Thu 14 Dec 14:10-18:30 | Poster Hall
- Oral SY52A | Fri 15 Dec | 10:20-11:50 | 2018 Moscone West
- Also check out events by AGU Thriving Earth Exchange

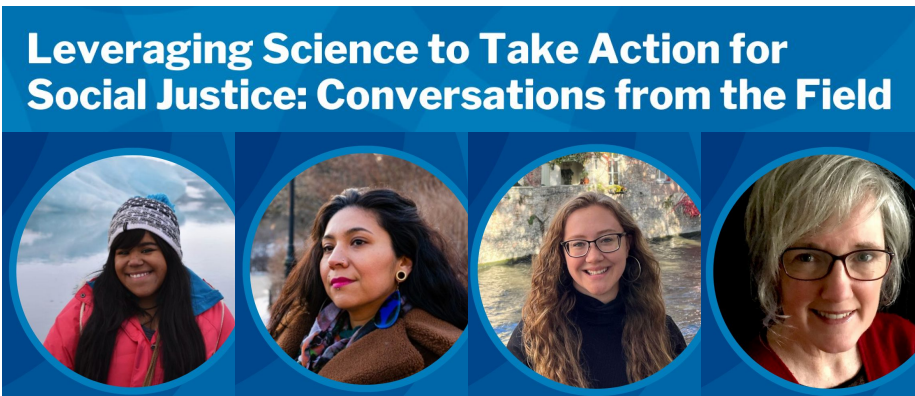
Our Activities

- Science & Society Dialogues
- Meeting Planning
- Justice, Equity, Diversity & Inclusion (JEDI)
- Honors & Awards
- Students & Early-Career Activities
- Social Media & Website
- Liaison Programming



SCIENCE & SOCIETY DIALOGUES

Engaging with AGU Science & Society members & those outside AGU Fall Meeting, we organized free Science & Society webinars: 5 in 2022 and 2 in 2023.



Watch here



Stay tuned for more SY Dialogues in 2024!

Fall Meeting Planning Highlights

- Over 50 Science & Society sessions this year!!
- Track sessions on throughout the week!
- Sessions on a range of topics including:
 - Science diplomacy
 - Transboundary water
 - Indigenous Science to Action
 - Active hope
 - US Fifth National Climate assessment
- The planning committee championed through several challenges with conveners

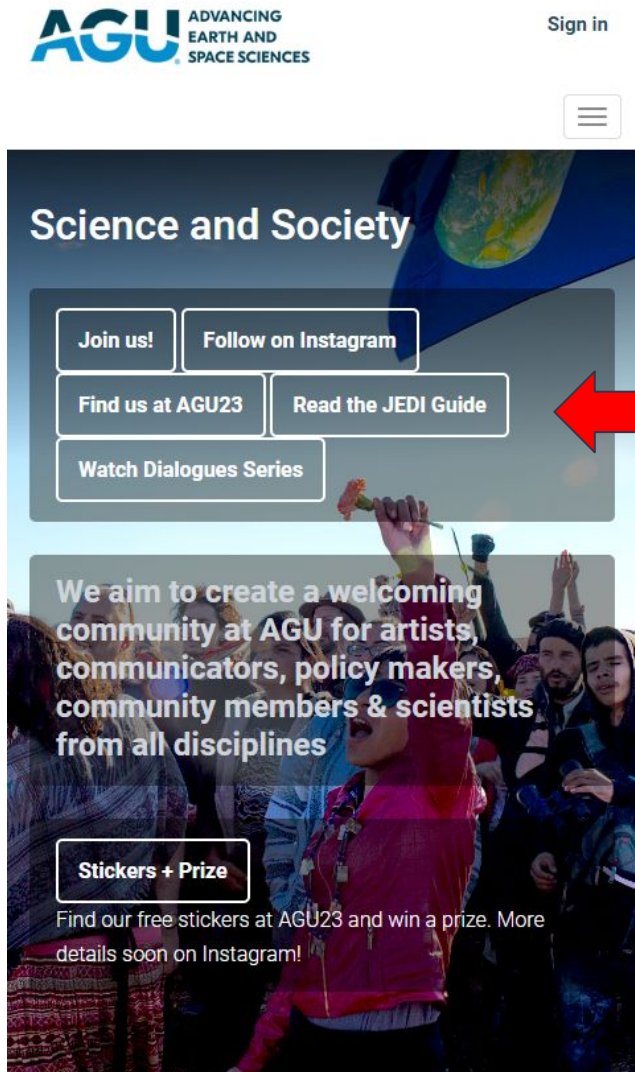


Holly Mayton
*Fall Meeting Planning
Committee Lead*



Shenyue Jia
*Fall Meeting Planning
Committee Rep*

Justice, Equity, Diversity & Inclusion



Kripa Jagannathan
SY President-elect

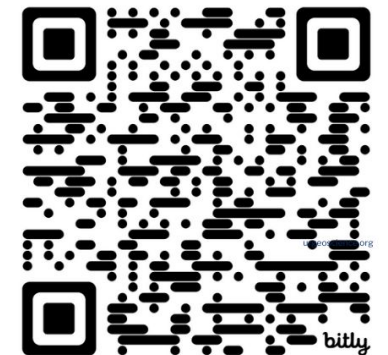


Chris Hyun
*Social Media Coordinator
& Webmaster*

Read the Science & Society JEDI Guide for Session Convenors

In 2023, we focused our SY Dialogue series on JEDI relevant topical areas to spark open discussion and debates on key issues.

We also revamped the JEDI Guide for session convenors.



OSPA - Continued Improvements

In 2022 we revamped Outstanding Student Presentation Awards (OSPA) rubric to better suit the SY section. This year we are piloting a new process by developing guidance and a training webinar for SY OSPA judges so that they can provide constructive feedback to SY student presenters.

We hope that these steps can help students have a positive experience with OSPA and mitigate biases in reviews.



Yolanda Lin
OSPA Coordinator

OSPA Rubric

Point Value → <i>The criteria below are from the AGU OSPA program</i>	1	2	3	4	5
Presentation: Visuals, effective use of allotted time or space, diction (enunciation, volume, and clarity), general style, liveliness, and stage presence.	<ul style="list-style-type: none"> Visuals are not used, content not organized. Allotted time, space not used well. Presentation is missing logical flow, unengaged. Presentation unprepared; delivery is scattered, lacks interest. 	<ul style="list-style-type: none"> Visuals used, but don't support presentation; content mostly disorganized. Allotted time, space mostly not used well. Presentation mostly lacks flow, not engaging. Mostly unprepared; delivery mostly scattered, lacks interest. 	<ul style="list-style-type: none"> Some good visuals that support presentation, clear design, organized. Allotted time, space mostly used well, could be improved. Presentation is engaging, but loses flow or audience attention regularly. Presentation somewhat prepared; delivered with some clarity, interest. 	<ul style="list-style-type: none"> Good use of visuals, clear design, mostly organized. Allotted time, space mostly used well. Presentation is mostly engaging, but loses flow or audience attention occasionally. Presentation mostly delivered with clarity, interest, could be more prepared. 	<ul style="list-style-type: none"> Excellent use of visuals, clear design, organized. Effective use of allotted time, space. Engaging presentation, logical flow, catches audiences' attention. Presentation prepared and delivered with exceptional clarity, interest.
Content: Organization and logic, appropriate comprehension/ knowledge of field, clear explanation/ ability to answer questions, and significance and originality.	<ul style="list-style-type: none"> Knowledge of the field limited, seem unfamiliar with the research or work. Research topic or work, problem, and implications unassociated with SY and/or session themes. Unable to offer explanations of the work (e.g., approach, methods, results, outcomes, etc.) or answer questions. Research seems unoriginal, and value-add and implications of the work are unclear. 	<ul style="list-style-type: none"> Knowledge of the field mostly limited, somewhat unfamiliar with the research or work. Mostly unclear how research topic or work, problem, and implications connect to SY and/or session themes. Occasionally offers explanations of the work (e.g., approach, methods, results, outcomes, etc.) or answers questions well. Research mostly lacks originality, value-add and implications of the work are mostly unclear. 	<ul style="list-style-type: none"> Basic knowledge of the field demonstrated, research project mostly understood or work. Research topic or work, problem statement, and implications somewhat relevant to SY and/or session themes. Explains most aspects of the work, unclear on others; answers some questions. Research is somewhat original or interesting, and value-add and implications of the work are somewhat clear. 	<ul style="list-style-type: none"> Sufficient knowledge of the field, good comprehension of the research or work. Mostly appropriate research topic or work, problem mostly clear, and implications mostly relevant to SY and/or session themes. Offers clear explanations of most aspects of the work, provides answers to most questions. Research is mostly original, interesting, and value-add and implications are mostly clear. 	<ul style="list-style-type: none"> Exceptional knowledge of the field, deep comprehension of the research or work. Appropriate research topic or work, problem is clearly stated, and implications tailored to SY and/or session themes. Offers clear explanations of all aspects of the work, provides thoughtful answers to questions. Research is original, interesting, and value and implications of the work are clearly articulated.
Overall Impression: Compared to other students' presentations	Needs Much Improvement <ul style="list-style-type: none"> Rationale or SY connection unclear. Work lacks rigor, minimal effort put into the work. Poster or presentation needs much improvement, more preparation, increased awareness. 	Needs Some Improvement <ul style="list-style-type: none"> Mostly unclear on the rationale or the SY connection. Work lacks some rigor; effort appears to be limited. Poster or presentation needs improvement, lacking in awareness, adaptability, or preparation. 	Average Among Peers <ul style="list-style-type: none"> Mostly clear on the reasons they are doing the work, rationale, and the SY connection. Demonstrates average creativity, rigor, or effort. Poster or presentation delivered well, shows average awareness, adaptability, or preparation. 	Exceeds Peers in Many Areas <ul style="list-style-type: none"> Good clarity on the reasons they are doing the work, rationale, and the SY connection. Demonstrates above average creativity, rigor, or effort. Poster or presentation delivered well, shows above average awareness, adaptability, and preparation. 	Exceeds their Peers <ul style="list-style-type: none"> Unambiguously conveys the reasons they are doing the work, rationale, and the SY connection. Demonstrates significant creativity, rigor, and effort. Skilfully delivered poster or presentation, showing well above average awareness, adaptability, and preparation.

Comments: Comments from judges are also encouraged in order to distinguish papers with similar scores

Learn more at
**[connect.agu.org/
scienceandsociety/
about/awards](https://connect.agu.org/scienceandsociety/about/awards)**

Student & Early Career Activities

Two student focused fall meeting events:

11 Dec 18:30 | **Section Event** - Connections in Science Education and Communication - Student and Early Career Happy Hour (jointly with Education)

13 Dec 18:30 | **Townhall - TH35J** - Finding Your Place as an Early-Career Scientist Bridging Science and Society

We are looking for a new student/ECR rep! If you are interested in getting involved fill out the form here



Sara Turner
Early Career Rep



JJ Dong
Early Career Rep

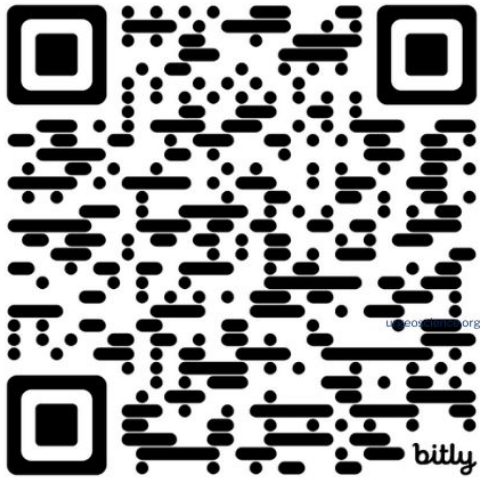


tinyurl.com/engageSY

Questions or ideas about Student & Early Career Activities for 2024?

Email Sara (turners425@gmail.com) or JJ Dong junjiedong@g.harvard.edu

Social Media and Website



Chris Hyun
*Social Media Coordinator
& Webmaster*

NEW! SY Instagram
@AGUSciSociety

**Join our Science & Society
online community**

Website: **bit.ly/AGUSciSociety**

Instagram: **@AGUSciSociety**

YouTube: **tinyurl.com/SY-YouTube**



SY Stickers & Prize - Catch 'em all at AGU23!



Learn how to find our free stickers & win a prize on Instagram @AGUSciSociety

Honors and Awards

- Awarded our second SY award, AGU's first Team Science Award!
- Revised the team award criteria and rubric to allow for more nominations
- Honored two more AGU Fellows with a SY affiliation
- Continues to honoring our amazing SY OSPA student winners



Margaret Hurwitz
Honors Coordinator



tinyurl.com/SY-Team-Award

Think about nominating your colleagues who do exceptional teamwork and research at the science-society interface for 2023 SY team award.

Congratulations to the USA National Phenology Network Team!!



We are excited to award the second ever Science and Society Team award to the USA National Phenology Network National Coordination Office

Learn more at:
<https://www.usanpn.org/usa-national-phenology-network>

Team Members Include:

- Theresa Crimmins, Director
- Erin Posthumus, Outreach Coordinator and US Fish & Wildlife Service Liaison
- Alyssa Rosemartin, Partner & Application Specialist
- Samantha Brewer, Volunteer Engagement Coordinator
- Ellen Denny, Monitoring Design & Data Coordinator;
- Jeff Switzer, Systems Analyst
- Nathan Acosta, Web Developer

AGU Fellows

Two AGU Fellows with
a SY affiliation.



Kristie L. Ebi
University of Washington

Congratulations
Kristie and Denise!



Denise L. Mauzerall
Princeton University

Congratulations 2022 Outstanding Student Presentation Awardees



Jacklynn Kay Beck
Ohio State University



Anna Lea Albright
*Laboratoire de Météorologie
Dynamique ENS*

Learn more about
about past awardees
here:

[connect.agu.org/
scienceandsociety/
about/
sy-member-spotlight](https://connect.agu.org/scienceandsociety/about/sy-member-spotlight)

Thank you, thank you, thank you!



Kathryn Semmens
Track Co-Lead



Ryan Meyer
Track Co-Lead



Margaret Hurwitz
Honors Coordinator

We have been so fortunate to have Kate, Ryan, and Maggie in SY leadership. And, while your terms on the Executive Committee are ending, we look forward to engaging you in new ways in 2024!

Get involved!

- Join our section
- Volunteer for committees and leadership positions for tracks and activities: tinyurl.com/engageSY
- Amplify each other at the Fall Meeting and beyond: social media, Eos articles, member spotlights
- Science for Society Team Award nominations

