



**2017-2018**

**GUIDEBOOK FOR SECTIONS  
AND FOCUS GROUPS**  
**March 2017**

# TABLE OF CONTENTS

## I. Sections and Focus Groups

- General Information
- Membership
- Section/Focus Group Officers (2017-2018)
- Roles and Responsibilities
  - Three Distinct Roles of Council
  - Leadership Criteria as Council members
  - Section/Focus Group President and President-elect
  - FM Program Committee Representatives
- Key Dates for Section/Focus Group Officers
- Key Contacts at AGU
- Committees
  - Council Committees
  - Section/Focus Group Committees
- Policies and Guidelines
  - Policies
    - Honors Program Policies
    - Organizational Support Policy
    - Scientific Integrity and Professional Ethics Policy
    - Incentive Program
    - Travel-Related Policies
  - Guidelines
    - Development: Sponsorship Process
    - Finance: Financial Reporting Timeline
    - Honors: Guidelines in Successful Nominations, Guidelines for New Union Honor Proposals, Guidelines for Section/Focus Group Award Proposals
    - Meetings: Standards for Session Proposals and Abstract Submissions
    - Section and Focus Group Programs: Fall Meeting Logistics, Guidelines for Newsletters/Announcements

## II. About the AGU

- Mission, Vision, Values
- Membership Profile and Demographics
- AGU Governance Structure/Roles
- Major Programs and Strategic Initiatives
  - Publications
  - Meetings
  - Honors
  - Student/Early Career Programs

## III. Appendices

- AGU Bylaws
- AGU Annual Reports

# **Sections and Focus Groups**

## SECTIONS AND FOCUS GROUPS

Sections and Focus Groups reflect the scientific breadth of the Union. These groups are responsible for fostering scientific discussion and collaboration among members who affiliate with them.

Sections and Focus Groups connect you with other scientists in your research area. Historically, Sections are disciplinary while Focus Groups are interdisciplinary. Sections and Focus Groups offer many opportunities to engage with AGU. Sections and Focus Groups play a role in identifying emerging issues, providing member input, and nominating scientists for honors and recognition.

The President and President-elect from each Section and Focus Group serve on the AGU Council. Listed below are AGU's Sections and Focus Groups:

Section/Focus Group Name	Acronym	Website
Atmospheric Sciences Section	AS	<a href="http://atmospheres.agu.org/">http://atmospheres.agu.org/</a>
Atmospheric and Space Electricity Focus Group	ASE	<a href="http://ase.agu.org/">http://ase.agu.org/</a>
Biogeosciences Section	B	<a href="http://biogeosciences.agu.org/">http://biogeosciences.agu.org/</a>
Cryosphere Focus Group	C	<a href="http://cryosphere.agu.org/">http://cryosphere.agu.org/</a>
Earth and Planetary Surface Processes Focus Group	EPSP	<a href="http://epsp.agu.org/">http://epsp.agu.org/</a>
Earth and Space Science Informatics Focus Group	ESSI	<a href="http://essi.agu.org/">http://essi.agu.org/</a>
Geodesy Section	G	<a href="http://geodesy.agu.org/">http://geodesy.agu.org/</a>
Geomagnetism, Paleomagnetism and Electromagnetism Section	GPE	<a href="http://geopaleoelectromagnetism.agu.org/">http://geopaleoelectromagnetism.agu.org/</a>
Global Environmental Change Focus Group	GEC	<a href="http://gec.agu.org/">http://gec.agu.org/</a>
Hydrology Section	H	<a href="http://hydrology.agu.org/">http://hydrology.agu.org/</a>
Mineral Rock Physics Focus Group	MRP	<a href="http://mrp.agu.org/">http://mrp.agu.org/</a>
Natural Hazards Focus Group	NH	<a href="http://nh.agu.org/">http://nh.agu.org/</a>
Near Surface Geophysics Focus Group	NS	<a href="http://nsg.agu.org/">http://nsg.agu.org/</a>
Nonlinear Geophysics Focus Group	NG	<a href="http://ng.agu.org/">http://ng.agu.org/</a>
Ocean Sciences Section	OS	<a href="http://oceans.agu.org/">http://oceans.agu.org/</a>
Paleoceanography and Paleoclimatology Focus Group	PP	<a href="http://paleo.agu.org/">http://paleo.agu.org/</a>
Planetary Sciences Section	PS	<a href="http://planets.agu.org/">http://planets.agu.org/</a>
Seismology Section	S	<a href="http://seismology.agu.org/">http://seismology.agu.org/</a>
Societal Impacts on Policy Sciences Focus Group	SIPS	<a href="http://sfg.agu.org/sips/">http://sfg.agu.org/sips/</a>
Space Physics and Aeronomy Section	SPA	<a href="http://spa.agu.org/">http://spa.agu.org/</a>
Study of the Earth's Deep Interior Focus Group	SEDI	<a href="http://sedi.agu.org/">http://sedi.agu.org/</a>
Tectonophysics Section	T	<a href="http://tectonophysics.agu.org/">http://tectonophysics.agu.org/</a>
Volcanology, Geochemistry and Petrology Section	VGP	<a href="http://vgp.agu.org/">http://vgp.agu.org/</a>

AGU STAFF CONTACT:

Phone: +1 202 777 7480; 202 777 7484

E-mail: [section@agu.org](mailto:section@agu.org)

## Section/Focus Group Membership (2015-2016)

Section or Focus Group Name	Primary Section or Focus Group	Secondary Section or Focus Group
<b>Atmospheric and Space Electricity</b>	<b>237</b>	<b>1135</b>
<b>Atmospheric and Space Electricity</b>	<b>237</b>	<b>1135</b>
<i>Regular</i>	183	816
<i>Student</i>	54	319
<b>Atmospheric Sciences</b>	<b>6144</b>	<b>20801</b>
<b>Aerosols and Clouds</b>	<b>632</b>	<b>3079</b>
<i>Regular</i>	461	2318
<i>Student</i>	171	761
<b>Atmospheric Sciences</b>	<b>3369</b>	<b>7526</b>
<i>Regular</i>	2691	5915
<i>Student</i>	678	1611
<b>Composition and Chemistry</b>	<b>666</b>	<b>2956</b>
<i>Regular</i>	533	2292
<i>Student</i>	133	664
<b>Physics, Dynamics, and Climate</b>	<b>1477</b>	<b>7240</b>
<i>Regular</i>	1088	5414
<i>Student</i>	389	1826
<b>Biogeosciences</b>	<b>2918</b>	<b>7458</b>
<b>Biogeosciences</b>	<b>2918</b>	<b>7458</b>
<i>Regular</i>	2209	5830
<i>Student</i>	709	1628
<b>Cryosphere Sciences</b>	<b>1127</b>	<b>3368</b>
<b>Cryosphere Sciences</b>	<b>1127</b>	<b>3368</b>
<i>Regular</i>	795	2535
<i>Student</i>	332	833
<b>Earth and Planetary Surface Processes</b>	<b>1542</b>	<b>7186</b>
<b>Earth and Planetary Surface Processes</b>	<b>1542</b>	<b>7186</b>
<i>Regular</i>	1027	4828
<i>Student</i>	515	2358
<b>Earth and Space Science Informatics</b>	<b>740</b>	<b>3473</b>
<b>Earth and Space Science Informatics</b>	<b>740</b>	<b>3473</b>
<i>Regular</i>	602	2548
<i>Student</i>	138	925
<b>Geodesy</b>	<b>824</b>	<b>2574</b>
<b>Geodesy</b>	<b>824</b>	<b>2574</b>
<i>Regular</i>	687	1947
<i>Student</i>	137	627

<b>Geomagnetism, Paleomagnetism and Electromagnetism</b>	<b>617</b>	<b>1900</b>
<b>Geomagnetism, Paleomagnetism and Electromagnetism</b>	<b>617</b>	<b>1900</b>
<i>Regular</i>	514	1425
<i>Student</i>	103	475
<b>Global Environmental Change</b>	<b>1656</b>	<b>10728</b>
<b>Global Environmental Change</b>	<b>1656</b>	<b>10728</b>
<i>Regular</i>	1246	7998
<i>Student</i>	410	2730
<b>Hydrology</b>	<b>5110</b>	<b>9901</b>
<b>Hydrology</b>	<b>5110</b>	<b>9901</b>
<i>Regular</i>	3627	7202
<i>Student</i>	1483	2699
<b>Mineral and Rock Physics</b>	<b>641</b>	<b>2771</b>
<b>Mineral and Rock Physics</b>	<b>641</b>	<b>2771</b>
<i>Regular</i>	448	1918
<i>Student</i>	193	853
<b>Natural Hazards</b>	<b>718</b>	<b>5487</b>
<b>Natural Hazards</b>	<b>718</b>	<b>5487</b>
<i>Regular</i>	535	4058
<i>Student</i>	183	1429
<b>Near Surface Geophysics</b>	<b>567</b>	<b>3078</b>
<b>Near Surface Geophysics</b>	<b>567</b>	<b>3078</b>
<i>Regular</i>	345	1955
<i>Student</i>	222	1123
<b>Nonlinear Geophysics</b>	<b>188</b>	<b>2278</b>
<b>Nonlinear Geophysics</b>	<b>188</b>	<b>2278</b>
<i>Regular</i>	146	1624
<i>Student</i>	42	654
<b>Ocean Sciences</b>	<b>4734</b>	<b>16831</b>
<b>Biological Oceanography</b>	<b>363</b>	<b>1839</b>
<i>Regular</i>	297	1386
<i>Student</i>	66	453
<b>Marine Geochemistry</b>	<b>385</b>	<b>2459</b>
<i>Regular</i>	272	1808
<i>Student</i>	113	651
<b>Marine Geology and Geophysics</b>	<b>834</b>	<b>3427</b>
<i>Regular</i>	631	2578
<i>Student</i>	203	849
<b>Ocean Sciences</b>	<b>1572</b>	<b>4923</b>
<i>Regular</i>	1334	3890
<i>Student</i>	238	1033
<b>Physical Oceanography</b>	<b>1580</b>	<b>4183</b>

Regular	1280	3256
Student	300	927
<b>Paleoceanography and Paleoclimatology</b>	<b>1350</b>	<b>4000</b>
<b>Paleoceanography and Paleoclimatology</b>	<b>1350</b>	<b>4000</b>
<i>Regular</i>	954	2963
<i>Student</i>	396	1037
<b>Planetary Sciences</b>	<b>1596</b>	<b>4924</b>
<b>Planetary Sciences</b>	<b>1596</b>	<b>4924</b>
<i>Regular</i>	1294	3706
<i>Student</i>	302	1218
<b>Seismology</b>	<b>2505</b>	<b>5207</b>
<b>Seismology</b>	<b>2505</b>	<b>5207</b>
<i>Regular</i>	1858	3837
<i>Student</i>	647	1370
<b>Societal Impacts and Policy Sciences</b>	<b>387</b>	<b>2602</b>
<b>Societal Impacts and Policy Sciences</b>	<b>387</b>	<b>2602</b>
<i>Regular</i>	308	1813
<i>Student</i>	79	789
<b>Space Physics and Aeronomy</b>	<b>2841</b>	<b>7985</b>
<b>Aeronomy</b>	<b>276</b>	<b>1248</b>
<i>Regular</i>	244	1051
<i>Student</i>	32	197
<b>Magnetospheric Physics</b>	<b>874</b>	<b>2127</b>
<i>Regular</i>	710	1689
<i>Student</i>	164	438
<b>Solar and Heliospheric Physics</b>	<b>855</b>	<b>2186</b>
<i>Regular</i>	730	1761
<i>Student</i>	125	425
<b>Space Physics and Aeronomy</b>	<b>836</b>	<b>2424</b>
<i>Regular</i>	692	1922
<i>Student</i>	144	502
<b>Study of the Earth's Deep Interior</b>	<b>314</b>	<b>2485</b>
<b>Study of the Earth's Deep Interior</b>	<b>314</b>	<b>2485</b>
<i>Regular</i>	204	1684
<i>Student</i>	110	801
<b>Tectonophysics</b>	<b>1946</b>	<b>5702</b>
<b>Tectonophysics</b>	<b>1946</b>	<b>5702</b>
<i>Regular</i>	1556	4554
<i>Student</i>	390	1148
<b>Volcanology, Geochemistry, and Petrology</b>	<b>2828</b>	<b>10121</b>
<b>Geochemistry</b>	<b>674</b>	<b>3306</b>
<i>Regular</i>	428	2230
<i>Student</i>	246	1076
<b>Volcanology, Geochemistry, and Petrology</b>	<b>1833</b>	<b>4458</b>

<i>Regular</i>	<i>1519</i>	<i>3511</i>
<i>Student</i>	<i>314</i>	<i>947</i>
<b>Volcanology/Petrology</b>	<b>321</b>	<b>2357</b>
<i>Regular</i>	<i>210</i>	<i>1664</i>
<i>Student</i>	<i>111</i>	<i>693</i>
<b>Grand Total</b>	<b>41530</b>	<b>141995</b>



## Section/Focus Group Membership (2014-2015)

Section or Focus Group Name	Primary Section or Focus Group	Secondary Section or Focus Group
<b>Atmospheric and Space Electricity</b>	<b>256</b>	<b>829</b>
Atmospheric and Space Electricity	256	829
Regular	186	590
Student	70	239
<b>Atmospheric Sciences</b>	<b>6128</b>	<b>21321</b>
Aerosols and Clouds	637	2150
Regular	481	1607
Student	156	543
Atmospheric Sciences	3445	12374
Regular	2704	9651
Student	741	2723
Composition and Chemistry	684	2291
Regular	545	1850
Student	139	441
Physics, Dynamics, and Climate	1362	4506
Regular	1048	3389
Student	314	1117
<b>Biogeosciences</b>	<b>2975</b>	<b>9398</b>
Biogeosciences	2975	9398
Regular	2262	7138
Student	713	2260
<b>Cryosphere Sciences</b>	<b>1084</b>	<b>3706</b>
Cryosphere Sciences	1084	3706
Regular	791	2689
Student	293	1017
<b>Earth and Planetary Surface Processes</b>	<b>1543</b>	<b>5529</b>
Earth and Planetary Surface Processes	1543	5529
Regular	1008	3647
Student	535	1882
<b>Earth and Space Science Informatics</b>	<b>696</b>	<b>2322</b>
Earth and Space Science Informatics	696	2322
Regular	568	1913
Student	128	409
<b>Geodesy</b>	<b>819</b>	<b>2852</b>
Geodesy	819	2852
Regular	683	2275

Student	136	577
<b>Geomagnetism, Paleomagnetism and Electromagnetism</b>	<b>648</b>	<b>2134</b>
<b>Geomagnetism, Paleomagnetism and Electromagnetism</b>	648	2134
Regular	539	1750
Student	109	384
<b>Global Environmental Change</b>	<b>1648</b>	<b>6071</b>
<b>Global Environmental Change</b>	1648	6071
Regular	1224	4528
Student	424	1543
<b>Hydrology</b>	<b>5233</b>	<b>15089</b>
<b>Hydrology</b>	5233	15089
Regular	3677	10359
Student	1556	4730
<b>Mineral and Rock Physics</b>	<b>609</b>	<b>2110</b>
<b>Mineral and Rock Physics</b>	609	2110
Regular	437	1554
Student	172	556
<b>Natural Hazards</b>	<b>714</b>	<b>2863</b>
<b>Natural Hazards</b>	714	2863
Regular	522	2126
Student	192	737
<b>Near Surface Geophysics</b>	<b>539</b>	<b>2041</b>
<b>Near Surface Geophysics</b>	539	2041
Regular	360	1331
Student	179	710
<b>Nonlinear Geophysics</b>	<b>183</b>	<b>693</b>
<b>Nonlinear Geophysics</b>	183	693
Regular	141	569
Student	42	124
<b>Ocean Sciences</b>	<b>4444</b>	<b>15612</b>
Biological Oceanography	353	1143
Regular	290	902
Student	63	241
Marine Geochemistry	369	1407
Regular	260	978
Student	109	429
Marine Geology and Geophysics	779	2998
Regular	597	2214
Student	182	784
Ocean Sciences	1510	5751
Regular	1292	4797
Student	218	954

Physical Oceanography	1433	4313
Regular	1192	3531
Student	241	782
<b>Paleoceanography and Paleoclimatology</b>	<b>1322</b>	<b>5168</b>
<b>Paleoceanography and Paleoclimatology</b>	1322	5168
Regular	931	3611
Student	391	1557
<b>Planetary Sciences</b>	<b>1606</b>	<b>5218</b>
<b>Planetary Sciences</b>	1606	5218
Regular	1324	4128
Student	282	1090
<b>Seismology</b>	<b>2445</b>	<b>8035</b>
<b>Seismology</b>	2445	8035
Regular	1828	5721
Student	617	2314
<b>Societal Impacts and Policy Sciences</b>	<b>347</b>	<b>1187</b>
<b>Societal Impacts and Policy Sciences</b>	347	1187
Regular	275	934
Student	72	253
<b>Space Physics and Aeronomy</b>	<b>2848</b>	<b>8698</b>
Aeronomy	289	964
Regular	262	874
Student	27	90
Magnetospheric Physics	856	2477
Regular	713	2073
Student	143	404
Solar and Heliospheric Physics	883	2130
Regular	745	1811
Student	138	319
Space Physics and Aeronomy	820	3127
Regular	682	2578
Student	138	549
<b>Study of the Earth's Deep Interior</b>	<b>336</b>	<b>1302</b>
<b>Study of the Earth's Deep Interior</b>	336	1302
Regular	213	821
Student	123	481
<b>Tectonophysics</b>	<b>2012</b>	<b>6792</b>
<b>Tectonophysics</b>	2012	6792
Regular	1577	5124
Student	435	1668
<b>Volcanology, Geochemistry, and Petrology</b>	<b>2952</b>	<b>10432</b>
Geochemistry	667	2475
Regular	417	1591

Student	250	884
Volcanology, Geochemistry, and Petrology	1958	6678
Regular	1607	5349
Student	351	1329
Volcanology/Petrology	327	1279
Regular	207	786
Student	120	493
<b>Grand Total</b>	<b>41387</b>	<b>139402</b>

## Section/Focus Group Officers (2017-2018)

SECTION/FOCUS GROUP CONTACT: [section@agu.org](mailto:section@agu.org)

Website: <http://sites.agu.org/leadership/sections-focus-groups/>

Section/Focus Group Name	Name and Position	Email Address
Atmospheric Sciences Section (AS)	Joyce Penner, President James Hurrell, President-elect V Faye McNeill, Secretary Shuyi S. Chen, Secretary	<a href="mailto:penner@umich.edu">penner@umich.edu</a> <a href="mailto:jhurrell@ucar.edu">jhurrell@ucar.edu</a> <a href="mailto:vfm2103@columbia.edu">vfm2103@columbia.edu</a> <a href="mailto:schen@rsmas.miami.edu">schen@rsmas.miami.edu</a>
Atmospheric and Space Electricity Focus Group (ASE)	Timothy J. Lang, President Maribeth Stolzenburg, President-elect Morris Cohen, Secretary	<a href="mailto:Timothy.j.lang@nasa.gov">Timothy.j.lang@nasa.gov</a> <a href="mailto:mstolzen@olemiss.edu">mstolzen@olemiss.edu</a> <a href="mailto:mcohen@gatech.edu">mcohen@gatech.edu</a>
Biogeosciences Section (B)	Ariel Anbar, President Elise Pendall, President-elect Laura Wasylenki	<a href="mailto:anbar@asu.edu">anbar@asu.edu</a> <a href="mailto:e.pendall@westernsydney.edu.au">e.pendall@westernsydney.edu.au</a> <a href="mailto:lauraw@indiana.edu">lauraw@indiana.edu</a>
Cryosphere Focus Group (C)	Tavi Murray, President Lora Koenig, President-elect Sinead Louise Farrell, Secretary	<a href="mailto:t.murray@swansea.ac.uk">t.murray@swansea.ac.uk</a> <a href="mailto:lora.koenig@colorado.edu">lora.koenig@colorado.edu</a> <a href="mailto:Sinead.farrell@noaa.gov">Sinead.farrell@noaa.gov</a>
Earth and Planetary Surface Processes Focus Group (EPSP)	William E. Dietrich, President Dorothy Merritts, President-elect Gregory Hancock, Secretary	<a href="mailto:bill@eps.berkeley.edu">bill@eps.berkeley.edu</a> <a href="mailto:Dorothy.merritts@fandm.edu">Dorothy.merritts@fandm.edu</a> <a href="mailto:gshanc@wm.edu">gshanc@wm.edu</a>
Earth and Space Science Informatics Focus Group (ESSI)	Ruth Duerr, President Denise J. Hills, President-elect Anne Wilson, Secretary	<a href="mailto:rduerr@nsidc.org">rduerr@nsidc.org</a> <a href="mailto:dhills@gsa.state.al.us">dhills@gsa.state.al.us</a> <a href="mailto:anne.wilson@lasp.colorado.edu">anne.wilson@lasp.colorado.edu</a>
Geodesy Section (G)	Susan Owen, President M. Meghan Miller, President-elect Brendan Crowell	<a href="mailto:Susan.owen@jpl.nasa.gov">Susan.owen@jpl.nasa.gov</a> <a href="mailto:meghan@unavco.org">meghan@unavco.org</a> <a href="mailto:crowellb@uw.edu">crowellb@uw.edu</a>
Geomagnetism, Paleomagnetism and Electromagnetism Section (GPE)	Laurie Brown, President Catherine Johnson, President-elect France Lagroix, Secretary	<a href="mailto:lbrown@geo.umass.edu">lbrown@geo.umass.edu</a> <a href="mailto:cjohnson@eos.ubc.ca">cjohnson@eos.ubc.ca</a> <a href="mailto:lagroix@ipgp.fr">lagroix@ipgp.fr</a>
Global Environmental Change Focus Group (GEC)	Ellen Mosley-Thompson, President Philip Mote, President-elect Ali H. Omar, Secretary	<a href="mailto:Thompson.4@osu.edu">Thompson.4@osu.edu</a> <a href="mailto:pmote@coas.oregonstate.edu">pmote@coas.oregonstate.edu</a> <a href="mailto:ali.h.omar@nasa.gov">ali.h.omar@nasa.gov</a>
Hydrology Section (H)	Jeff McDonnell, President Scott W. Tyler, President-elect Charles H. Luce, Secretary	<a href="mailto:Jeffrey.mcdonnell@usask.ca">Jeffrey.mcdonnell@usask.ca</a> <a href="mailto:styler@unr.edu">styler@unr.edu</a> <a href="mailto:cluce@fs.fed.us">cluce@fs.fed.us</a>
Mineral Rock Physics Focus Group (MRP)	Andrew Campbell, President Wenlu Zhu, President-elect Susannah Dorfman, Secretary	<a href="mailto:campbell@geosci.uchicago.edu">campbell@geosci.uchicago.edu</a> <a href="mailto:wzhu@umd.edu">wzhu@umd.edu</a> <a href="mailto:dorfman3@msu.edu">dorfman3@msu.edu</a>
Natural Hazards Focus Group (NH)	Ramesh P. Singh, President Seth Stein, President-elect Daniel Wright, Secretary	<a href="mailto:Ramesh.singh@sharda.ac.in">Ramesh.singh@sharda.ac.in</a> <a href="mailto:seth@earth.northwestern.edu">seth@earth.northwestern.edu</a> <a href="mailto:danielb.wright@gmail.com">danielb.wright@gmail.com</a>
Near Surface Geophysics Focus Group (NS)	Sarah Kruse, President Xavier Comas, President-elect Chi Zhang, Secretary	<a href="mailto:skruse@usf.edu">skruse@usf.edu</a> <a href="mailto:xcomas@fau.edu">xcomas@fau.edu</a> <a href="mailto:chizhang@ku.edu">chizhang@ku.edu</a>
Nonlinear Geophysics Focus Group (NG)	Annick Pouquet, President Sarah F. Tebbens, President-elect	<a href="mailto:pouquet@ucar.edu">pouquet@ucar.edu</a> <a href="mailto:sarah.tebbens@wright.edu">sarah.tebbens@wright.edu</a>

	Jorn Davidsen, Secretary	<a href="mailto:davidsen@phas.ucalgary.ca">davidsen@phas.ucalgary.ca</a>
Ocean Sciences Section (OS)	Eileen Hofmann, President Robert F. Anderson, President-elect Claudia Benitez-Nelson, Secretary Chuck Nittrouer, Secretary	<a href="mailto:hofmann@ccpo.odu.edu">hofmann@ccpo.odu.edu</a> <a href="mailto:boba@ldeo.columbia.edu">boba@ldeo.columbia.edu</a> <a href="mailto:cbnelson@geol.sc.edu">cbnelson@geol.sc.edu</a> <a href="mailto:nittroue@ocean.washington.edu">nittroue@ocean.washington.edu</a>
Paleoceanography and Paleoclimatology Focus Group (PP)	Figen Mekik, President Petra Dekens, President-elect Matthew E. Kirby, Secretary	<a href="mailto:mekikf@gvsu.edu">mekikf@gvsu.edu</a> <a href="mailto:dekens@sfsu.edu">dekens@sfsu.edu</a> <a href="mailto:mkirby@fullerton.edu">mkirby@fullerton.edu</a>
Planetary Sciences Section (PS)	Sarah Stewart, President Rosaly M. C. Lopes, President-elect Michael Mischna, Secretary	<a href="mailto:sts@ucdavis.edu">sts@ucdavis.edu</a> <a href="mailto:rosaly.m.lopes@jpl.nasa.gov">rosaly.m.lopes@jpl.nasa.gov</a> <a href="mailto:Michael.a.mischna@jpl.nasa.gov">Michael.a.mischna@jpl.nasa.gov</a>
Seismology Section (S)	Douglas Wiens, President Anne Sheehan, President-elect Eliza Richardson, Secretary	<a href="mailto:doug@wustl.edu">doug@wustl.edu</a> <a href="mailto:afs@cires.colorado.edu">afs@cires.colorado.edu</a> <a href="mailto:eur10@psu.edu">eur10@psu.edu</a>
Societal Impacts on Policy Sciences Focus Group (SIPS)	Linda Rowan, President Maggie Walser, President-elect Rebecca A. French, Secretary	<a href="mailto:rowan@unavo.org">rowan@unavo.org</a> <a href="mailto:mwalser@nas.edu">mwalser@nas.edu</a> <a href="mailto:French.rebecca@gmail.com">French.rebecca@gmail.com</a>
Space Physics and Aeronomy Section (SPA)	Larry Paxton, President Christina Cohen, President-elect Anthony Mannucci, Secretary Elizabeth MacDonald, Secretary	<a href="mailto:Larry.paxton@jhuapl.edu">Larry.paxton@jhuapl.edu</a> <a href="mailto:cohen@srl.caltech.edu">cohen@srl.caltech.edu</a> <a href="mailto:Anthony.j.mannucci@jpl.nasa.gov">Anthony.j.mannucci@jpl.nasa.gov</a> <a href="mailto:e.a.macdonald@nasa.gov">e.a.macdonald@nasa.gov</a>
Study of the Earth's Deep Interior Focus Group (SEDI)	Allen K. McNamara, President Scott D. King, President-elect Kanani K.M. Lee, Secretary	<a href="mailto:Allen.mcnamara@asu.edu">Allen.mcnamara@asu.edu</a> <a href="mailto:sdk@vt.edu">sdk@vt.edu</a> <a href="mailto:kanani.lee@yale.edu">kanani.lee@yale.edu</a>
Tectonophysics Section (T)	Ross S. Stein, President Julia K. Morgan, President-elect Jolante W. van Wijk, Secretary	<a href="mailto:rstein@usgs.gov">rstein@usgs.gov</a> <a href="mailto:morganj@rice.edu">morganj@rice.edu</a> <a href="mailto:jolante.vanwijk@nmt.edu">jolante.vanwijk@nmt.edu</a>
Volcanology, Geochemistry and Petrology Section (VGP)	William McDonough, President Michael Manga, President-elect Anat Shahar, Secretary Marie Edmonds, Secretary	<a href="mailto:mcdonough@umd.edu">mcdonough@umd.edu</a> <a href="mailto:manga@seismo.berkeley.edu">manga@seismo.berkeley.edu</a> <a href="mailto:ashahar@ciw.edu">ashahar@ciw.edu</a> <a href="mailto:me201@cam.ac.uk">me201@cam.ac.uk</a>

## Roles and Responsibilities

**Section and Focus Group Presidents and Presidents-Elect serve on the AGU Council during their terms.** In their role as AGU Council members, Section/Focus Group leaders work to advance the scientific direction of the Union as a whole. They bring a valuable perspective which, when taken collectively, represent the diversity of science that exists within the Union. The Council partners with the AGU Board and staff to shape and lead AGU and geophysical sciences into the future.

### *Three Distinct Roles of Council*

Under AGU's new governance structure, the Council was enlarged to include input from leaders representing a wider variety of members and charged with defining the role of the Council in advancing AGU's strategic plan.

The Board is responsible for the overall health of the organization and handles the business affairs of AGU. The Council is responsible for scientific affairs. As depicted in the governance structure diagram many functions are shared between the Board and Council since they cut across both organizational/business and science – meetings, outreach, publications, strategic planning, etc.

The Council plays three unique and critical roles: forming science policy, generating and deliberating science-related ideas, and advising on science and member issues. Examples of each of these roles are provided in three distinct roles diagram and in a sample Council agenda diagram.

### Three Distinct Roles of the Council

Policy Formation	Idea Generation / Science Deliberation	Advisor – Science and Member Issues
<ul style="list-style-type: none"><li>• <b>Policy – Honors and awards</b></li><li>• <b>Policy – Editor criteria and selection</b></li><li>• <b>Policy – Sections and Focus Groups</b></li><li>• <b>Policy – science organization (council structure; criteria for adding, evaluating, sunseting Sections and Focus Groups</b></li><li>• <b>Content of position statements</b></li></ul>	<ul style="list-style-type: none"><li>• <b>Grand challenge topics and process</b></li><li>• <b>Future of science and implications for AGU</b></li><li>• <b>Moving AGU towards interdisciplinary and transdisciplinary science</b></li><li>• <b>Advance member issues; identify trends impacting science</b></li><li>• <b>Journal titles and content</b></li><li>• <b>Meeting content and formats</b></li></ul>	<ul style="list-style-type: none"><li>• <b>Scientific content and its delivery</b></li><li>• <b>Providing advice for evolving meetings and publications – content, organization, format as science evolves</b></li><li>• <b>Raising member issues and concerns of potential changes impacting the Union work of Section and Focus Groups</b></li><li>• <b>Potential collaborators</b></li><li>• <b>Input on strategic planning / organizational policy, direction and goals</b></li><li>• <b>Creation, evaluation, sunseting of Union-wide awards and medals</b></li></ul>



## **Leadership Criteria for Council members**

The AGU Council helps advance AGU's strategic plan by:

1. Formulating science policy
2. Generating ideas for aligning and strengthening AGU activities as science evolves
3. Advising on science and member issues

Council members have dual roles: leading AGU as a whole and leading subsets of AGU (committees, focus groups, sections, student/early career members, etc.). These roles require that Council members dedicate themselves to being a conduit of information among AGU members. Equally, during Council discussions, Council members must be aware of their roles as leaders of AGU.

The following list of leadership criteria is intended to assist focus group/section leaders, committee/task force chairs, the Governance Committee, and the AGU President in identifying potential candidates for Council positions who can effectively fill dual roles. Identifying candidates who embody the following will help ensure an effective Council and help continue to advance the mission and vision of AGU.

- Active, engaged, and inquisitive
- Objective and impartial
- Familiar with AGU's strategic plan, governance model, culture, and ethics policy
- In tune with the AGU and Earth and space science community
- Good communicator (both presenting and listening)
- Open minded
- Well respected
- Team player
- Appreciates the dual roles of leader/representative of a discipline/committee/task force
- and leader of the entire AGU
- Values diversity
- Forward looking
- Willing to learn

## **Council Code of Conduct**

This code describes the conduct of individual Council members and the Council as a whole. The Council code of conduct is posted on the AGU website under Leadership: <http://sites.agu.org/leadership/science-council/council-code-of-conduct/>

## **Conflict of Interest Policy**

This conflict of interest policy covers all AGU volunteer and staff leaders, except those who serve on award selection committees

- [Conflict of Interest policy and process](#)
- [Conflict of Interest Form](#)



## ***Roles and Responsibilities: Section/Focus Group President and President-elect***

TERM: 2 years

### **PARTICIPATION & TIME COMMITMENT:**

- Attendance at, and participation in, Council meetings.
  - The Council meets electronically for 2 hours 3 times each year: Mid-June, Early September, Mid-November
  - The Council meets face-to-face 2 times each year: March and December (1 day) in conjunction with the Fall Meeting (San Francisco)
  - Full participation requires reading background material in advance and assisting with preparing agenda items as requested. Participation in discussions and collaborative documents

### **ROLES AND RESPONSIBILITIES:**

- Support direction of AGU and help engage members
  - Advance the vision, mission and strategic plan of AGU
  - Partner with the Governance Committee to fulfill AGU's commitment to exceptional governance.
  - Articulate, safeguard, model, and promote AGU's core values and principles.
  - Maintain awareness of emerging issues that could impact the science and AGU, especially issues facing the Section/Focus Group you lead.
  - Serve as a conduit of information between AGU leadership and Section/Focus Group members.
  - Ensure Section/Focus Group activities and structure supports AGU's mission, vision, core values, and strategic objectives.
  - Help mobilize and engage AGU members.
  - Bring a unique perspective, while keeping in mind your responsibility to act in the best interests of the organization, not any particular constituency or discipline.
- Build relationships internally and externally
  - Champion AGU and Earth and space sciences to all constituents and publics.
  - Ensure good interaction with other Section/Focus Groups, AGU committees, and other organizations.
  - Encourage others to get involved in volunteering at AGU.
  - Utilize staff expertise.
  - Get to know other Council members and key staff.
- Be an active member of the AGU Council
  - Prepare for, attend and actively participate in all Council meetings.
  - Be knowledgeable about the bylaws, policies, strategic plan, and governance responsibilities of the AGU Council.
  - Abide by the code of conduct.
  - Follow the conflict of interest policy and disclose any potential conflicts of interests.
  - Support ongoing science, outreach and development activities of the Union.
  - Function at a strategic, not tactical, level.
  - Be cognizant that the authority rests with the Council as a collective body, not to any one individual member.
  - Participate in Council orientation and be knowledgeable about effective governance.
  - Participate in periodic evaluation of the Council's performance and contribute to ongoing improvement of AGU governance.
  - Help prepare and lead Council agenda items as requested.

- Programmatic and operational responsibilities:
  - Chair and conduct the business of Section/Focus Group executive committee meetings
  - Appoint chairs and members of the various Section/Focus Group committees, i.e. executive committee members, Fellows and S/FG award selection committees, canvassing and nominating committees, etc.
  - Appoint/recommend individuals to serve on the Meeting Program Committees.
  - identify a member to serve as a member of the *Eos* Editorial Advisory Board for their Section. Term of each Editorial Advisory Board member are 2-3 years.
  - Arrange for the judging of OSPA papers at the Fall Meeting and other AGU meetings. This may be delegated to another Section/Focus Group officer or executive committee member.
  - Appoint or re-confirm the appointment of the Web Editor for your Section's Web presence.
  - Provide the budget for anticipated expenditures from Section/Focus Group fund and authorize payments from this fund. This budget is part of the overall Union budget and should be conveyed to headquarters by mid to late September.
  - Review quarterly financial statements forwarded by staff liaison.
  - Approve committee selection/recommendations for Section/Focus Group award/lecture recipients
  - Work with Section/Focus Group executive committee members or officers to propose new awards and lectures and forward to Honors and Recognition Committee for approval.
  - Provide input and recommendations to the committee appointment process for Honors committees.
  - Provide input/directions on meeting logistics related to Fall Meeting events preparation; i.e. finalizing receptions, meeting requirements, ticketed events, complimentary tickets and registrations, etc.

## ***Roles and Responsibilities: Fall Meeting Program Committee Representatives***

The Fall Meeting Program Committee representatives have the responsibility for developing and organizing the entire scientific program. **The Program Committee members**, under the direction of the Chair, Fall Meeting, **have final authority related to organizing the scientific program for their Section or Focus Group.**

Representatives will be essential in implementing strategies to achieve the AGU Board's objective of creating scientific meetings of the future and will develop a dynamic program for the 2017 Fall Meeting in New Orleans, Louisiana, the first Fall Meeting held outside of San Francisco in 49 years.

### **Appointments:**

The official Program Committee consists of a representative from each Section and Focus Group and the AGU Committees on Public Affairs and Education. The term of individual Program Committee representatives is generally three years, or determined in accordance with the Section's by-laws.

1. Section and Focus Group Presidents must submit the name of their **lead representative(s)** to AGU by **late December**; please submit the name of the representative(s) to [noliphant@agu.org](mailto:noliphant@agu.org) by this deadline.
2. Some Sections and Focus Groups receive a high number of abstracts submissions and as such, you may also elect to nominate additional representatives to serve on the Program Committee and assist in organizing disciplinary programs. Please also submit the names of any new or continuing committee members at this time.
3. Representatives may also utilize within their Section or Focus Group to support with session review
4. AGU reimburses expenses accordingly for program committee representatives.
  - a. One program committee representative per section or focus group to attend a planning meeting to approve session proposals. This meeting will be held in early May 2017.
  - b. A second meeting of the Program Committee after abstract submissions, the scheduling meeting, is held in September 2017. If needed, assistants (not official Program Committee Members) for the August scheduling period and the September Scheduling Meeting should be identified by the May planning meeting to include these individuals in all relevant AGU correspondences. AGU will pay expenses according for each section or focus group:
    - i. One person for up to 500 abstracts, two people for 500 to 800 abstracts, three people for 800 to 1200 abstracts, four people for 1200 to 1600 abstracts, five people for 1600 to 2000 abstract submissions.
4. If there is more than one Committee member nominated per Section or Focus Group, a **lead representative** must be identified. The lead representative is empowered to make final decisions on behalf of the Section or Focus Group on all scientific programming matters.

### **2017 Timeline:**

1. Program Committee kick-off conference call (TBD; early January)
2. Call for Session Proposals (15 February – 19 April)
3. Preplanning Meeting in Washington, DC: Session Proposal Acceptance (11-12 May)
4. Call for Abstracts Opening: (14 June)
5. Abstract Submission Deadline: (2 August)
6. Program Committee online session allocation (August 4-21)
7. Convener online scheduling (August 22-September 1)
8. Program Committee prepares preliminary layout of their section's program and resolves any Convener matters before the meeting (September 5)
9. Program Scheduling meeting at AGU Headquarters (September 6-8)

### Representative Requirements:

1. A strong and clear understanding of the structure of the Fall Meeting Scientific Program
2. **Commitment of up to 100 hours of volunteer time** outside of the two face-to-face committee meetings, is required for each yearly cycle depending on size of Section or Focus Group session proposal and abstract submissions. This includes being available during key scheduling and submission deadlines, such as:
  - Session proposal review and merging in April-May
  - Session allocation and scheduling in August-September
  - Provide direction, follow-up and resolve issues with Session Conveners throughout the year
3. Due to the time commitment required, it is recommended that the Program Committee representatives do not serve as an officer in their respective Sections or Focus Groups
4. Support and enforce all AGU and Fall Meeting scientific program policies and procedures
5. Thoroughly prepare for and review provided materials in advance of every program committee meeting or call to ensure time is devoted to improving the program or policies
6. Collaborate with all members of the Program Committee to create and implement opportunities across disciplines
7. Ability to complete all review and scheduling duties in an online session and abstract management system
8. Keep the Program Chair informed of any program and Section and Focus Group related decisions or concerns; keep Section and Focus groups informed of Program Committee policy decisions as appropriate
9. Attend two-day, face-to-face planning meeting in May 2017 in Washington, DC
10. Attend three-day, face-to-face scheduling meeting in September 2017 in Washington, DC
11. Participate in conference calls and provide feedback to AGU staff as needed
12. Adhere to all scientific program timelines and deadlines; respond to AGU staff, convener and author inquiries in a timely manner
13. Curate the SWIRL Theme sessions as needed
14. Assist in developing the AGU On-Demand (virtual) Program as needed

### Honoraria and Reimbursement:

Honoraria are provided to the **lead** Program Committee representative for each Section and Focus Group and the AGU Committees on Public Affairs and Education. The lead member determines how to allocate the honoraria.

### AGU Scientific Program Team (Updated online for most recent)

- **Nicole Oliphant**, Manager, Scientific Programs  
Phone: +1-202-777-7336 Email: [noliphant@agu.org](mailto:noliphant@agu.org)
- **Emily Cornell**, Program Assistant, Scientific Programs  
Phone: +1-202-777-7323 Email: [ecornell@agu.org](mailto:ecornell@agu.org)
- **Meetings Program Leadership**  
Lauren Parr, Director  
Phone: +1-202-777-7325; Email: [lparr@agu.org](mailto:lparr@agu.org)

## Key Dates for Section Officers (2017)

This table indicates the key dates for Section/Focus Group officers as it relates to organizational and program activities.

### 2017

Month	Date(s)	Activities
<b>December (2016)</b>	15 Dec	Submit names of committee members and FM program committee representatives to AGU staff liaison.
<b>January</b>	1 Jan	New officers and committees assume office
	1 Jan	Update Section/Focus Group webpages – officers, committee members, new program initiatives, key dates, calendars, others
	Early Jan	Fall Meeting Program Committee kick-off conference call
	15 Jan	AGU Honors nomination opens (Union medals, fellows, awards, prizes and Section/Focus Group awards and lectures)
<b>February</b>	Early Feb	Virtual Poster Showcase (VPS) abstract submission opens
	15 Feb	Call for Fall Meeting session proposals
	Late Feb	Orientation Training for Honors selection committees
	8 Mar	AGU Leadership Orientation in Washington, DC
<b>March</b>	Early Mar	Virtual Poster Showcase (VPS) abstract submission closes
	9-10 Mar	AGU Council Meeting in Washington, DC
	15 Mar	Union Honors (medals, fellows, awards, prizes) nomination deadline
	Early Apr	AGU and Union Fellows Committee Chair host a webinar with Section and Focus Group Committee Chairs to discuss deliberation process.
<b>April</b>	Early Apr	Release of year-end (2016) financial statements and 1Q 2017 financial statements
	15 Apr	Section/Focus Group awards and lectures nomination deadline
	17 Apr	Nomination materials are directed to Section and Focus Group Fellows committee based on 1) the nominee's primary affiliation and 2) up to three additional section and focus group affiliation may be reviewed as well if the initial pool of nominees does not meet primary evaluation criteria or if a low number of nominees were submitted for review.
	18 Apr-15 May	Section/Focus Group Fellows committees review and evaluation period
	1 May	Nomination materials are directed to their respective Union Medals, Awards, and Prizes committees for review.
<b>May</b>	1 May – 2 June	Section and Focus Group Award Committees review award/lecture nomination packages and complete initial evaluations.
	2 May – 19 June	Union medals, awards and prizes committees review and evaluation period
	11-12 May	FM pre-planning meeting in Washington, DC: Session proposal acceptance
	15 May	Section and Focus Group Fellows committees submit their recommendation reports for consideration by the Union Fellows Committee (UFC).
	9 June	Section/Focus Group award committee recommendations are due to AGU.
<b>June</b>	14 June	Call for FM Abstracts Opening
	15 June	Virtual Council meeting (11am – 1pm Eastern)
	15 June	Communication sent out on FM 2017 events planning and preparation

	16 June	Deadline for Section and Focus Group Presidents to approve Section and Focus Group award committee selections.
	19 June	Union medals, awards and prizes' committee recommendations due to AGU staff liaison(s).
	30 June	Official announcement of 2017 Section/Focus Group award and lecture recipients
	30 June	Deadline for S/FG leaders to submit function request forms through Attendee Interactive on FM events planning.
<b>July</b>	Early July	Council Leadership Team reviews Union Medals, Awards, and Prize committees' recommendations for final approval.
	Early July	Release of 2Q 2017 financial statements
	July	S/FG Leadership selects OSPA coordinators
	21 July	Official announcement of Union medals, awards and prizes recipients (date subject to change)
	6-7 July	Union Fellows Committee meet at AGU to elect 2017 class of fellows
	28 July	Official announcement of 2017 AGU Class of Fellows (date subject to change)
	2 Aug	FM Abstract Submission Deadline
<b>August</b>	1 Aug	OSPA coordinators finalized by S/FG leadership
	Early Aug	Virtual Poster Showcase (VPS) abstract submission opens
	4-21 Aug	FM program Committee online session allocation
	22-1 Sept	FM convener online scheduling
	5 Sept	FM program committee prepares preliminary layout of their section's program and resolves any convener matters before the meeting.
<b>September</b>	Early Sept	Virtual Poster Showcase (VPS) abstract submission closes
	6-8 Sept	FM Program scheduling meeting at AGU headquarters
	7 Sept	Virtual Council Meeting (11am -1pm Eastern)
<b>October</b>	Early Oct	Release of 3Q 2017 financial statements
	Late Oct	OSPA website launches for students
<b>November</b>	Early Nov	OSPA website launches for volunteers
<b>December</b>	4 Dec	Goal to have all OSPA judge slots filled
	10 Dec	AGU Council Meeting
	13 Dec	2017 Honors Ceremony and Banquet
	11-15 Dec	AGU Fall Meeting, New Orleans, Louisiana
	15-22 Dec	OSPA judges enter scores
	26-12 Jan	OSPA coordinators select winners
<b>January 2018</b>	19 Jan	OSPA winners announced

## Key Contacts at AGU

(See online for most recent updates to this list)

### AGU LEADERSHIP

AGU Staff/Leader Name	Contact Information	AGU Program/Activities
<b>Christine McEntee</b> , Executive Director/CEO	<a href="mailto:AGU_Execdirector@agu.org">AGU_Execdirector@agu.org</a>	
<b>Eric Davidson</b> , AGU President	<a href="mailto:President@agu.org">President@agu.org</a>	
<b>Robin Bell</b> , AGU President-elect	<a href="mailto:President-elect@agu.org">President-elect@agu.org</a>	
<b>Margaret Leinen</b> , AGU Past President	<a href="mailto:Pastpresident@agu.org">Pastpresident@agu.org</a>	

### ACCOUNTING/FINANCE

AGU Staff Name	Contact Information	AGU Program/Activities
<b>Mike Andrews</b> , Director of Finance	Phone: 202-777-7452; <a href="mailto:mandrews@agu.org">mandrews@agu.org</a>	Finance/Budgets
<b>Tiffany Faulkner</b> , Controller, Finance and Administration	<a href="mailto:tfaulkner@agu.org">tfaulkner@agu.org</a>	Finance/Accounting Operations

### DEVELOPMENT

AGU Staff Name	Contact Information	AGU Program/Activities
<b>Jeff Borchardt</b> , Director, Development	Phone: 202-777-7441; <a href="mailto:jborchardt@agu.org">jborchardt@agu.org</a>	Development/fund-raising
<b>Victoria Thompson</b> , Manager, Development	Phone: 202-777-7471; <a href="mailto:vthompson@agu.org">vthompson@agu.org</a>	Development/fund-raising; member donations

### GOVERNANCE

AGU Staff Name	Contact Information	AGU Program/Activities
<b>Cheryl Enderlein</b> , Assistant Director, Volunteer Leadership	Phone: 202-777-7502; <a href="mailto:cenderlein@agu.org">cenderlein@agu.org</a>	Board and Council Section/Focus Group Bylaws



### **HONORS PROGRAM and SECTIONS AND FOCUS GROUPS**

<b>AGU Staff Name</b>	<b>Contact Information</b>	<b>AGU Program/Activities</b>
<b>Billy Williams</b> , Director, Science	Phone: 202-777-7465; <a href="mailto:bwilliams@agu.org">bwilliams@agu.org</a>	Science Department Head
<b>Beth Paredes</b> , Assistant Director, Honors and Science Affiliations	Phone: 202-777-7500; <a href="mailto:eparedes@agu.org">eparedes@agu.org</a>	All Honors (Union Medals, Fellows, Awards, Prizes, Section and Focus group Honors) Section and Focus Group Staff Partner
<b>Leah Bland</b> , Program Specialist	Phone: 202-777-7389; <a href="mailto:lbland@agu.org">lbland@agu.org</a> <a href="mailto:Agu_unionhonors@agu.org">Agu_unionhonors@agu.org</a>	Union Awards, Medals and Prizes
<b>Antonio Covington</b> , Program Specialist	Phone: 202-777-7484 <a href="mailto:sections@agu.org">sections@agu.org</a> <a href="mailto:acovington@agu.org">acovington@agu.org</a>	Sections and Focus Group awards and lectures Section and Focus Group queries
<b>Chelsea Fuller</b> , Honors and Science Affiliations Coordinator	Phone: 202-777-7480 <a href="mailto:Unionfellows@agu.org">Unionfellows@agu.org</a> <a href="mailto:kthompson@agu.org">kthompson@agu.org</a>	Section and Focus Group queries Fellows E-marketing/newsletters

### **MARKETING, COMMUNICATIONS AND ENGAGEMENT**

<b>AGU Staff Name</b>	<b>Contact Information</b>	<b>AGU Program/Activities</b>
<b>Dana Rehm</b> , Director, Marketing, Communications and Engagement <b>Joan Buhrman</b> , Assistant Director, Strategic Communications and Marketing	Phone: 202-777-7436; <a href="mailto:drehm@agu.org">drehm@agu.org</a>  Phone: 202-777-7509, <a href="mailto:jbuhrman@agu.org">jbuhrman@agu.org</a>	All AGU marketing, communications and engagement activities

### **MEETINGS**

<b>AGU Staff Name</b>	<b>Contact Information</b>	<b>AGU Program/Activities</b>
<b>Lauren Parr</b> , Director, Meetings	<a href="mailto:lparr@agu.org">lparr@agu.org</a>	
<b>General Meeting Questions</b>	<a href="mailto:Meetinginfo@agu.org">Meetinginfo@agu.org</a>	
<b>Meeting Housing/Hotel Questions</b>	<a href="mailto:housing@agu.org">housing@agu.org</a>	
<b>Meeting Registration</b>	<a href="mailto:registration@agu.org">registration@agu.org</a>	
<b>Nicole Oliphant</b> , Manager, Scientific Programs	Phone: 202-777-7336; <a href="mailto:noliphant@agu.org">noliphant@agu.org</a>	Scientific programs; i.e. abstract submissions



## **PUBLIC AFFAIRS**

<b>AGU Staff Name</b>	<b>Contact Information</b>	<b>AGU Program/Activities</b>
Alexandra Shultz, Public Affairs Director	Phone: 202-777-7505 <a href="mailto:ashultz@agu.org">ashultz@agu.org</a>	Science Policy/Public Affairs
Elizabeth Landau, Public Affairs Manager	Phone: 202-777-7535 <a href="mailto:elandau@agu.org">elandau@agu.org</a>	

## **PUBLICATIONS**

<b>AGU Staff Name</b>	<b>Contact Information</b>	<b>AGU Program/Activities</b>
<b>Brooks Hanson</b> , Director, Publications	Phone: 202-777-7520; <a href="mailto:bhanson@agu.org">bhanson@agu.org</a>	All AGU publications
<b>Jeanette Panning</b> , Assistant Director, Publications Program	Phone: 202-777-7382, <a href="mailto:jpanning@agu.org">jpanning@agu.org</a>	
<b>Jenny Lunn</b> , Assistant Director, Content & Analysis, Publications	Phone: 202-777-7346, <a href="mailto:jlunn@agu.org">jlunn@agu.org</a>	

## **SCIENTIFIC ETHICS**

<b>AGU Staff Name</b>	<b>Contact Information</b>	<b>AGU Program/Activities</b>
<b>Billy Williams</b> , Director, Science <b>Randy Townsend</b> , Senior Journal Program Manager	<a href="mailto:ethics@agu.org">ethics@agu.org</a>	Scientific Ethics

## **TALENT POOL PROGRAMS**

<b>AGU Staff Name</b>	<b>Contact Information</b>	<b>AGU Program/Activities</b>
<b>David Harwell</b> , Assistant Director, Talent Pool	Phone: 202-777-7345; <a href="mailto:dhawell@agu.org">dhawell@agu.org</a>	Talent Pool programs (student, education, career programs)
<b>Pranoti Asher</b> , Manager, Education	Phone: 202-777-7522, <a href="mailto:pasher@agu.org">pasher@agu.org</a>	Education, VPS, mentoring, faculty and teacher professional development programs
<b>Erik Hankin</b> , Program Manager, Student Programs <b>Nathaniel Janick</b> , Career Services Coordinator <b>Leslie Marasco</b> , OSPA Programs Coordinator	Phone: 202-777-7523, <a href="mailto:ehankin@agu.org">ehankin@agu.org</a> Phone: 202-777-7508, <a href="mailto:njanick@agu.org">njanick@agu.org</a> Phone: 202-777-7357, <a href="mailto:lmarasco@agu.org">lmarasco@agu.org</a> Students and Early Career Programs: <a href="mailto:students@agu.org">students@agu.org</a> ; <a href="mailto:ospa@agu.org">ospa@agu.org</a>	Students and Career Programs

**THRIVING EARTH EXCHANGE**

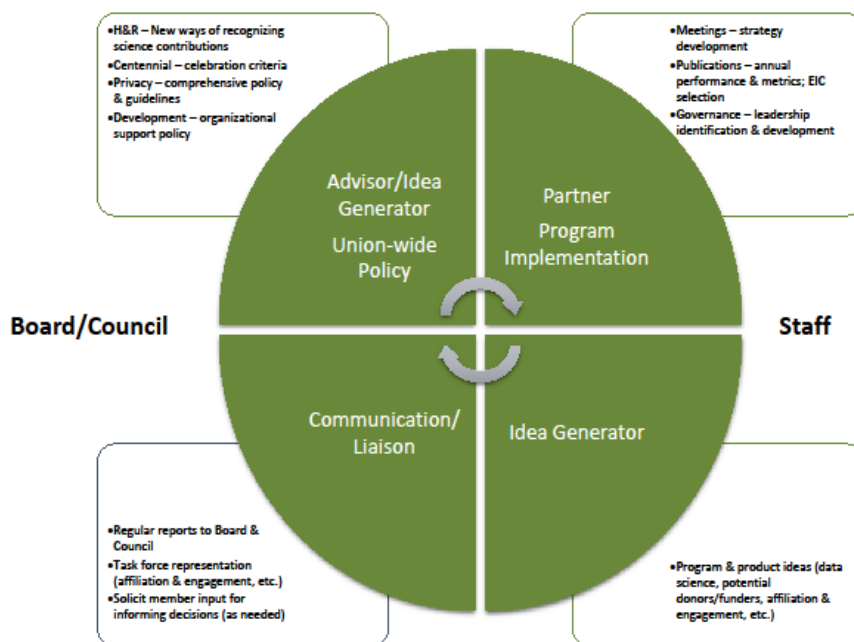
AGU Staff Name	Contact Information	AGU Program/Activities
<b>Raj Pandya</b> , Program Director, TEX Science <b>Natasha Udu-gama</b> , Program Manager, TEX <b>Melissa Goodwin</b> , Project Liaison, TEX	Phone: 202-777-7514; <a href="mailto:rpandya@agu.org">rpandya@agu.org</a> Phone: 202-777-7304, <a href="mailto:nudugama@agu.org">nudugama@agu.org</a> Phone: 202-777-7313, <a href="mailto:mgoodwin@agu.org">mgoodwin@agu.org</a>	Thriving Earth Exchange (TEX)

# Committees

Hundreds of AGU members volunteer their time and expertise by serving on committees and task forces. These committees/task forces work together with the Board, Council and staff to advance AGU's strategic plan. Examples of how this works are provided in the Roles Committee Play.

## Roles Committees/Task Forces Play @ AGU

working with the Board/Council and staff



**AGU LEADER**

The AGU President works with other volunteer and staff leaders to: develop charges that align with the strategic plan, support upcoming initiatives, appoint chairs, and recruit people with a wide range of perspectives. All committees/task forces provide reports to the Board and Council twice a year.

Associations are built on a system of committee actions, linking the association with the attitudes, expectations and needs in the real world of its members. Committees represent, involve, and serve members. They also provide an important training ground for future leaders. Committees are an effective workforce for the association – they ensure group participation in problem solving and provide a critical forum for the many interests within the association.

***Effective committees unify, represent, motivate, coordinate, consolidate and communicate. They function best when their members are selected appropriately and they have clearly defined mission, strong leadership, and competent staffing.***

## Council Committees

The **Council** is responsible for the scientific affairs of AGU and plays **three distinct roles**: forming science policy, generating and deliberating science-related ideas, and advising on science and member issues. The Council works together with the Board, committees/task forces/volunteers, and staff to advance AGU's strategic plan.

The following committees work on behalf of the Council. All committees/task forces provide reports to the Board and Council twice a year.

### 2017-2018 Committees that report to Council:

- Council Leadership Team, chaired by the AGU President-elect
- Honors & Recognition, chair serves as Council member

### 2017-2018 Committees that report to the Honors and Recognition Committee:

#### **COMMITTEE CHARGE**

The committee maintains oversight of the Union's honors and recognition programs at all levels – Union-wide (medals, fellows, awards, and prizes) and Sections and Focus Group. It conducts, on a regular basis, a periodic review of the program, which includes providing recommendations on improving nomination and selection policies and procedures, upgrading operational policies, reviewing the objectives of the medals, awards, prize and fellowship to make sure that the program elements are well defined. It makes sure that Sections and Focus Group honors are current, appropriate and balanced. It is charged with reviewing proposals for new recognitions and recommends new recognition opportunities. It creates a community through ritual and celebration ensuring that the Honors Ceremony and related activities are maximally effective to leverage and enhance the external visibility and achievements of the scientist, the science and AGU.

- Union Fellows Committee, chair serves as Honors and Recognition Committee member
- College of Fellows Task Force
- Union Award Selection Committees
- Union Medal Selection Committees
- Union Prize Selection Committees

## Section/Focus Group Committees

*(All committees are hyperlinked to the committee rosters in the website)*

- Atmospheric Space and Electricity
  - [Executive Committee](#)
  - [Fellows Committee](#)
  - [Franklin Lecture Committee](#)
- Atmospheric Sciences
  - [Executive Committee](#)
  - [Fellows Committee](#)
  - [Atmospheric Sciences Ascent Award Committee](#)
  - [James R. Holton Junior Scientist Award Committee](#)
  - [Yoram J. Kaufman Unselfish Cooperation in Research Award Committee](#)
- Biogeosciences
  - [Executive Committee](#)
  - [Fellows Committee](#)
  - [Sulzman Award Committee](#)
  - [Carl Sagan Lecture Committee](#)
  - [Reeburgh Lecture Committee](#)
- Cryosphere Sciences
  - [Executive Committee](#)
  - [Fellows Committee](#)
  - [Cryosphere Early Career Award Committee](#)
  - [Nye Lecture Committee](#)
- Earth and Planetary Surface Processes
  - [Executive Committee](#)
  - [Fellows Committee](#)
  - [G.K. Gilbert Award in Surface Processes Committee](#)
  - [Leopold Young Scientist Award Committee](#)
  - [Sharp Lecture Committee](#)
- Earth and Space Science Informatics
  - [Executive Committee](#)
  - [Fellows Committee](#)
  - [Leptoukh Lecture Committee](#)
- Geodesy
  - [Executive Committee](#)
  - [Fellows Committee](#)
  - [Geodesy Section Award Committee](#)
  - [Ivan Mueller Award Committee](#)
  - [Paul Silver Award Committee](#)

- William Bowie Lecture Committee
- Geomagnetism, Paleomagnetism and Electromagnetism
  - Executive Committee
  - Fellows Committee
  - William Gilbert Award Committee
  - Bullard Lecture Committee
- Global Environmental Change
  - Executive Committee
  - Fellows Committee
  - Bert Bolin GEC Award Committee
  - GEC Early Career Award Committee
  - Piers J. Sellers GEC Middle Career Award Committee
  - Bert Bolin Lecture Committee
  - Schneider Lecture Committee
  - Tyndall Lecture Committee
- Hydrology
  - Executive Committee
  - Fellows Committee
  - Hydrologic Sciences Award Committee
  - Hydrologic Sciences Early Career Award Committee
  - Langbein Lecture Committee
  - Withespoon Lecture Committee
  - Horton Research Grant Committee
  - Ad Hoc Committee on Nominations
  - OSPA Committee
  - Fall Meeting Committee
  - Technical Committees
    - Biogeosciences/Hydrology-Soil Systems and Critical Zones Processes
    - Hydrogeophysics
    - Large Scale Field Experimentation
    - Remote Sensing
    - Ground Water
    - Ecohydrology
    - Hydrology/SIPS-Water and Society
    - Hydrological Uncertainty
    - Precipitation
    - Surface Water
    - Unsaturated Zone
    - Water Quality
- Mineral and Rock Physics
  - Executive Committee
  - Fellows Committee
  - Jamieson Student Paper Award Committee
  - MRP Early Career Award Committee

- MRP Graduate Research Award Committee
- Natural Hazards
  - Executive Committee
  - Fellows Committee
  - NH Focus Group Award for Graduate Research Committee
  - Gilbert White Lecture Committee
- Near Surface Geophysics
  - Executive Committee
  - Fellows Committee
- Nonlinear Geophysics
  - Executive Committee
  - Fellows Committee
  - Turcotte Award Committee
  - Space Weather and Nonlinear Waves and Processes Prize Committee
  - Lorenz Lecture Committee
- Ocean Sciences
  - Executive Committee
  - Fellows Committee
  - Ocean Sciences Award Committee
  - Ocean Sciences Early Career Award Committee
  - Ocean Sciences Voyager Award Committee
  - Emiliani Lecture Committee
  - Sverdrup Lecture Committee
  - Carson Lecture Committee
  - Reeburgh Lecture Committee
- Paleooceanography and Paleoclimatology
  - Executive Committee
  - Fellows Committee
  - Dansgaard Award Committee
  - Emiliani Lecture Committee
- Planetary Sciences
  - Executive Committee
  - Fellows Committee
  - Whipple Award/Lecture Committee
  - Greeley Early Career Award Committee
  - Sagan Lecture Committee
  - Shoemaker Lecture Committee
- Seismology
  - Executive Committee
  - Fellows Committee

- Aki Young Scientist Award Committee
  - Paul G. Silver Award Committee
  - Gutenberg Lecture Committee
- Societal Impacts and Policy Sciences
  - Executive Office
- Space Physics and Aeronomy
  - Executive Committee
  - Fellows Committee
  - Space Weather and Nonlinear Waves and Processes Prize Committee
  - Basu U.S. Early Career Award Committee
  - Fred L. Scarf Award Committee
  - Space Physics and Aeronomy Richard Carrington Education and Public Outreach (SPARC) Award Committee
  - Sunanda and Satimay Basu (International) Early Career Award Committee
- Study of the Earth's Deep Interior
  - Executive Committee
  - Fellows Committee
  - SEDI Focus Group Graduate Research Award Committee
- Tectonophysics
  - Executive Committee
  - Fellows Committee
  - Jason Morgan Early Career Award Committee
  - Paul G. Silver Award Committee
  - Francis Birch Lecture Committee
- VGP
  - Executive Committee
  - Fellows Committee
  - Hisashi Kuno Award Committee
  - Norman L. Bowen Award / Lecture Committee
  - Reginald Daly Lecture



# Policies and Guidelines

---

## Program Policies

### HONORS PROGRAM POLICIES

- AGU's Conflict of Interest Policy for the Honors program can be found [here](#).
- AGU's Naming Policy for Union Honors can be found [here](#).
- **Discontinuation of the Holdover Policy for Union medals, awards and prize nominations**
  - Starting in January 2015, AGU honors will not allow any holdovers to be carried over for the following award cycle. All unsuccessful nominations will have to be resubmitted in the Fluid Review system. This new online system allows the committee to give specific feedback to nominators on how to improve their nomination packages.
  - For Section/Focus Group awards and lectures, nominations can be held over for no more than one year after the original date of submission. A holdover nomination is one that is competitive and can be carried over to the next award cycle without any updates. However, the Honors and Recognition Committee recommend that updates are made.
- **Co-Nominator/Co-Supporter Policy:** In addition to a nominator, a nomination package can only have one co-nominator and three supporters.
- **Posthumous Policy:** Posthumous nominations are not allowed, but will be considered if the nomination was submitted when the nominee was still alive.
- **Multiple Nominations for a Single Candidate:** Two or more nominations for a single candidate for a given award will NOT be considered. If separate packages are received, the nominators will be asked to combine them.

### ORGANIZATIONAL SUPPORT POLICY FOR SECTIONS AND FOCUS GROUPS

The American Geophysical Union pursues traditional sponsorship of Section and Focus Group social events at meetings as a means of generating non-dues and non-registration revenue to help support priority initiatives. AGU offers sponsorships and support of a Section and/or Focus Group when the sponsorship does not interfere with the mission of AGU or the objectives of the social event.

Sponsorship of a Section or Focus Group social event does not constitute an endorsement of or by the Section or Focus Group.

Section and Focus Group social event sponsorship are managed as part of AGU's overall **Organizational Support Policy**.

### SCIENTIFIC INTEGRITY AND PROFESSIONAL ETHICS POLICY

The mission of the American Geophysical Union (AGU) is to promote discovery in Earth and space sciences for the benefit of humanity. A core value of AGU is "excellence and integrity in everything we do." AGU envisions its future to include being respected and known as an authoritative and reliable source of high-quality

Earth and space science information and as a model of excellence, diversity, integrity, and equality that attracts and retains the best scientists and students in its membership.

To this end, AGU has established a set of guidelines for scientific integrity and professional ethics for the actions of the members and the governance of the union in its internal activities; in its public persona; and most importantly, in the research and peer review processes of its scientific publications, its communications and outreach, and its scientific meetings. AGU is committed to uphold the highest level of scientific integrity and professional ethics in all of its activities in order to preserve and enhance its position as a global authority in the scientific community.

In developing this policy, AGU has utilized extensively a number of reports by various U.S. government agencies, the National Academy of Sciences, and other scientific and professional societies. These references are footnoted as appropriate.

Key aspects of the AGU Scientific Code of Conduct and Professional Ethics include the following:

- A.** The membership will conduct themselves according to the highest professional and ethical standard in professional activities, scientific research, communications, and public engagement in order to preserve the integrity of science and the public trust.
- B.** Scientific research, and the preparation of the results, must be free of any impropriety or undisclosed conflicts of interest. Intentional plagiarism, fabrication, or falsification are serious examples of scientific misconduct and as such are inappropriate actions that will discredit the union and compromise the integrity of science.
- C.** The peer review process must strive to be fair, unbiased, and committed to upholding the scientific excellence of research.
- D.** An investigation of any alleged violation of these principles or code shall be conducted in the event of credible accusations to ensure that the scientific community and public continue to regard AGU as ethical, authoritative, objective, and professional.
- E.** It is the responsibility of each member of the union to uphold the standards of scientific conduct and to report allegations of unethical scientific practice to the AGU Ethics Committee.

## SCIENTIFIC INTEGRITY AND PROFESSIONAL ETHICS

### SECTION AND FOCUS GROUP INCENTIVE PROGRAM

In 2015, AGU piloted a donor incentive program that provides unrestricted funding to Sections or Focus Groups based on the number of qualified individual donations to any AGU fund by the group's primarily affiliated members.

A contribution of \$50 or greater is required to qualify as an individual donor. This contribution can be allocated to any AGU fund, not just Section or Focus Group funds. Funds from employer matching-gift programs will be credited toward the individual donor/employee.

Due to Sections and Focus Groups' varying membership sizes, the incentive program will be based on the rate of participation by members primarily affiliated with each group as of 31 December 2016, not the total number of participating members.

The program's financial incentives are as follows:

- 5% participation from primary affiliated members – \$1,000 contribution from AGU to your Section or Focus Group
- 7% participation primary affiliated members – \$2,000 contribution from AGU to your Section or Focus Group
- 10% participation primary affiliated members – \$3,000 contribution from AGU to your Section or Focus Group
- 12% participation primary affiliated members – \$4,000 contribution from AGU to your Section or Focus Group
- 15% or greater participation primary affiliated members – \$5,000 contribution from AGU to your Section or Focus Group

### **TRAVEL RELATED POLICIES**

AGU limits reimbursement for travel and other costs to those that are ordinary and necessary in the conduct of Union activities. This form is required of all persons requesting reimbursement of expenses from the AGU. Claims must be submitted within 90 day. Submissions beyond 90 days are at the discretion of AGU.

1. Receipts – **Original receipts should be submitted for all expenses.** Original receipts must be submitted for expenses \$25 USD or greater. AGU reserves the right not to reimburse expenses that are not documented with original receipts. Should AGU reimburse undocumented expenses, that portion of the reimbursement may be taxable to the recipient. A 1099 may be sent at the end of the calendar year if the total taxable amount exceeds \$600.
2. Air and Train Travel – Fees should not exceed readily available economy class rates. Travelers are strongly encouraged to use book at least three weeks in advance whenever possible. Travel at rates in excess of economy fares will be disallowed unless authorized in advance by a Director level AGU employee or above. Preapproval documentation should be submitted with the reimbursement request. If travel must be combined with non-AGU related, AGU will reimburse only the cost of travel associated with AGU. Separate documentation of the AGU portion of the trip should also be submitted for comparison purposes.
3. Ground Transportation - Expenses for transportation by rental car, taxi cabs, bus, and subway will be reimbursed at cost. Privately owned vehicles which will be reimbursed at the corresponding IRS mileage rate, plus any toll charges and necessary parking fees, provided the cost of travel by private vehicle does not exceed the cost of travel by common carrier. **The 2016 IRS mileage rate is \$.535 per mile.** Private vehicle travel reimbursement must include a distance calculation from a legitimate source such as **Map Quest, Expedia, Google Maps, etc.** as documentation.
4. Meals - Reimbursement of meal costs is on an actual expense basis, with daily amounts limited to the IRS daily per diem rate for the area of travel, at the time of travel. IRS per diem rates apply **ONLY** to the daily limit of reimbursement - **original receipts must be submitted in order to receive reimbursement.** Meals exceeding the daily limits are reimbursable at the discretion of AGU. IRS per diem rates can be found at <http://www.irs.gov/pub/irs-pdf/p1542.pdf>. Expenses covering more than one person should be documented with the names of each individual covered on the receipt.
5. Lodging should be obtained in standard, single rooms wherever possible. Reasonable lodging costs for the period of travel are reimbursable when supported by a detailed hotel receipt. Hotel movies are not

reimbursable. Room service and eating from the mini-refrigerator is discouraged because of the inflated prices associated with those services.

6. Travelers are discouraged from submitting alcohol expenses unless specifically related to an organized AGU function. Additionally, AGU does not reimburse personal items such as toiletries, doctor invoices, ATM fees, medicine, and travel insurance.
7. Foreign Travel: When traveling outside the United States and Canada, AGU will reimburse actual expenses, limited to the US Department of State daily per diem rate for the area of travel, at the time of travel. Per diem rates apply ONLY to the daily limit of reimbursement - original receipts must be submitted in order to receive reimbursement. Meals exceeding the daily limits are reimbursable at the discretion of AGU. International per diem rates can be found at [http://aoprals.state.gov/web920/per\\_diem\\_action.asp?MenuHide=1&CountryCode=0000](http://aoprals.state.gov/web920/per_diem_action.asp?MenuHide=1&CountryCode=0000).

Documentation of the currency conversion rate for the dates of travel must accompany the reimbursement request.

# Program Guidelines

## DEVELOPMENT

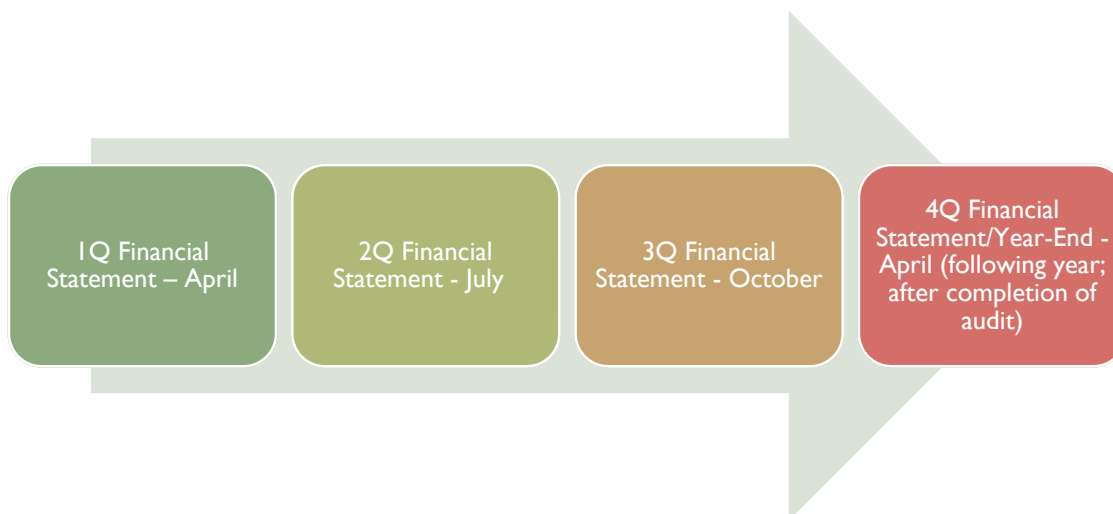
### - SECTION AND FOCUS GROUP SPONSORSHIP PROCESS

AGU pursues traditional sponsorship for Section and Focus Group social events as a means of generating additional revenues to help support S/FG priority initiatives. AGU offers sponsorships when the sponsorship does not interfere with the mission of AGU or the objectives the S/FG event.

- AGU will identify potential sponsors through conversations with Section/Focus Group leaders
- AGU and/or Section/Focus Group leaders will cultivate and solicit support
- AGU Development staff facilitates the details of sponsorship packages and benefits
- Upon confirmation of sponsorship, AGU will notify Section/Focus Group leaders
- AGU Development staff will lead coordination in the execution of all affiliated sponsorship deliverables and recognition placements

## FINANCE

### - FINANCIAL REPORTING TIMELINE



## HONORS

- [GUIDELINES ON SUCCESSFUL NOMINATIONS](#)
- [GUIDELINES FOR NEW UNION HONORS PROPOSALS](#)
- [GUIDELINES FOR NEW SFG AWARD PROPOSALS](#)

## MEETINGS

### - STANDARDS FOR SESSION PROPOSALS AND ABSTRACT SUBMISSIONS FOR AGU MEETINGS

**Note:** Guidelines may vary if AGU is cosponsoring a meeting with other societies. Specific guidelines for each meeting are posted on their respective Web sites.

### *High-Level Guidelines:*

1. Session proposals and abstract submission descriptions must include a concise definition of the scientific topic.
2. Session proposals must include a description of why the topic is relevant and timely.
3. Session proposals must be based on scientific value; thus, celebratory or memorial sessions will not be considered for AGU meetings.
4. Session proposals and abstracts must focus on scientific results and/or their applications.
5. Session proposals and abstracts that are deemed to be primarily advertisements of commercial products and services will not be considered for AGU meetings.
6. All conveners and authors listed on session proposals or abstracts must consent to being named as part of the proposal or abstract at submission time.

## **SECTION/FOCUS GROUP PROGRAM**

### **- FALL MEETING EVENTS LOGISTICS**

Sections and Focus Groups (and technical committees) have the option of scheduling two types of events at the AGU Fall Meeting: an Executive Committee Meeting and a Social Event/Business Meeting. Planning for these events starts around the July/August timeframe. The following provides guidelines on important tasks and components of the planning involved to make these events and meetings successful.

- Sections and Focus Group leaders are provided with an online form to complete in order to confirm arrangements and logistics for these events. The online form needs to be completed and submitted to AGU staff in a timely manner. This form will require them to fill out the following information:
  - o Contact person and information for these events: email address, phone number of contact person on site
  - o First and second choices for dates/times for their S/FG Executive Committee meetings.
  - o Official name of their social event/function: The name of the event should be exactly as it should appear in the final meeting materials. To ensure clarity in all published materials, no abbreviations will be accepted.
  - o There are several options for Section/Focus Group's social event: reception, luncheon, or dinner. S/FGs are allowed to only select one option. AGU will only subsidize one social event for each Section/Focus Group, and will subsidize \$50/person toward this event.
    - Enhanced Reception: Beer and food at a conference hotel.
    - Ticketed Luncheon: Held at a conference hotel (AGU will subsidize \$50 towards the cost of the luncheon; the luncheon will be tailored to target \$50 per person)
    - Ticketed Event: Held offsite at a local restaurant/bar – limited availability. (AGU will subsidize \$50 per person for the cost of the off-site event. Additional cost absorbed by S/FG)
      - S/FG leaders will be asked for the number of tickets for these events and the ticket prices for both regular and student members. Please note that the total number of tickets/attendees for the event will depend on the capacity of the offsite venue, and the budgeted amount set for the year.
      - They will provide confirmation on the names and number of complimentary tickets to be set aside for their VIPs, honorees, etc, and these names will be assigned promo codes in the system.

- When meeting registration opens, and tickets are open for purchase, AGU staff will keep a running record of the ticket sales progress, and communicate this regularly to the S/FG leaders.
- AGU staff will communicate all the logistics and details to the S/FG leaders for confirmation and final arrangements, leading to the deadline for final guarantees. Final arrangements will include menus, pricing, food and beverage requirements (open bar, cash bar, full bar, etc.), or additional enhancements/appetizers.
- Since AGU will subsidize only one social event at \$50/attendees, additional costs exceeding the subsidy amount will be charged to Section/Focus Group funds and/or sponsorships.
  - Sponsorships for all events must be confirmed through the AGU Development team. Any sponsorship pledges secured by members of the Section/Focus Groups that are not communicated through AGU by a certain date are subject to having requested enhancements canceled.
- Audio-Visual Requirements:
  - A podium microphone will be provided for all receptions taking place at a conference hotel. Additionally, AGU will provide one laptop, screen and LCD projector at no charge, if requested by the date specified when the function request forms are due. The average cost to AGU for providing audio-visual equipment is \$2,200; please only request audio-visual equipment needed for business related presentations.
  - If audio-visual equipment beyond the podium microphone, laptop, screen and LCD projector are needed, they may also be ordered in advance. The cost of any additional items will be charged to your Section/Focus Group's funds.
- GUIDELINES FOR NEWSLETTERS/ANNOUNCEMENTS

In an effort to provide the best support possible and ensure a more cohesive and organized process for newsletter distribution, the following guidelines are put in place and highly encouraged:

1. Each Section and Focus Group should decide how often they would like to commit to producing a newsletter, be it monthly, quarterly, or bi-annually. This will enable S/FG leaders to best curate information for their newsletters as they come across it and create more reliable expectations with their members.
2. AGU staff will provide a monthly/quarterly template, which will provide contents for S/FG leaders' consideration/approval. Contents will be offered for consideration which will include program key dates and activities, announcements and other initiatives. These templates will provide guidance on formatting and promote uniformity amongst all Section/Focus Group newsletters.
3. To clearly define the newsletter publishing timeline, please allow 1 week turnaround for transmitting newsletter content. This will allow the contents to be copyedited, draft reviewed by S/FG leaders prior to distribution. To make sure we can publish your newsletters in a timely fashion, we ask that you have your newsletter content be submitted to between the 1<sup>st</sup>-3<sup>rd</sup> of the month, depending on how often you decide to publish your newsletter (i.e. monthly, bi-monthly, quarterly). This timeline is highly encouraged, but is flexible to the needs and preference of the S/FG leaders.
4. Announcements and immediate/urgent communications can be sent out as requested, as soon as schedule allows. Please note that there is an organizational calendar in place which coordinates all communications released across AGU. If possible, please allow 3-4 days from the time of request for these types of announcements.

# **About the AGU**



# Who We Are

---

## **Mission, Vision, Values**

The purpose of the American Geophysical Union is to promote discovery in Earth and space science for the benefit of humanity.

AGU galvanizes a community of Earth and space scientists that collaboratively advances and communicates science and its power to ensure a sustainable future.

### 3-5 Year Outcome-Oriented Goals:

#### **Scientific Leadership and Collaboration**

The American Geophysical Union is a leader, collaborator, and sought after partner for scientific innovation, rigor and interdisciplinary focus on global issues.

#### **Science and Society**

The American Geophysical Union engages members, shapes policy, and informs society about the excitement of Earth and space science and its role in developing solutions for the sustainability of the planet.

#### **Talent Pool**

The American Geophysical Union is a diverse and inclusive organization that uses its position to build the global talent pool in Earth and space science.

#### **Organizational Excellence**

As a scientific society, the American Geophysical Union operates within a new business model that is sustainable, transparent, and inclusive in ways that are responsive to members and stakeholders.

(<http://sites.agu.org/leadership/strategic-plan/goals-objectives/>)

## **Who We Are**

The American Geophysical Union is an international not-for-profit, scientific organization representing more than 62,000 members in 142 countries.

Our members work for universities, research institutions, and federal, state and local government agencies, as well as corporations and non-profit organizations. Their research encompasses everything from searching for and managing natural resources like energy and water . . . to predicting why, when, and how natural and man-made hazards and disasters will impact our communities and developing ways to warn and protect us . . . to studying the causes and impacts of climate change and finding ways for us to mitigate and adapt to them . . . and to understanding how the Earth, oceans, heliosphere, solar system and exouniverses work and what it means for our past, and our future.

## **What We Do**

AGU is a leader in the scientific community with an eye for innovation, rigor and interdisciplinary focus related to a wide range of critical global issues. We publish 19 world-renowned scientific journals on a broad array of topics, and our digital library includes nearly 70,000 articles dating as far back as 1896. Each year we host between four and ten conferences—including the leading annual meeting of over 20,000 scientists from around the world—designed to promote the dissemination of scientific research to a wide variety of audiences, drive the advancement of science and innovation, inform policy, and facilitate essential collaboration between researchers and other stakeholders in the public and private sectors.

Through our education and outreach initiatives, as well as our career services, AGU is taking steps to help bridge the Earth and space science workforce gap and cultivate the scientists of tomorrow. We are also working to ensure that our nation's policy decisions support and advance science's ability to protect public safety and promote economic growth through our public and government affairs programs—including our annual Science Policy Conference. And we support initiatives like the Thriving Earth Exchange that allow communities and organizations to access the combined talents of thousands of scientists in their efforts to solve real-world challenges.

## **Why Our Science Matters**

Throughout history, communities, regions, and nations around the globe have reaped the benefits that come from investing in scientific research and development. Companies that employ tens of thousands of people and contribute tens of billions of dollars to the global economy were born from a single research grant. Technologies that represent the first line of defense against hurricanes, tornadoes, floods and droughts for hundreds of millions of people worldwide are the result of the type of scientific innovation that is fostered in labs every day.

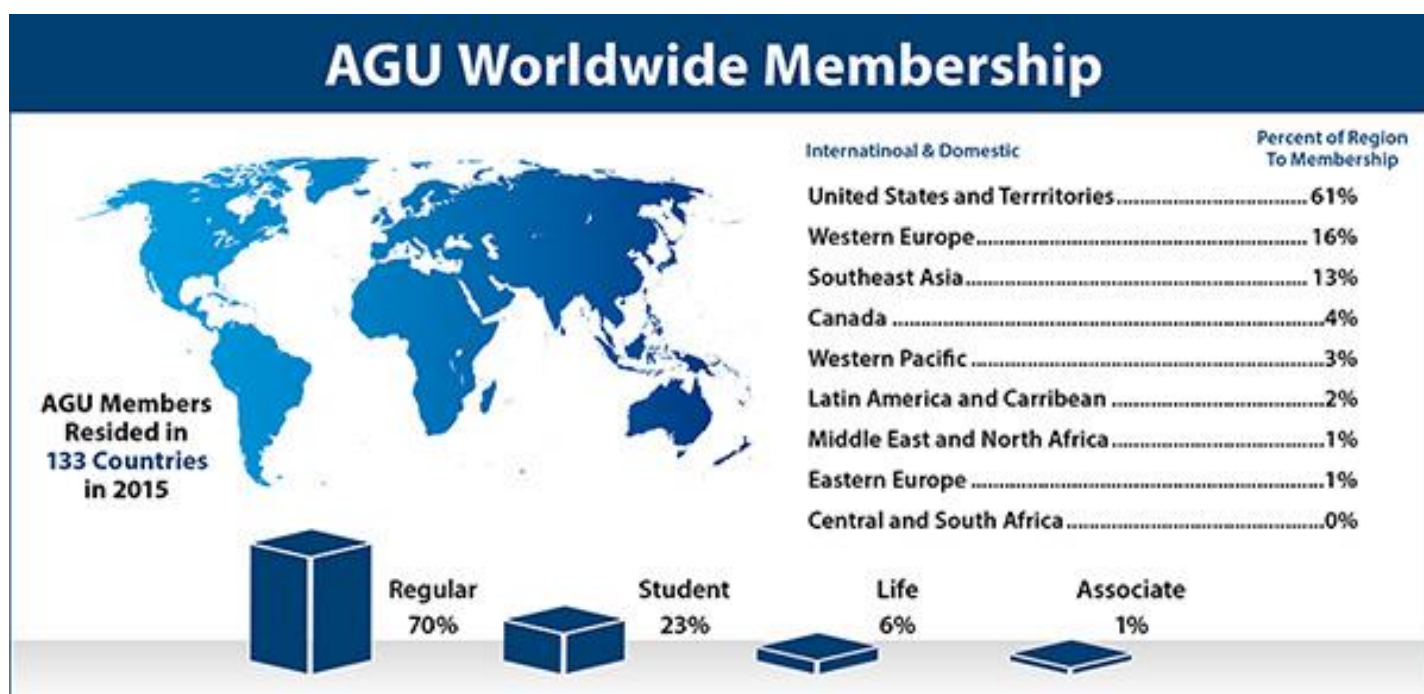
Earth and space science saves lives, grows the world's economy, and supports global competitiveness. Earth and space science is essential to our understanding of the past, our management of the present, and our preparation for the future.

## Membership Profile and Demographics

AGU members make up the largest single organization dedicated to the advancement of geophysics. Uniting Earth, atmospheric, oceanic, hydrologic, space, and planetary scientists, AGU provides a dynamic forum for the geophysical community through top-ranked scientific journals, world-renowned meetings and conferences, news and political updates, and scientific and technical committees.

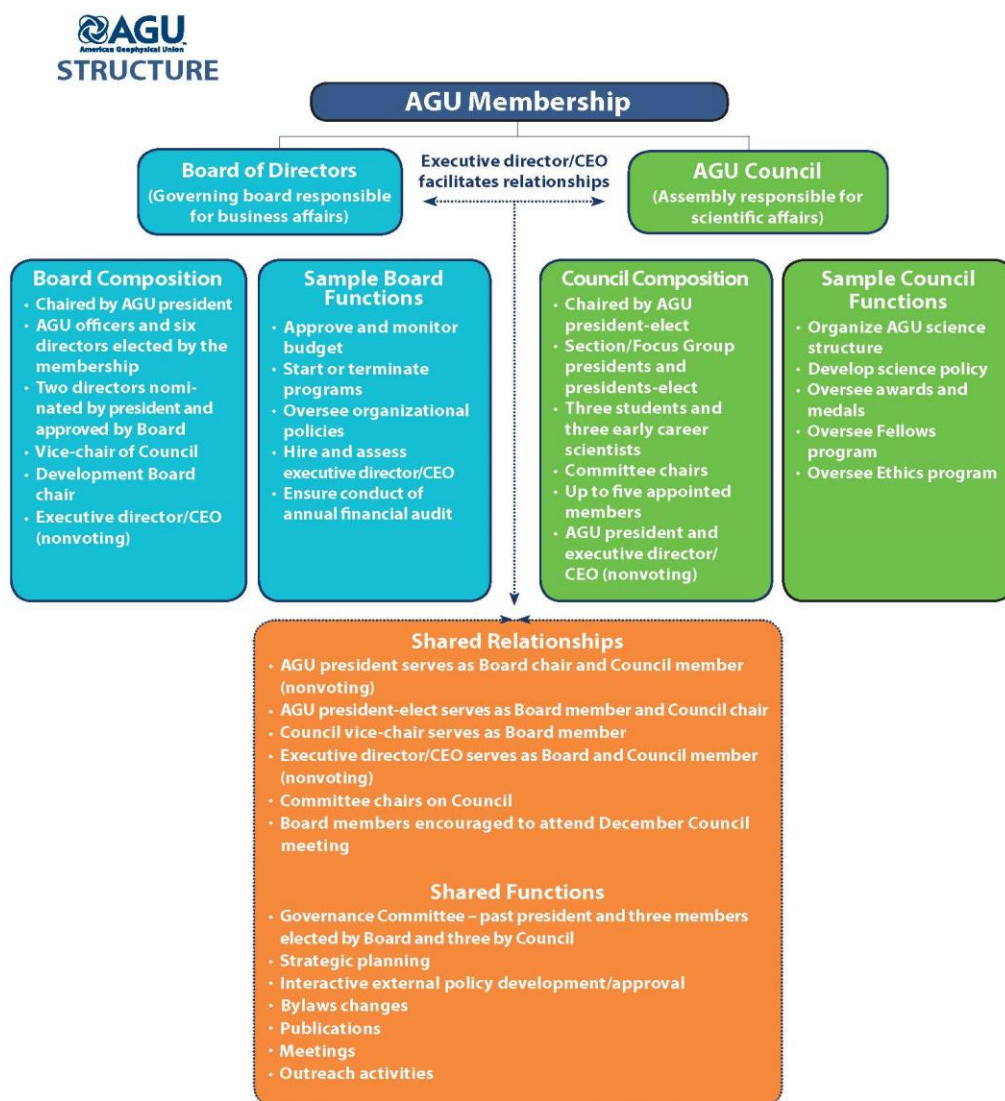
AGU membership is based on the calendar year, any membership payments received before 15 October will be towards memberships expiring on 31 December of that year. Membership payments received after 15 October will be applied towards memberships in the following calendar year.

AGU Members <http://membership.agu.org/>



# Governance Structure/Roles

The following diagram depicts how the Board, Council, committees/task forces, and staff work together to advance AGU's strategic plan.



# Major Programs and Strategic Initiatives

---

## Publications

AGU publishes 20 highly respected, peer-reviewed scientific journals covering research across the Earth and space sciences; an online news site, [eos.org](http://eos.org) (accompanied by a bi-weekly magazine); and award-winning books. AGU publishes more than 6000 original research and review articles each year. Publications include both gold open access and subscription journals.

### AGU JOURNALS

---

- **GeoHealth** -- Open Access
- **Earth and Space Science** - Open Access
- **Earth's Future** - Open Access
- **Geochemistry, Geophysics, Geosystems**
- **Geophysical Research Letters**
- **Global Biogeochemical Cycles**
- **Journal of Advances in Modeling Earth Systems (JAMES)** - Open Access
- **Journal of Geophysical Research**
  - **Atmospheres**
  - **Biogeosciences**
  - **Earth Surface**
  - **Oceans**
  - **Planets**
  - **Solid Earth**
  - **Space Physics**
- **Paleoceanography**
- **Radio Science**
- **Reviews of Geophysics**
- **Space Weather**
- **Tectonics**
- **Water Resources Research**

### PARTNERED JOURNALS

---

- **Chinese Journal of Geophysics** (with the Chinese Academy of Sciences)
- **Earth Interactions** (with the American Meteorological Society)
- **Nonlinear Processes in Geophysics** (with the European Geophysical Union)
- **Geophysics** (Society for Exploration Geophysicists)
- **Interpretation** (Society for Exploration Geophysicists)
- **The Leading Edge** (Society for Exploration Geophysicists)

## Meetings

The AGU Meetings program serves as a vital component of the Union. Programs range from the world-renowned Fall Meeting with an attendance of more than 22,000 to the more intimate settings of Chapman Conferences. AGU is also proud to collaborate with international attendees at the Joint Assemblies and Meeting of the Americas as well as ASLO and TOS for the Ocean Sciences Meeting. Our programs provide a platform for engagement and exchange, a proven value to our international membership of nearly 60,000.

[Link to all AGU Meetings for the year](#)

### Fall Meeting

With approximately 24,000 attendees in 2016, AGU's Fall Meeting is the largest Earth and space science meeting in the world. Last year marked Fall Meeting's 49<sup>th</sup> year as the premiere venue to present your research; hear about the latest discoveries, trends, and challenges in the field; and network with colleagues that can enhance your career.

Fall Meeting brings together the entire Earth and space science community from across the globe for discussions of emerging trends and the latest research. The technical program includes presentations on new and cutting-edge science, much of which has not yet been published, meaning you'll return to work with knowledge you can't get anywhere else.

With more than 1,700 sessions in 2016, Fall Meeting's scientific program spans the Earth and space sciences, offering something for everyone no matter their scientific discipline. The meeting offers a unique mix of more than 20,000 oral and poster presentations, a broad range of keynote lectures, various types of formal and informal networking and career advancement opportunities, and an exhibit hall packed with hundreds of exhibitors showcasing new and relevant research tools and services that meet the professional needs of our attendees year after year. Join us in 2017 for another dynamic experience in New Orleans.

### Chapman Conferences

AGU Chapman conferences are small, topical meetings designed to permit in-depth exploration of specialized subjects in a manner not possible at large meetings. The AGU Chapman Conference program has encouraged innovative research for over 35 years.

Upcoming Meetings: <http://chapman.agu.org/>

### Societal Partnerships

- [JpGU-AGU Joint Meeting 2017](#)  
20-25 May 2017  
Chiba, Japan
- [AGU-SEG Hydrogeophysics Workshop](#)  
24-27 July 2017  
Stanford, California, USA

### Ocean Sciences Meeting

The 2018 Ocean Sciences Meeting will take place 11-16 February in Portland, Oregon.

## Honors Program

AGU's Honors Program is a diverse program for recognizing individuals who have made outstanding contributions to the advancement of the geophysical sciences, to the service of the community, and public outreach. The program aligns with AGU's strategic goals in scientific leadership, talent pool development, science and society and organizational excellence.

### HONORS BY TYPE

---

- [Union Medals](#)
- [Union Fellows](#)
- [Union Awards](#)
- [Union Prizes](#)
- [Section and Focus Group Honors](#)
- [Research Grants and Scholarships](#)

### HONORS BY DEMOGRAPHIC

---

- [Student/Post Doc](#)
- [Early Career Scientists](#)
- [Mid-Career Scientists](#)
- [Senior Level Scientists](#)
- [Section/Focus Group Affiliation](#)
- [Section/Focus Group Lectures](#)
- [Open to AGU Members](#)
- [Open to Non-AGU Members](#)

### QUICK LINKS

---

- [Honors Program and AGU Strategic Goals](#)
- [Policies](#)
- [Union Medals, Awards, & Prizes Timeline](#)
- [Union Fellows Timeline](#)
- [Section & Focus Group Awards Timeline](#)
- [2015 Demographics](#)
- [2016 Demographics](#)

## **Student/Early Career Scientists Programs**

### **CAREERS**

AGU runs a career program offering career advice and job data.

### **GRANTS**

AGU administers programs to provide travel and research support for students.

### **MENTORING**

Need help planning your next step or developing a five-year plan? AGU offers exciting mentoring programs to connect students and early career scientists with the experts in their fields.

### **DIVERSITY**

AGU is committed to increasing the number and diversity of Earth and space scientists and is involved in a number of diversity initiatives.

### **PROGRAMS FOR UNDERGRADUATE STUDENTS**

AGU holds a special scientific session for undergraduate students at its annual Fall Meeting.

### **OUTSTANDING STUDENT PAPER AWARDS PROGRAM (OSPA)**

The OSPA program allows student presenters at Fall Meeting to hone their presentation skills and receive valuable feedback from esteemed scientists. OSPA relies on anonymous volunteer judges who visit a student's poster or oral presentation and engage them in order to help provide feedback about a student's research and communication skills.

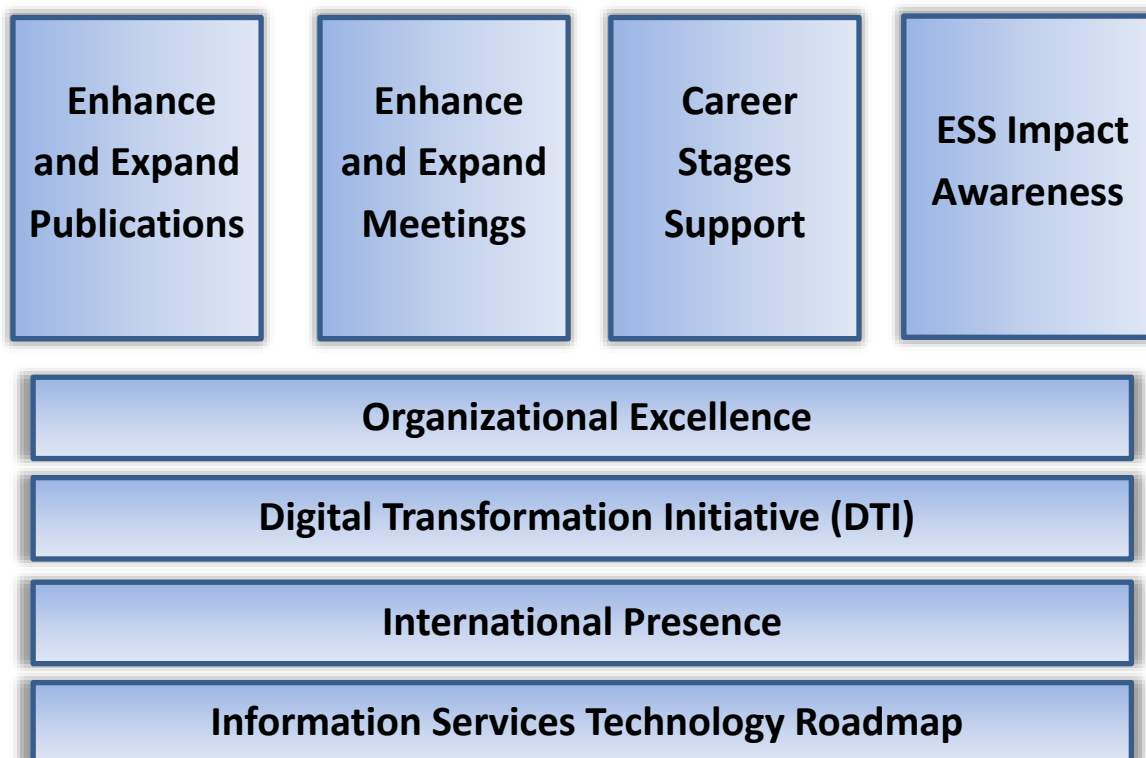


## Strategic Initiatives (2014-2018)

Following presentation and discussion at the April 2014 Board meeting, AGU staff created a multi-year implementation plan, which translates the strategic plan's goals and objectives into specific strategic initiatives (SIs) and tactics, spread over multiple years. These SIs are measurable and quantifiable from a resource and financial perspective. The implementation plan helps the Board and staff prioritize and manage resources over the planning period, identifies future needs, and provide a roadmap for implementation of the strategic plan which can be understood by the leadership and members and against which staff can report progress. The SI's are:

1. Enhance and Expand AGU's Publishing Portfolio
2. Enhance and Expand AGU's Meeting Portfolio
3. Provide Resources Supporting Scientists at all Career Stages
4. Drive Awareness of the Implications and Impacts of Earth and Space Science
5. Optimize Volunteer Engagement and Volunteer, Staff, and Financial Resource Effectiveness
6. Develop and Implement a Digital Strategy to Integrate Content and Build Community
7. Provide mechanisms for embracing and supporting AGU's International Scientist Community
8. Information Systems and Technology Roadmap to Support AGU

The first 4 SIs above are deep vertically, meaning that they have expansive programs and projects associated with achieving that specific SI. The last 3 SIs and the Information Systems/Technology Roadmap are broad horizontally meaning that the programs and projects within them support, integrate and amplify the 4 vertical SIs and AGU's program efforts. (Please see diagram below).



# **Appendices**

## AGU BYLAWS

---

The bylaws are legal documents that define AGU's purpose, requirements for membership, responsibilities of officers and other leaders, the structure of the organization, and so on.

### [AGU Bylaws](#)

## AGU ANNUAL REPORTS

---

Each year, AGU publishes an annual report outlining the achievements of the past 12 months.

2014



2013



2012



2011



2010



2009



2008

