



# Science & Society *section*



AGU's Science and Society (SY) Section is forging stronger connections between Earth and space sciences and society. We foster innovations that enable discoveries and solutions in the geosciences to benefit humanity. The SY section is the community within AGU for artists; science communicators; policymakers and decision-makers; community members; social, behavioral, and geophysical scientists; and other professionals advancing these goals.

Our section has five thematic tracks: science policy, community and citizen science, science communication, art and science, and social and behavioral sciences. [Flip the page to learn more ➔](#)

## Our Activities

SY supports a variety of activities, which are continually expanding:

- SY is a hub for fostering partnerships and broadening participation for a range of disciplines and communities.
- SY regularly offers a set of "Science and Society" track-themed sessions and discussions at AGU meetings.
- SY works to recognize efforts to better connect science and society within AGU and beyond.
- SY demonstrates a commitment to future leaders through events and networking opportunities for student and early career scientists and practitioners.

## Stay Connected:



@AGUSciSociety



[tinyurl.com/  
YouTubeAGUSciSociety](https://tinyurl.com/YouTubeAGUSciSociety)

# AGU

**ADVANCING EARTH  
AND SPACE SCIENCE**

Learn more: [connect.agu.org/scienceandsociety](https://connect.agu.org/scienceandsociety)

Join: [membership.agu.org/my-agu-login](https://membership.agu.org/my-agu-login)

[www.agu.org](https://www.agu.org) @theAGU

# Science and Society Thematic Tracks:



**SCIENCE POLICY:** Scientists have a critical role to play in advising policy makers throughout all levels of government. Section members working in this space contribute to specific science-based public policy initiatives and include scientists, policy makers, and science advocates who work at the interface of science and public policy.



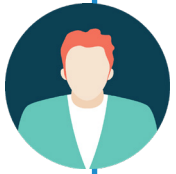
**COMMUNITY & CITIZEN SCIENCE:** In community science, scientists and communities do science together to advance one or more community priorities. This encourages communities, particularly historically marginalized and oppressed communities, to guide, participate in, learn from, and benefit from science. Citizen Science, similarly, engages the public to collaborate with scientists to assist in research and monitoring, from local to global investigations. Community and citizen science (CCS) can take many forms. Through this track we promote and share innovative and effective practices, and advance scholarship that examines and reflects on CCS approaches.



**SCIENCE COMMUNICATION:** Science communication includes the efforts of natural, physical and social scientists, communications professionals, and teams that communicate the process and values of science and scientific findings to non-specialist audiences outside of formal educational settings. The goals of science communication are varied, including enhanced dialogue, understanding, awareness, enthusiasm, improving decision making, or influencing behaviors. Science communication channels include in-person interaction, online, social media, mass media, or other communication methods.



**ART & SCIENCE:** Scientific and artistic endeavors are both used to explore and understand the world around us. Artistic techniques can help scientists visualize data and communicate results to other scientists as well as non-scientists. Art plays an increasingly important role in science education in both informal and formal environments. The integration of art and science yields interdisciplinary methodologies that enable connections between science and society.



**SOCIAL & BEHAVIORAL SCIENCE:** One of the fundamental motivations of geosciences is to produce knowledge that helps to solve society's most pressing issues. Social and behavioral sciences can help us understand how people and institutions think, feel, and behave with respect to scientific knowledge. Insights from varied fields (including but not limited to anthropology, economics, history, political science, decision science, psychology, education, and sociology) and from non-academic communities, can help to forge stronger linkages between science and society. This track promotes research and practice from these fields, and aims to serve as a bridge between social sciences and other disciplines in geosciences.



## I want to be a section member:

- Log into [membership.agu.org/my-agu-login](https://membership.agu.org/my-agu-login).
- Scroll down to Sections & Focus Groups.
- Click > arrow to select sections.
- If Science and Society is listed, then you're already a member! If not, click +Add and add it.

## I want to volunteer:

- Fill out this form (<https://tinyurl.com/8svrxyk>) to volunteer or nominate colleagues to become more involved in SY section activities and leadership.

## I have a question:

- Reach out to the SY Executive Committee with any questions: [connect.agu.org/scienceandsociety/about/leadership](https://connect.agu.org/scienceandsociety/about/leadership)

# Join Us!

