

Changing Rhode Island  
With A Giving Heart



**2022**

**National Philanthropy Day<sup>®</sup>**

Wednesday  
November 9, 2022  
5:30 pm

Cocktail Party &  
Awards Ceremony  
The Graduate  
Providence, RI

*Rhode Island  
Celebration*



The most important thing  
you can do while you're here  
is to ensure the world will be  
better when you're not.

One of life's great achievements is the  
ability to leave a lasting legacy.

We can help.



RHODE ISLAND  
FOUNDATION

[rifoundation.org/legacy](http://rifoundation.org/legacy)  
or call (401) 274-4564



# National Philanthropy Day 2022 is Sponsored by:

## Presenting Sponsor



RHODE ISLAND  
FOUNDATION

---

## Gold Sponsors

**Amica Companies**  
FOUNDATION



## Bronze Sponsors



Member FDIC



*Russell Morin*  
CATERING & EVENTS



## Media Sponsor

PROVIDENCE BUSINESS NEWS  
**PBN**

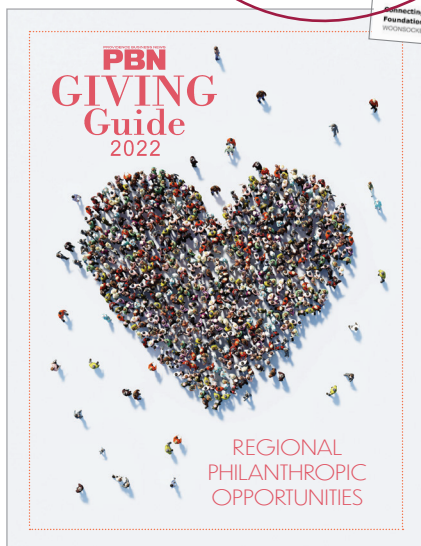
---

PROVIDENCE BUSINESS NEWS

# PBN

*is proud to support National Philanthropy Day  
and applaud the 2022 honorees.*

Sign up for our free  
**nonprofit e-newsletter**,  
delivered every  
other Wednesday  
to your inbox.  
Visit [PBN.com/email](https://PBN.com/email).



The Giving Guide, published every October, connects top level business executives and their employees to the region's nonprofit offerings. Profiles of nonprofit organizations highlight their mission to gain support of corporate leaders who can devote their time and resources.

With readership of over 28,000 and year-long digital exposure, it's the best resource to share your mission with the business community.

**For sponsorship and advertising opportunities, contact  
[Advertising@PBN.com](https://Advertising@PBN.com) | 401.680.4800**

**TRUSTED. TIMELY. INSIGHTFUL.**  
**Your #1 Resource For Local Business News**  
**Subscribe today. Print & online unlimited access:**  
**[PBN.com/Subscribe](https://PBN.com/Subscribe) 855-813-5803**





# 2022 Partners in Philanthropy

## Changing Rhode Island With A Giving Heart

### Program

#### Opening Greetings

**Erica Busillo Adams**, NPD 2022 Chair

**6:00 pm**

#### Welcome

**Edward McPherson**, AFP-RI Board President

#### 2022 Award Presentations

Outstanding Philanthropic Business

##### **Greenwood Credit Union**

Presented by Edward McPherson

Outstanding Philanthropic Citizens

##### **Jyothi & Shivan Subramaniam**

Presented by Neil D. Steinberg,  
President & CEO, Rhode Island Foundation

**7:00 pm**

Herbert E. Kaplan Youth in Philanthropy Scholarship

##### **Kanyinsola Yekini**

Presented by Edward McPherson

#### Partners in Philanthropy Slideshow

Erica Busillo Adams

#### Closing

Proud to support the  
Association of  
Fundraising Professionals –  
Rhode Island Chapter



866-51-Amica (26422)  
Amica.com

Amica Mutual Insurance Company, Lincoln, Rhode Island



# 2022 Partners in Philanthropy

Changing Rhode Island With A Giving Heart

## Contents

**Sponsors** ..... 2

**Program** ..... 4

**2022 Outstanding Philanthropic Award Recipients**

    Outstanding Philanthropic Business

**Greenwood Credit Union** ..... 8

    Outstanding Philanthropic Citizens

**Jyothi & Shivan Subramaniam**..... 10

    Herbert E. Kaplan Youth in Philanthropy Scholarship

**Kanyinsola Yekini** ..... 12

**2022 Partners in Philanthropy** ..... 14-31

**National Philanthropy Day 2022 Committees** ..... 32-33

**AFP-RI Board of Directors**..... 34

**National Philanthropy Day Past Awards** ..... 35



# Harpswell House, Inc.

Craftsmen in stone since 1960



## FOR OVER FIFTY YEARS HARPSWELL HOUSE

has been crafting unique and distinctive products from natural materials. Today we continue this tradition by producing some of the highest quality recognition products and gifts in the world from domestic slate.

Recognize your meritorious donors, employees, and other contributors with the highest quality recognition awards and gifts available. The same awards and gifts that have been bestowed upon the likes of Princess Diana, Mijail Gorbachov (Mikhail Gorbachev), President Bill Clinton, Michael Jordan, and many, many others.

PO Box 305, Topsham, Maine 04086

Web: [www.harpswellhouse.com](http://www.harpswellhouse.com) • Email: [customerservice@harpswellhouse.com](mailto:customerservice@harpswellhouse.com)

Office: 207-844-8380 • Toll Free: 800-764-8767

# Outstanding Philanthropic Business

---

## Greenwood Credit Union

Nominated by: The Gamm Theatre

---

Based in Warwick, Greenwood Credit Union has been providing locally based, personalized banking services in Rhode Island and beyond for more than 70 years. In 2021, GCU partnered with 72 different organizations and is on track to support the same, if not more, in 2022. Through their “Casual for a Cause” events, employees had the opportunity to raise funds for community organizations by “dressing down” and making a cash donation. Some of these organizations included Boys & Girls Club of Warwick, Brain Injury Association of Rhode Island, Children’s Wishes, Hasbro Children’s Hospital, Thrive Behavioral Health, Warwick Animal Shelter, Westbay Community Action, Young Voices, local food banks, and many more.

From its annual Customer Celebration Day to supporting local nonprofits, Greenwood has a presence in Warwick and beyond that consistently demonstrates their commitment to the community and its people. Walking into their building feels like visiting family – and every interaction with staff is a reminder of how deeply Greenwood lives its values. Along with their significant philanthropic support, Greenwood’s President & CEO, Fred Reinhardt, just completed his service on The Gamm’s Board of Directors as Treasurer and Finance Chair, and continues service as a member of the Board of Directors. He also serves on the Boards of the J. Arthur Trudeau Memorial Center and Thrive Behavioral Health. Fred’s employees follow his lead



and are involved in the community through volunteerism as well.

Of special note: Greenwood Credit Union is the lead sponsor of The Gamm’s annual holiday show, *It’s a Wonderful Life: A Live Radio Play*. This sponsorship is particularly meaningful because *It’s a Wonderful Life’s* main character, George Bailey, takes over the town’s credit union after his father’s passing and consistently makes choices that save the residents of the town. Greenwood Credit Union, through its banking model and its involvement in the community, has impacted too many lives to count.

A true community partner, Greenwood Credit Union philanthropically supports local nonprofits through significant sharing of time, talent, and treasure. Greenwood Credit Union’s deep commitment to others in the community – lifting up the most vulnerable, stepping up whenever asked – represents the kindness and commitment the institution shares with so many.



**Rhode Island**  
**Rising.**  
**IT'S WHAT**  
**WE LIVE FOR™**



Blue Cross & Blue Shield of Rhode Island is an independent licensee of the Blue Cross and Blue Shield Association.  
 9/21 CR-597630

**Be a part of the largest  
 giving day in Rhode Island.**

Nonprofit registration opens in  
 November 2022.

To receive information about  
 registering your nonprofit, or to  
 become a sponsor, contact us at  
[401gives@unitedwayri.org](mailto:401gives@unitedwayri.org).

**[www.401gives.org](http://www.401gives.org)**



powered by United Way of Rhode Island

# Outstanding Philanthropic Citizens

---

## Jyothi & Shivan Subramaniam

---

Jyothi and Shivan Subramaniam have given their time, talent, and treasure to building opportunities for Rhode Island. Along with their generosity, Jyothi and Shivan bring a wealth of experience. Shivan is the retired Chairman and CEO of FM Global. He has served on many high-level non-profit boards in Rhode Island. He remains an active member of the Board of Directors of Lifespan, Johnson & Wales University, and the RI Public Expenditure Council and previously served on the Board of Bryant University. Jyothi holds a graduate degree in Hotel Management from University of Massachusetts, Amherst and is a former faculty member of Johnson & Wales University. She serves on the Rhode Island Community Food Bank's Board of Directors as the Vice President and will become Board President in 2023. She also serves on the Board of Directors of Southside Community Land Trust. She formerly served on the Boards of the Community Libraries of Providence and The Wheeler School.

Jyothi and Shivan have a particular focus on addressing food insecurity in Rhode Island and have been steadfast supporters of the Rhode Island Community Food Bank and Southside Community Land Trust for many years. They increased their giving during the COVID-19 crisis and have taken a holistic approach to assessing the needs in the community and where they choose to make an impact. Jyothi said, "Once you prioritize food, you start looking at children, education, and family services. And we realize that resources make a difference and that these organizations depend on support."

One of the biggest inspirations is their recognition that if they want to live in a thriving community, they have to support it. "We live relatively simple lives," Jyothi said. "We



are grateful for what we have. We love giving back and seeing the impact it makes in the environment we live in. When you give and get involved, you see how this support is so important to the organizations in achieving their missions." The Subramaniam family also provide financial support to other organizations around Rhode Island, including Bradley Hospital, United Way of Rhode Island, Crossroads, Amos House, Family Service of RI, Dorcas International, Planned Parenthood, Sojourner House, Community Libraries of Providence, Providence Public Library, WaterFire Providence, and Save the Bay.

The Subramaniam family is also dedicated to education by supporting Breakthrough Providence, Johnson & Wales and establishing scholarships at URI, Bryant University, and MIT (Shivan's alma mater). In 2021, they joined a small group of donors who partnered with the Rhode Island Foundation to support hiring more teachers of color in the Providence school system. They also support the Civic Leadership Fund at the Rhode Island Foundation. The Subramaniam family's creativity, focus, and love for Rhode Island truly inspires so many of us.

Congratulations, Jyothi and Shivan!



# NEW CLIMATE SOLUTIONS. FOR YOU. FOR THE PLANET.

Unlock the power of data to  
assess and report your risk.

[ClimateResilience.com](https://ClimateResilience.com)





# Herbert E. Kaplan Youth in Philanthropy Scholarship

---

## Kanyinsola Yekini

Highlander Charter School

---

Kanyinsola “K” Yekini, a senior at Highlander Charter School in Warren, RI, was nominated by teachers James Stringer and Amanda Icampo for the Herbert E. Kaplan Youth in Philanthropy Scholarship. Inspired by experience with the Nonviolence Institute, K has made a difference by taking the ideas of nonviolent conflict resolution to students and staff members at Highlander Charter School. K created workshops for Highlander’s middle school students and is building a peer mentoring program at the school, both with the goal of helping her fellow students deepen their own self-awareness so they can be more thoughtful about their interactions with others. She broadened her experience on a recent trip to Ireland, spending time working with a Protestant youth group on the same Kingian principles of nonviolent conflict resolution.

Highlander Charter School values using community service to advance social justice. Teacher Amanda Icampo notes that “K has dedicated her time to our school – and beyond – with countless community service hours and lending a helping hand whenever a classmate is in need.” K’s exemplary dedication to helping make her community a better place makes it clear that to her, good deeds are everything. “Karma follows you everywhere,” K says. Her ability to fuse what



she has learned with ways that make a real difference in her community, exemplifies how all of us can give of ourselves to make a world where everyone can thrive.

Congratulations, K!

WE ARE PROUD TO SUPPORT NATIONAL PHILANTHROPY DAY.  
CONGRATULATIONS TO THE 2022 HONOREES!



**WE DON'T JUST CATER FOOD, WE CATER EXPERIENCES.**

We are inspired by the small things — the little details that come together to make a big, lasting impression. From the just-right balance of seasonal flavors, to the perfect place setting, and all the nuances that will set the perfect tone for your big event. Our team of experts is knowledgeable in all aspects of event planning and execution to deliver a truly memorable culinary experience.

[morins.com](http://morins.com)

## You Can Change Rhode Island With A Giving Heart TODAY!



All donations will go  
towards supporting  
AFP-RI youth and  
diverse communities  
scholarships.

[Scan here to donate](#)



## 2022 Partners in Philanthropy

### Changing Rhode Island With A Giving Heart

#### 134 COLLABORATIVE

---

##### **Jon Prata & the Squantum Association**



Since 2016, Jon Prata and the Squantum Association have been an amazing partner in support to 134 Collaborative. After a serendipitous meeting, Jon agreed to help us with our annual fundraiser. Since then, Jon & the Squantum Association have generously donated their time and resources, contributing to several successful fundraisers. They continue to host our annual fundraiser, Dining for Downcity. And, most recently, they provided a special donation to 134 Collaborative through their newly established charitable foundation. We are grateful for Jon's kind support and for Squantum's commitment to the work that we collectively strive to do in downtown Providence.

#### ADOPTION RHODE ISLAND

---



##### **Stacy Iasimone**

ARI proudly recognizes Stacy Iasimone for her vision, passion, huge heart, and unending creative energy that has brought joy during the holidays and beyond to thousands of children in foster care. While she is quick to deflect credit to others, her capacity to inspire has made Stacy the driving force behind an annual Toy Drive for ARI. After more than seven years, the toy drive has grown to have impact far beyond a one-day event – inspiring more drives and donations from across Stacy's wide network and leading to tremendous philanthropic support from hundreds of individuals directly helping children as they heal from trauma.

AUDIO • VIDEO • LIGHTING  
DECOR • RENTALS • EVENTS



338 COMPASS CIRCLE • UNIT E-2  
NORTH KINGSTOWN • RI

401.484.8790 • [APADONLINE.COM](http://APADONLINE.COM)



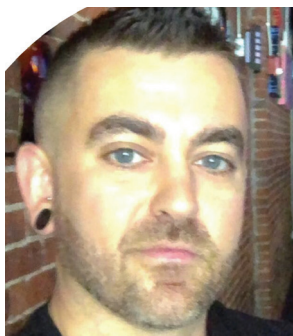
## 2022 Partners in Philanthropy

### Changing Rhode Island With A Giving Heart

#### **ADOPTION RHODE ISLAND**

---

##### **Steve Leonard**



ARI proudly recognizes Steve Leonard, owner of The Stable in Providence, for his kind heart and humble generosity. Thanks to Steve's efforts the annual Toy Drive for Adoption RI has become a fun and fabulous not-to-be missed tradition that has helped hundreds of children in foster care. He brings together a warm and wonderful community of employees, patrons, and friends of The Stable to raise thousands of dollars each year. With a corner of the bar turned over to a festive holiday display, hundreds of gifts are soon stacked in every available space – ready to make a child's holiday brighter.

#### **AFP-RI**

---



##### **Harpwell House**

Harpwell House, a leader in donor recognition products, has been a valued partner of AFP-RI for 25 years! The elegant hand-crafted slate awards that they create for AFP-RI's National Philanthropy Day are truly works of art that commemorate and celebrate the outstanding generosity of Rhode Island's philanthropic leaders – and the folks at Harpswell House are a joy to work with too! We are so lucky to partner with these wonderful people!





## 2022 Partners in Philanthropy

### Changing Rhode Island With A Giving Heart

#### AMERICAN RED CROSS

---



##### **AAA Northeast**

AAA Northeast is a longtime supporter of the Red Cross in Rhode Island and beyond. They have financially supported the Red Cross Home Fire Program, which offers families and individuals vital support after they are impacted and displaced by a home fire. AAA Northeast's support of this program also helps Red Cross preparedness efforts, including installing free smoke alarms and providing home fire safety education. AAA Northeast not only cares deeply about communities in Rhode Island, they frequently support efforts across New England and the country, including their recent response to Hurricane Ian. AAA Northeast also gives its time and talent to the Red Cross mission and their employees are active Red Cross volunteers.

#### AUDUBON SOCIETY OF RHODE ISLAND

---



##### **Barbara Walsh & Earl Simson**

Barbara Walsh and Earl Simson have a love and passion for nature. Together they have contributed to a broader understanding of the natural world through support of media campaigns, scientific research, and land acquisition with the Audubon Society of Rhode Island. The couple is active in local and state politics to advocate for progressive environmental policies. Taking action and leading the way by example, they turned their yard, in a quiet Warwick neighborhood, into a pollinator sanctuary. Barbara and Earl are never afraid to challenge Audubon to be better. We honor their commitment and support as our Partner in Philanthropy for 2022.



## 2022 Partners in Philanthropy

### Changing Rhode Island With A Giving Heart

#### **BOYS & GIRLS CLUB OF PAWTUCKET**

---

##### **Paul Pinto**



We are honored to recognize long time Club supporter Paul Pinto as our 2022 Partner in Philanthropy! Paul's service with the Club began as a Trustee in 2011 before joining our Board of Directors in 2014. He serves as the Technology Committee Chair and is a member of our Major Gifts Committee.

Paul is Chief Information Officer for Thielsch Engineering. He grew up in Pawtucket and fondly remembers his time as a Club Kid. Today Paul lives in North Kingstown with his wife Brenda and daughters Jennifer and Hillary. Thank you, Paul, for all you do for our Club!

#### **BRAIN INJURY ASSOCIATION OF RHODE ISLAND**

---

##### **H. Chris DerVartanian**



The Brain Injury Association of Rhode Island is proud to honor H. Chris DerVartanian as our 2022 Partner in Philanthropy. As an active and devoted member of the BIARI Board of Directors, Chris is a long-time donor and volunteer. Chris has helped steward the Association in several distinct roles, including serving on the Finance and Gala Committees, and continues to be an outstanding ambassador. Chris is a strong and loyal supporter of BIARI's philanthropic efforts, participating in BIARI's activities and facilitating his company's involvement with sponsorship and volunteer engagement. BIARI is truly appreciative of and inspired by the dedication to our mission and the enthusiasm, generosity and commitment of our philanthropic partner, H. Chris DerVartanian. Thank you and congratulations Chris!



## 2022 Partners in Philanthropy

### Changing Rhode Island With A Giving Heart

#### CHILDREN'S FRIEND

---

##### **Barbara Morse**



In 2019, Barbara Morse was introduced to Children's Friend through the annual Spirit of Giving Holiday Drive. When Barbara heard that some children and families had not yet been matched with a sponsor, she immediately found ways to share Children's Friend's message and ways to help the 2019 Spirit of Giving Drive match all families. Barbara has an incredible way of bringing people together—and an impeccable sense of humor—which has made her a remarkable emcee at Children's Friend's Annual Luncheon, where she also serves as a committee member. Barbara's incredible energy and willingness to always lend a hand, whether in her personal or professional life, never goes unnoticed by the Children's Friend team. Congratulations, Barbara!

##### **Doreen Scanlon**



For over eight years, Doreen Scanlon has been instrumental in creating awareness about the services offered and acting as an advocate for Children's Friend. While she may spend her mornings waking up Southern New England on ABC6, she has spent many days supporting Children's Friend's work. Doreen is a member of the organization's most successful event-planning committee and has acted as an emcee for this signature event for several years. Doreen's full-of-life and energetic personality continues to capture the attention of so many as she aims to inspire community members to participate in Children's Friend's Annual Spirit of Giving Holiday Drive. Children's Friend profoundly appreciates Doreen's energy and commitment to caring for Rhode Island's most vulnerable children.





## 2022 Partners in Philanthropy

### Changing Rhode Island With A Giving Heart

#### **THE HAITIAN PROJECT, INC.**

---

##### **Pat Newell**



Pat Newell has been an important part of The Haitian Project's community for decades. She has served as a dedicated volunteer, donor, and board member for 20 years. She has brought nearly 100 new supporters to our mission, has hosted events, and has volunteered at our school in Haiti. And as a retired educator, she was also able to improve the school's curriculum. Pat is one of the greatest advocates we've ever had and she never asks for anything in return!

#### **HIGHLANDER CHARTER SCHOOL**

---

##### **Bob Clifford**



Bob joined the Highlander family seven years ago when he volunteered for the first golf event. Since then he has taken on the role of Golf Committee Chair and dedicated hundreds of hours to raising funds for the Pete Deal Scholarship Endowment. Bob always takes time to speak with our students and he takes a genuine interest in their dreams and goals. Highlander is truly thankful to Bob for his ongoing commitment to our students!



## 2022 Partners in Philanthropy

### Changing Rhode Island With A Giving Heart

#### MEALS ON WHEELS

---

##### Jocelyn Nacci



Since joining our board of directors in July 2021, Jocelyn has been a strong advocate for Meals on Wheels of Rhode Island and has consistently gone above and beyond to provide guidance and support to our efforts, especially as we prepare to embark on our strategic plan for 2022-2025. As a dedicated member of the board development committee, she has been instrumental in helping to shape our fund development strategies, successfully exceed our annual target goals, and engage with new philanthropic partners in order to grow our fundraising portfolio. We are very lucky to have Jocelyn on our team.

#### MENTOR RHODE ISLAND

---

##### Arlene McNulty



Arlene McNulty has been retired from MENTOR Rhode Island for nearly a decade but her passion to support the work continues. Not only is she a regular donor, but she also maintains a big role in the organization's annual fundraiser, "Dancing with the Stars of Mentoring," as a dancer liaison. As a past dancer at the event she took home the People's Choice Award for raising the most money individually. For the last several years she has used that experience to help mentor the dancers as they work to meet their individual fundraising goals. Arlene also supports the dancing stars with any other issues that arise, making it a fun experience for all who support the work.



## 2022 Partners in Philanthropy

### Changing Rhode Island With A Giving Heart

#### **NEWPORT MENTAL HEALTH**

---

##### **Carol Ward**



Newport Mental Health is proud to recognize Carol Ward as their 2022 Partner in Philanthropy. A volunteer on the annual Gala Committee, Carol was the lead solicitor on over \$20,000 of gala revenue. Carol is the ultimate triple threat: serving as an active member on the gala committee, donating her Caribbean timeshare to the event auction, and recruiting 40 members of the Newport Society Club to attend Newport Mental Health's 8th annual Rock the Mansion gala. Newport Mental Health salutes Carol Ward and her friends at the Newport Society Club for their partnership in philanthropy.

#### **newportFILM**

---

##### **BankNewport**



BankNewport's unwavering support of newportFILM has provided us the opportunity to virtually present impactful documentaries. With their support, Rhode Islanders enjoy critically acclaimed, thought-provoking films – at no cost – throughout the year through our online streaming platform. BankNewport, in their commitment to centering community engagement, partners with newportFILM to celebrate our summer series by sponsoring our Audience Award. Attendees have the opportunity to enthusiastically voice their choice for favorite film screened during the summer season. A well-loved, highly visible part of newportFILM outdoors, the BankNewport Audience Award strongly signals how much Rhode Islanders value arts and culture!



## 2022 Partners in Philanthropy

### Changing Rhode Island With A Giving Heart

#### newportFILM

---

#### Dockwa



newportFILM is thrilled to partner with Dockwa as our Live Music Sponsor for our summer outdoors series. With their support, accomplished, local musicians are given a stage to shine at our weekly summer screenings. Live music, a well-loved tradition at newportFILM outdoors, brings together an appreciative audience, eager to picnic as the sun sets, enjoying arts and culture programming at iconic, outdoors locations throughout Aquidneck Island. Dockwa, whose community-driven values align closely with newportFILM's mission, has been an exemplary partner, engaging meaningfully with the community at each event. We are grateful for our partnership with Dockwa and excited to grow together!

#### Lila Delman Compass



Long-time, stalwart supporters of newportFILM, Lila Delman Compass has been an incredible partner over the years. As our presenting summer outdoors sponsor since 2014, Lila Delman Compass provides access to thousands of visitors annually attending our community-rich, free documentary film screenings. The Lila Delman Compass team has been aligned with newportFILM from the very beginning and works closely with our staff to drive powerful community engagement opportunities. We are deeply grateful to Lila Delman Compass and their commitment to building community through documentary film.



## 2022 Partners in Philanthropy

### Changing Rhode Island With A Giving Heart

#### newportFILM

---



#### Newport Hospital

Newport Hospital, our 2022 Community Anchor, has been a critical and responsive partner to the newportFILM community. As the flagship health and wellness anchor on Aquidneck Island, Newport Hospital supports our efforts to ensure that attendees are well cared for at each summer outdoor screening event. With their support, newportFILM attendees enjoy large-scale, arts and culture events that prioritize comfort and safety for all. newportFILM is deeply grateful for our Community Anchor partnership with Newport Hospital.

#### ONWARD WE LEARN

---

#### Centreville Bank.

#### Centreville Bank

For more than two years, Centreville Bank has been an incredible partner to Onward We Learn (formerly the College Crusade of Rhode Island). Centreville Bank recognizes how important families are in helping young people pursue their dreams to attend and complete college. With Centreville Bank's support, Onward We Learn is able to bring families together (in person and virtually) to help them build knowledge and confidence about the college application process. Onward is so fortunate to have Centreville Bank as our Partner in Philanthropy.



## 2022 Partners in Philanthropy

### Changing Rhode Island With A Giving Heart

#### **POTTER LEAGUE FOR ANIMALS, INC.**

---

##### **Pat Galuska**



Pat Galuska is a longtime supporter and 15-year veteran volunteer of the Potter League for Animals, Inc. Pat was the 2018 Lore Owens Volunteer Award recipient, which recognizes an individual the community feels truly emulates Lore's personality, commitment, and breadth of contributions as an "unsung hero" of the Potter League. Pat is also a six-time Potter League foster mom who most recently became an adoptive mom again of beautiful Lexi (see photo). She has been instrumental in helping with years of signature fundraising events, and currently spends three afternoons a week as a Greeter at the front desk helping pet families meet their match. The Potter League is grateful for Pat's passionate commitment to the mission, as the heart of a compassionate community, enriching lives and promoting the humane treatment of animals.

##### **Photography by Jessica Pohl**



Photography by Jessica Pohl is a small business that plays an integral role in our organization. Every Monday, rain or shine and including holidays, Jessica Pohl of Photography by Jessica Pohl shows up to take every single animal's photo in the building. Dogs, cats, rabbits, hamsters, gerbils, birds, roosters, goats, and peacocks. You name it – she's photographed them. These photos are a very important part of getting the animals available for adoption seen, often topping over a million views a year. She does all of this without fanfare or desire for any sort of credit. Jessica believes wholeheartedly in volunteerism and being a part of a community that gives back. We applaud Jessica for her years of philanthropic generosity in assisting our nonprofit, as well as so many others.



## 2022 Partners in Philanthropy

### Changing Rhode Island With A Giving Heart

#### PROVIDENCE PERFORMING ARTS CENTER

---

##### **Gary Furtado**



The Providence Performing Arts Center salutes Gary Furtado as a Partner in Philanthropy in celebration of his outstanding citizenship. An engaged leader in both Rhode Island's business community and the nation's financial industry, Gary's generosity of spirit and commitment to service are evident to all who know him. PPAC is fortunate to have Gary in our community, supporting our outreach and other initiatives and serving on our Board of Directors since 2008. Thank you, Gary, for being our Partner in Philanthropy and congratulations on your retirement!



##### **Navigant Credit Union**

The Providence Performing Arts Center salutes Navigant Credit Union as a Partner in Philanthropy in recognition of their long-standing commitment to worthwhile causes and organizations throughout Rhode Island. Navigant is committed to the financial well-being of the families, businesses and communities in which they serve since their founding in 1915. PPAC is grateful and humbled by Navigant's almost two decades of corporate support. Thank you, Navigant Credit Union!





## 2022 Partners in Philanthropy

### Changing Rhode Island With A Giving Heart

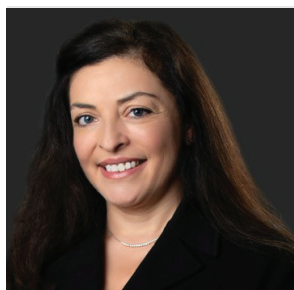
#### PROVIDENCE PUBLIC LIBRARY

---

#### **Nicole Almeida & Evelyn Ranone**



BayCoast Bank's Nicole Almeida, Senior Vice President, Chief Diversity Officer and Evelyn Ranone, Vice-President, CRA Officer-DEI set the standard for corporate philanthropic engagement! From site visits to volunteering to enthusiastically attending events, both Nicole and Evelyn make a point of developing sincerely meaningful relationships with the many nonprofits BayCoast Bank supports. Providence Public Library (PPL) is so fortunate to have them as partners in and true advocates for our work, in particular as ongoing lead sponsors of our Technology Career (TC) Pathway program. Thank you, Nicole and Evelyn, for all that you do for our community! Cheers to you!







## 2022 Partners in Philanthropy

### Changing Rhode Island With A Giving Heart

#### **RHODE ISLAND FOUNDATION**

---

##### **Dr. Pablo Rodriguez**



Pablo is a philanthropic leader and the Rhode Island Foundation is proud to work with him to address the needs of the people of Rhode Island. Pablo has served on the boards of numerous Rhode Island nonprofits and is a former Chair of the Foundation's Board of Directors. He currently serves on our Long Term Planning Health Committee, the Equity Leadership Initiative Advisory Committee, and participates in the Latino Giving Circle, a collective giving fund hosted by the Foundation, with members determining how to direct their joint donation to support their community. Pablo was instrumental in launching Latino Public Radio and is a widely-respected health policy commentator. He serves as Chief of Health Information for the Hispanic Communications Network. Thank you Pablo for ALL that you do to make Rhode Island a better place!

#### **ROGER WILLIAMS PARK ZOO**

---

##### **Barbara Cottam**



Barbara Cottam is the epitome of a true partner in philanthropy – humble, yet visionary, she has supported Roger Williams Park Zoo for 30 years, serving on the Board and Executive Committee of the Rhode Island Zoological Society. Through her generosity and commitment to the Zoo's mission of conserving wildlife and wild places, Roger Williams Park Zoo continues to thrive and foster future generations of environmental leaders. Her support and community influence has elevated engagement with the greater Rhode Island community by providing a safe and natural environment for our animals, inspiring curiosity through education programs, and advocating for a healthier planet through the Zoo's conservation initiatives.



## 2022 Partners in Philanthropy

### Changing Rhode Island With A Giving Heart

#### SAVE THE BAY

---



##### **Stan Dimock**

Stan Dimock exemplifies a Partner in Philanthropy. Supporting Save The Bay since 1989, he gives tirelessly of his time, talent, and treasure. His financial support is generous and steadfast, and his countless hours (in the tens of thousands) of volunteering make him truly remarkable. While he has, without hesitation, supported every fundraising effort, his most valuable contribution to our legacy has been the myriad number of individuals he has inspired by his commitment to Save The Bay and Narragansett Bay. Thank you, Stan, for all that you do, we are proud to honor you as our Partner in Philanthropy.

#### SCHOOL ONE

---



##### **Russell Carey & Rebekah Ham**

School One is pleased to recognize board member Russell Carey and his wife Rebekah Ham for their committed service, collegial support, and sustained generosity. Board member since 2018, Russell oversaw the smooth transition of School One's new Head of School while providing sage advice and counsel to navigate the process. Russell and Rebekah lead School One's 401 Gives parent challenge with an inspirational gift that galvanized parents, increased community participation, and raised proceeds resulting in School One's leadership ranking in the state. Russell and Rebekah are proud parents of Grace Carey '22, a thriving first-year student at Mitchell College.



# 2022 Partners in Philanthropy

## Changing Rhode Island With A Giving Heart

### SHIP

---

#### Diandra Kalish



Besides being someone whose personality is infectious, Diandra also never stops working to make SHIP the best organization that it can be. She fundraises like no other and is a natural leader in her willingness to step up to the plate, her ability to motivate others, and her immense passion. She tirelessly recruits, promotes, and engages with businesses and the community – doing everything with her whole heart.

### WE SHARE HOPE

---

#### Blount Fine Foods



Blount Fine Foods has proudly supported the work of We Share Hope for many years. We count on their bi-weekly donations of nourishing soups to help feed Rhode Islanders facing food insecurity. In 2022 Blount also donated 10,000 pounds of pasta for our annual Mission: Impastable food packaging event. In addition, Blount philanthropically supports the organization through event sponsorships.

#### Providence Equity Partners



Providence Equity Partners has generously supported We Share Hope with both time and funds. The team has donated many volunteer hours helping stock shelves and bag produce for Hope Market. In 2022, Providence Equity Partners also supported We Share Hope's annual events by sponsoring the Heroes of Hunger Breakfast and Flames to Feed.



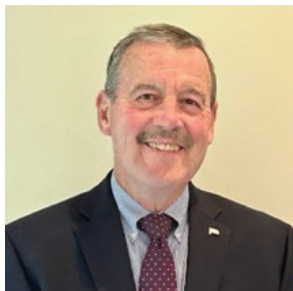
## 2022 Partners in Philanthropy

### Changing Rhode Island With A Giving Heart

#### WOOD RIVER HEALTH SERVICES

---

##### Frank Hopkins



Frank Hopkins is a semi-retired Senior Healthcare Executive currently providing short term consulting activity with Hopkins and Associates, LLC. Frank has held senior management positions at Westerly Hospital including COO, CFO, and CNO. A Vietnam Era Veteran serving as a Navy Hospital Corpsman and a Lieutenant in the Navy Nurse Corps., Frank currently serves on the board of Wood River Health Services where he has held the positions of Treasurer, Vice-Chair and Chair. Frank serves as a mentor with the YMCA Mentoring Program, a Hospice Volunteer and Veteran Liaison with Hope Hospice of RI, Community Network Partner Volunteer at Chariho HS, CALA Community Advisory Board, Chariho HS Mentoring Advisory Board, and proud Grandad!

#### WOONASQUATUCKET RIVER COUNCIL

---

##### Betty Bourret



Within moments of chatting with Betty Bourret, her boundless bicycling enthusiasm will make you eager to hop on your bike and hit the trail! Betty brings her joy to the Woonasquatucket River Watershed Council (WRWC) as a longtime volunteer, helping young people learn and love to ride. Betty is a responsive donor, supporting bike education and safety programs and our urgent organizational needs. And Betty is a trusted advisor as we expand the Woonasquatucket River Greenway's bike path system. Betty's generosity and spirit make a tremendous difference to the WRWC and Rhode Island's entire bike community.

# National Philanthropy Day 2022 Committees

## NATIONAL PHILANTHROPY DAY 2022 PLANNING COMMITTEE

**Erica Busillo Adams**

Providence Public Library

**Chair**

**Rebecca Bertrand**

New York Yacht Club Foundation

**Kelley Coen**

Boys & Girls Clubs of Newport County

**Jill Davidson**

Woonasquatucket River Watershed Council

**Stu Giannini**

G Media

**Amy Gravell**

The Gamm Theatre

**Amanda Heinsen**

United Way of Rhode Island

**Linda Hull**

**Hugh Minor**

St. Elizabeth Community

**Christine Pellegrini, CFRE**

Rhode Island Foundation

**Debra Sharpe**

Brain Injury Association of Rhode Island

# National Philanthropy Day

## 2022 Committees

### AWARDS & SCHOLARSHIP COMMITTEE

**Amy Gravell**

The Gamm Theatre

Chair

**Lisa Desbiens, CFRE**

The Providence Center

Chair Emeritus

**Marykate Bergen**

van Beuren Charitable Foundation

**Lynne Harlow**

Gruben Charitable Foundation

**Christine Pellegri, CFRE**

The Rhode Island Foundation

**Evelyn Ranone**

Baycoast Bank



## Association of Fundraising Professionals, Rhode Island Chapter

### AFP-RI Board of Directors

**Edward McPherson, CFRE**  
Newport Mental Health

**President**

**Erica Busillo Adams**  
Providence Public Library

**President-Elect**  
**National Philanthropy Day Chair**

**Amy Gravell**  
The Gamm Theatre

**Immediate Past-President**  
**Governance Chair**

**Jessica Salter**  
Amos House

**Treasurer**  
**Finance Chair**

**Christine Pellegrini, CFRE**  
Rhode Island Foundation

**AFP Foundation Chair**

**Susan Raleigh**  
Raleigh Development Consulting

**Professional Development Co-Chair**

**Jessica Null, CFRE**  
Boys & Girls Clubs of Northern Rhode Island

**Membership Co-Chair**

# Past National Philanthropy Day Award Recipients

## Outstanding Philanthropic BUSINESS

2022 Newport Restaurant Group  
2019 Russell Morin Catering and Events  
2018 Newport Tent Company  
2017 Gracie's Venture  
2016 Delta Dental of Rhode Island  
2015 Barton Gilman LLP  
2014 Coastway Community Bank  
2013 Seven Stars Bakery  
2012 Performance Physical Therapy  
2011 Centreville Bank  
2010 Koch Eye Associates  
2009 Cat Country 98.1 WCTK-FM  
2008 Lefkowitz, Garfinkel, Champi & DeRienzo PC  
2007 Pinnelli-Marra Group  
2006 RI Monthly Communications  
2005 Duffy & Shanley  
2004 WPMZ Poder 1110AM  
2002 Pawtucket Red Sox  
2001 East Side Marketplace

## Outstanding Philanthropic CITIZEN

2022 James "Jim" Vincent  
2020 Charles and Linda Newton  
2019 Ray Rickman  
2018 Dr. Joseph Chazan  
2017 Kate & Howard Kilguss  
2016 Alfred J. Verrecchia  
2015 Suzanne Magaziner  
2014 James A. Hopkins  
2013 Carol A. Peterson  
2012 Brenda & Raymond "Chip" Bolster  
2011 Louis Marciano  
2010 Joan Abrams  
2009 Constance Worthington  
2008 Marjorie Brightman Catanzaro  
2007 Arthur Robbins  
2006 Gary St. Peter\*  
2005 Barbara Stillman  
2004 Maxwell Mays\*  
2003 Simone P. Joyaux, ACFRE, ADV Dip, FAFP\*  
2002 Herman Rose  
2001 Herbert E. Kaplan\*  
2000 Mr.\* & Mrs. Henry D. Sharpe, Jr.  
1999 Guy Abelson\*  
1998 Mr.\* & Mrs.\* John Hazen White, Sr.  
1997 The Russell A. Boss Family  
1996 Mr.\* & Mrs. Malcolm G. Chace  
1995 Alan Shawn Feinstein

Carol McGovern\*, RSM awarded posthumously

1994 Alperin/Hirsch Family  
1992 Norman\* & Rosalie\* Fain  
1991 Mary Ann Lippitt\*  
1990 G. Dickson Kenney\*  
1989 The Goddard Family, George Miller  
1988 Charles E. Gleadow, Jr.\* and John W. Wall\*  
1987 William Heisler, III  
1986 Bayard Ewing\*  
1985 Thomas P. I. Goddard  
1984 Roger P. Braman\*  
1983 Allen H. Howland\*  
1982 Joseph W. Ress\*

## Outstanding Philanthropic CORPORATION

2020 BankNewport  
2019 94 HJY  
2018 New England Laborers' Tri-Funds  
2017 The Claflin Company  
2016 Ocean State Job Lot  
2015 ALEX AND ANI  
2014 Taco, Inc.  
2013 Gregg's Restaurants & Pubs  
2012 Blue Cross & Blue Shield of Rhode Island  
2011 Stop & Shop  
2010 Amica Insurance  
2009 Swarovski North America Limited  
2008 Bank of America  
2007 Edwards Angell Palmer & Dodge LLP  
2006 Collette Vacations  
2005 Whole Foods Market  
2004 BankRI  
2003 The Washington Trust Company  
2002 WJAR/NBC10  
2001 CVS Pharmacy  
2000 Verizon  
1999 BankBoston  
1998 Textron, Inc.  
1997 Fleet  
1996 Citizens Bank  
1995 The Providence Journal Company  
1994 Hasbro, Inc.

*\* Deceased*



Association of Fundraising Professionals  
Rhode Island Chapter  
11 S. Angell Street, # 419  
Providence RI 02906-5206

[www.afpri.org](http://www.afpri.org)

[info@afpri.org](mailto:info@afpri.org)

401.267.8086



@AFPRIChapter



#NPD2022

---