

# Illinois' Early Childhood Innovation Zones: Early Wins & Lessons Learned So Far

## Part 1 of 3: Building a Pipeline

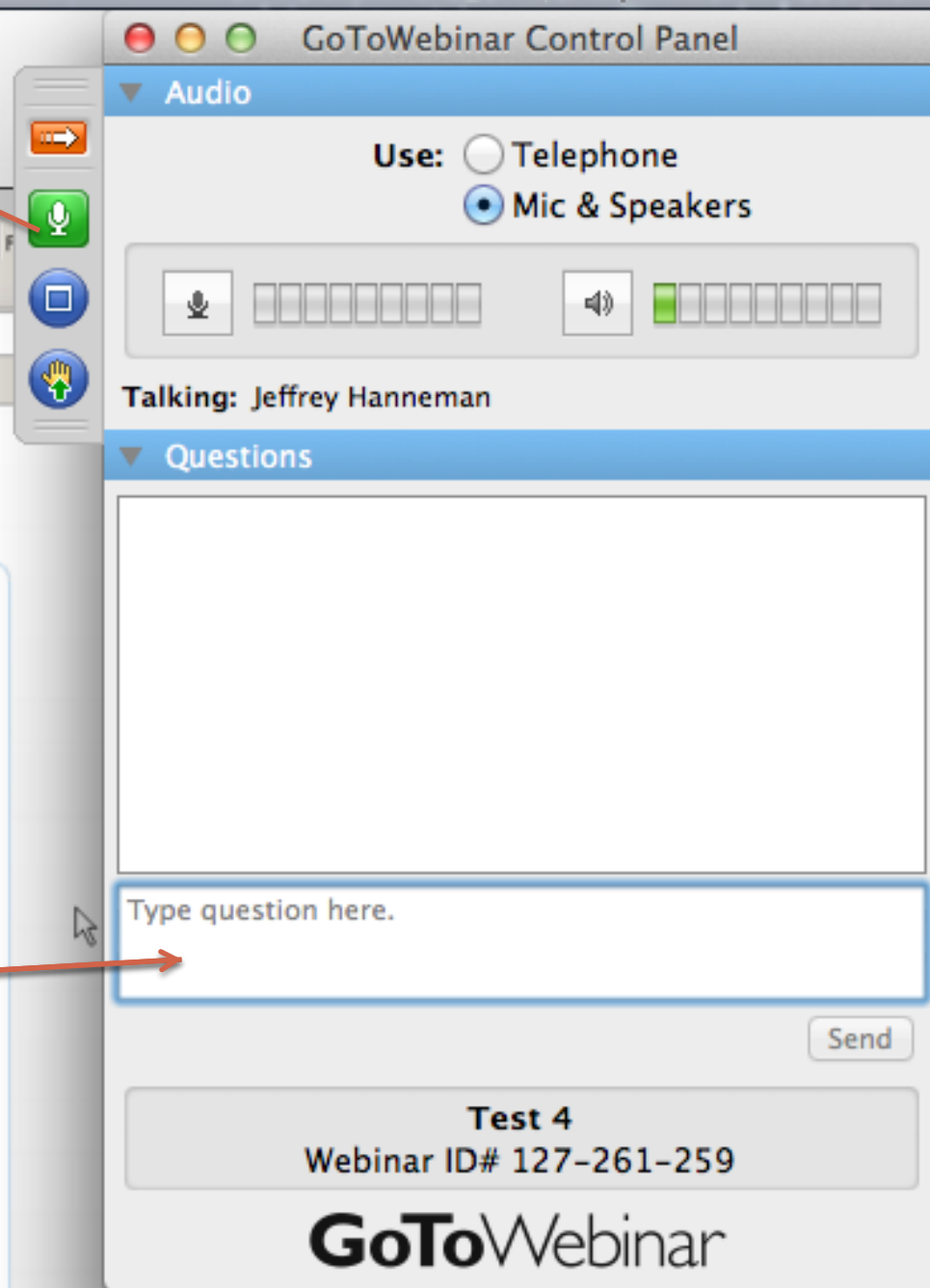
Enrolling More Very High Need Children in High Quality  
Early Learning and Development Programs  
Through Targeted Parent and Cross-Sector Outreach

# Agenda

- Innovation Zone Overview
- Stories from the Innovation Zones
  - North Lawndale
  - Pilsen & Little Village
  - Cicero
- Response from Office of Early Childhood Development
- Q & A
- Closing

All participants  
will be muted.

Type your  
question here,  
then hit “send”



The image shows a screenshot of the GoToWebinar Control Panel. At the top, the title bar reads "GoToWebinar Control Panel". Below this, there are several sections: "Audio", "Questions", and a status bar at the bottom. The "Audio" section has a "Use:" label with two radio buttons: "Telephone" (unselected) and "Mic & Speakers" (selected). Below the radio buttons are two sets of volume sliders, one for the microphone and one for the speakers. The "Questions" section has a large text area for typing questions and a "Send" button. The status bar at the bottom displays "Test 4" and "Webinar ID# 127-261-259". The GoToWebinar logo is also visible at the bottom.

▼ Audio

Use: ☐ Telephone  
☒ Mic & Speakers

Talking: Jeffrey Hanneman

▼ Questions

Type question here.

Send

Test 4  
Webinar ID# 127-261-259

GoToWebinar

Technical  
issues: type  
your issue in  
the chat box or  
send an email  
to  
[Maya.wilson@  
actforchildren.  
org](mailto:Maya.wilson@actforchildren.org)

# Innovation Zone Overview

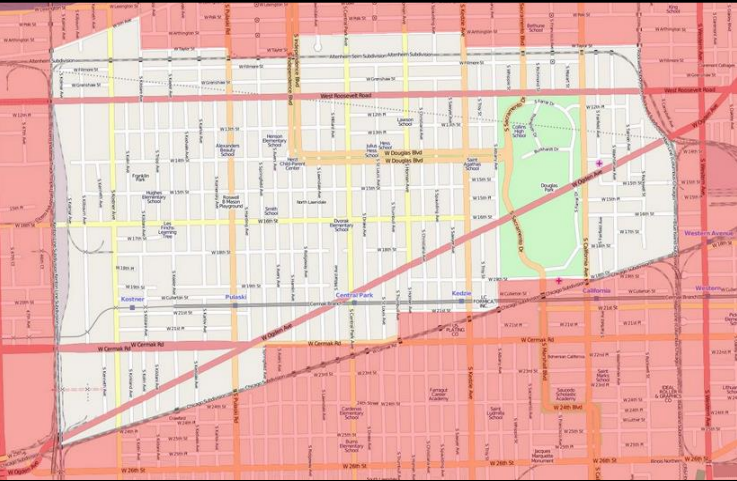
Leah Pouw,  
Director of Program Innovation  
Illinois Action for Children

# North Lawndale Innovation Zone

Aminah Wyatt-Jones  
North Lawndale  
Program Development Manager  
Illinois Action for Children



# North Lawndale Community



# North Lawndale Innovation Zone: Priority Populations

- Homeless children
- Children of teen parents
- Children in the DCFS system including foster children
- Children with disabilities
- Children in poverty or deep poverty
- Children in home-based child care who need supplemental early learning



# North Lawndale Innovation Zone: Hypothesis

- Available slots are under-enrolled by highest need populations
- 49% of 3-4 year olds not connected to early learning programs
  - Spring enrollment doesn't make sense to families
  - Unaware of menu of eligible options
  - No enrollment sites in community
  - High transience

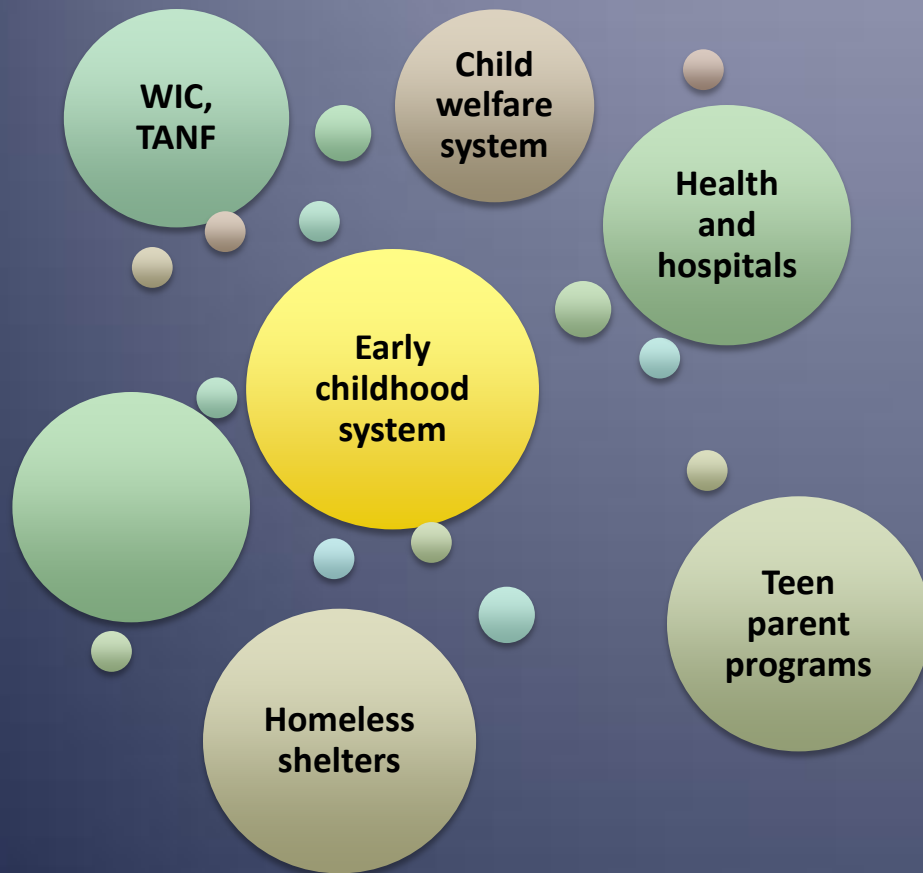


# North Lawndale Innovation Zone: Experiments

- Build a connecting “pipeline”
- Targeted outreach
- Parent engagement innovations
- Connect “family, friend and neighbor” care to formal early learning programs

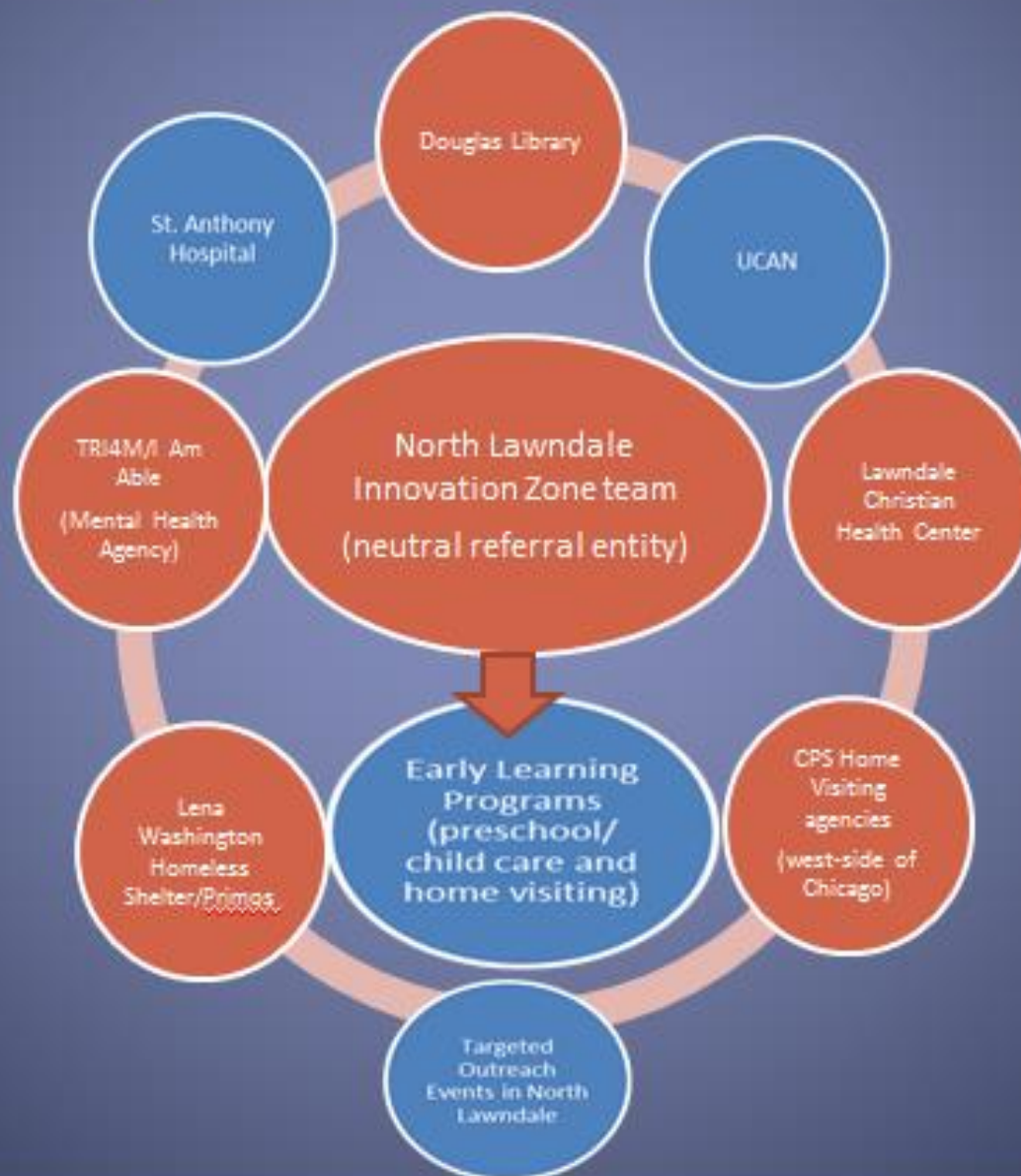


# North Lawndale Innovation Zone: Pipeline (Before)



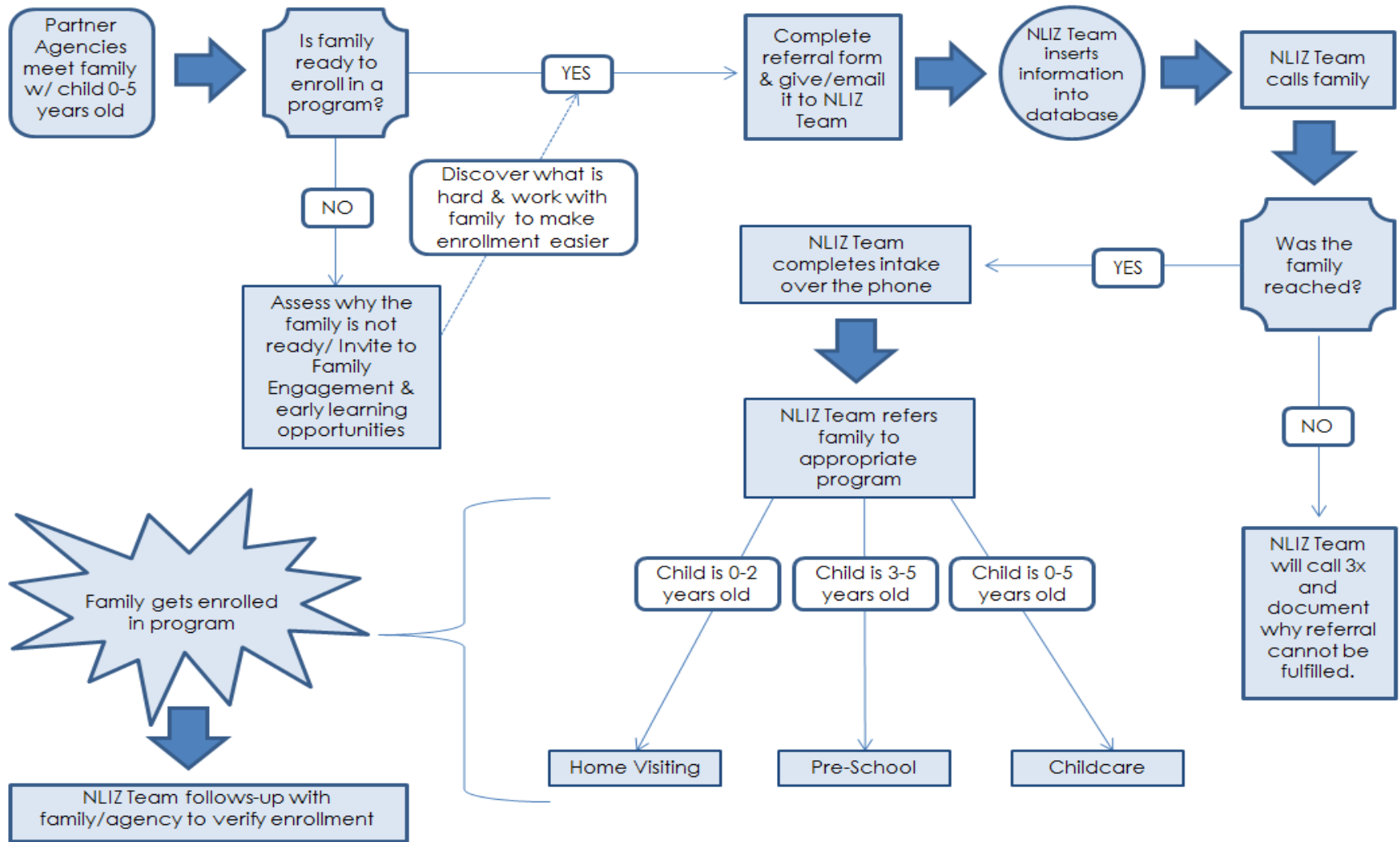
- Disconnected systems
- Some sharing, based on relationships
- Silos, no time or limited resources to connect
- Territorial, afraid to share waiting lists

# Pipeline of Partners



# Referral Flow Chart

North Lawndale Innovation Zone Referral Flow Chart



# North Lawndale Innovation Zone:

## Accomplishments

- Providers sharing slot information with one another
- Referral partnership with Lawndale Christian Health Center
- Over 200 priority children enrolled in early learning programs (home visiting & preschool)
- 100% enrollment in all CPS early childhood slots in North Lawndale



# North Lawndale Innovation Zone: Lesson Learned So Far

- Relationship building is key!
- Integrate early learning into other community efforts
- Make early learning messaging simple and to the point
- Ideas are easy, implementation...
- Find out what the data REALLY means by listening to parents in the community



# Pilsen & Little Village Innovation Zone

Dr. Caridad Rositas-Sheftel  
Early Childhood Project Manager  
Catholic Charities

# Pilsen & Little Village Innovation Zone: Priority Populations

- Young children with cultural and language isolation are under-represented in early learning programs
- Children ages birth – 5 years that are living at or below 100% of the Federal Poverty Level, including children with undocumented parents.

# Pilsen & Little Village Innovation Zone: Goals

- Increase capacity of collaboration efforts
- Facilitate outreach and enrollment
- Build a pipeline of partners

# Pilsen & Little Village Innovation Zone: Accomplishments

- The creation of a shared outreach and enrollment process:
  - Parent ambassadors
  - Shared database
  - Creation of common tools
- Small win: Eleven children are now enrolled in high quality learning programs as a result.

# Pilsen & Little Village Innovation Zone: Strategy Adaptations

- Capacity to translate documents to Spanish
- Identify alternative ways to contact families
- Identify alternative ways to communicate as a core team
- Create safe space for peer support
- Reprioritize work plan activities

# Pilsen & Little Village Innovation Zone: Lessons Learned So Far

- Families are very discouraged to enroll children due to Child Care Assistance Program changes
- Time to advocate!





# Cicero Innovation Zone



Nancy Caban-Vazquez  
Primeros Pasos Program Coordinator  
Family Focus - Nuestra Familia

# Cicero Innovation Zone: Priority Populations

- Homeless children
- Children in poverty and deep poverty
- Children of teen parents
- Children in home-based child care
- Children in DCFS System
- Linguistically isolated children



# Cicero Innovation Zone: Goals

- Quality improvement in early learning programs
- Serve more children from Priority Populations
- Engage families across the community
- Develop networks of social and health services



# Cicero Innovation Zone: Accomplishments

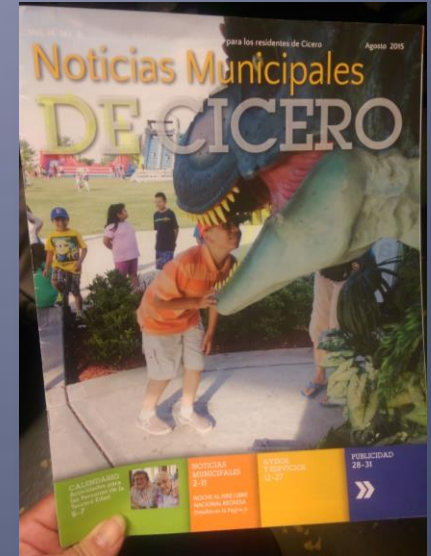
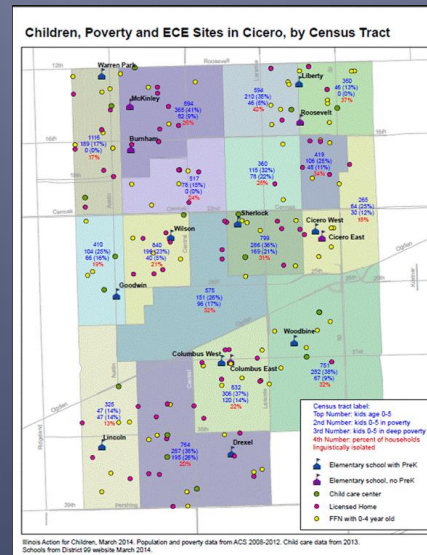
- Educate, assist, and support families



- Community outreach done by parent ambassadors using data

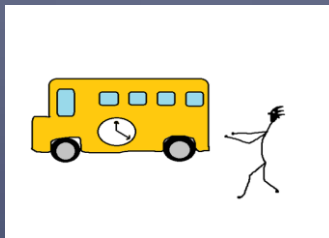
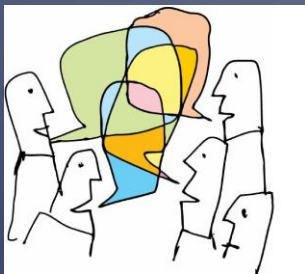
# Cicero Innovation Zone: Strategy Adaptations

- Change outreach strategy
- Use of community newspaper
- Meet families where they are



# Cicero Innovation Zone: Lessons Learned So Far

- Programs are full or have waitlists
- Programs that have openings are not accessible because of transportation
- Communication between programs, schools and parents is a challenge





# Response from the Office of Early Childhood Development

Joanna Su,  
Community Systems Policy Director  
Governor's Office of  
Early Childhood Development

# Q & A

Renee Tetrick,  
Program Innovation Analyst  
Illinois Action for Children

# For more information:

- Today's recording will be posted on Partner Plan Act Website [www.partnerplanact.org/webinars](http://www.partnerplanact.org/webinars)
- Register for upcoming webinars on Innovation Zones:
  - December 10, 2015: Developmental Screening: Increasing awareness, access and use of early intervention services
  - January 14, 2015: Quality: Strategies for Improving Early Childhood Programs
  - [www.partnerplanact.org/webinars](http://www.partnerplanact.org/webinars)
- Additional questions? Please send an email to [partnerplanact@partnerplanact.org](mailto:partnerplanact@partnerplanact.org)