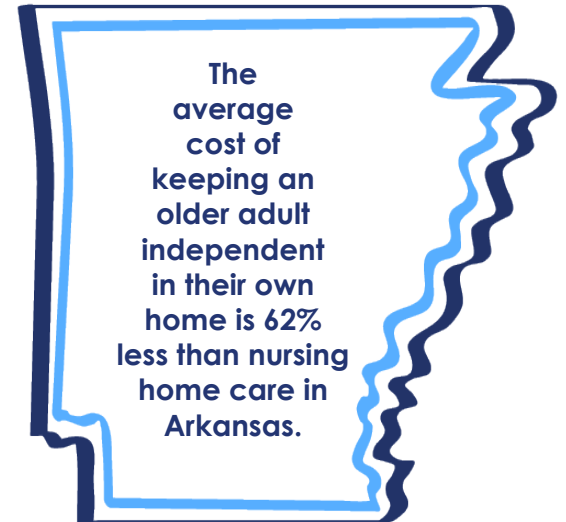


# Service coordinators in housing for older adults save taxpayer dollars

## And here's how...

Service coordinators working with low-income older adults save taxpayer dollars by facilitating access to community-based supports and services that keep them aging in place in their own homes instead of having to move to costlier institutional settings such as nursing homes.

According to Arkansas data and reports regarding delivering home- and community-based long-term care services and supports, the average cost of support services for one month is \$1,904<sup>1</sup>; while the average cost of one month of nursing home care is \$6,083<sup>2</sup>.



For example, here are some average monthly costs in Arkansas:

homemaker/home health services	\$1,904
rent subsidy	\$244 <sup>3</sup>
food stamps/SNAP benefit	\$105 <sup>4</sup>
cost of a service coordinator	\$45 <sup>5</sup>
<b>total monthly expense:</b>	<b>\$2,298</b>

***Maintaining a low-income older adult in their own home through accessing benefits and community-based supports and services saves \$3,785 every month!***



The American Association of Service Coordinators (AASC), since 1999, has been dedicated to the advancement of the service coordinator profession through leadership, education, training, professional standards, guidance and advocacy.

Our vision is to support our members that serve individuals, families, older adults and persons with disabilities in subsidized and other affordable housing situations.

<sup>1</sup> Genworth Cost of Care Survey, 2021. <https://www.genworth.com/aging-and-you/finances/cost-of-care.html>

<sup>2</sup> Ibid.

<sup>3</sup> HUD Section 202 state-by-state subsidies in 2023. <https://hudgis-hud.opendata.arcgis.com/maps/HUD::hud-section-202-properties-1/about>

<sup>4</sup> National Council on Aging Benefits Check Up: Supplemental Nutrition Assistance Program Search. <https://benefitscheckup.org/pages/supplemental-nutrition-assistance-program>

<sup>5</sup> AASC 2023 Service Coordinator Salary Survey: average hourly wage + 30% benefits/75 residents (average) per property. <https://www.servicecoordinator.org/page/salarysurvey>