

Sixty-fourth Annual Meeting
of the
Southeastern Division of the Association of
American Geographers



Hosted by:
The University of Tennessee – Knoxville

Hilton Knoxville
Knoxville, TN

November 22-24, 2009

SEDAAG Executive Committee

President: **Derek Alderman, East Carolina University**
Vice President: **Jonathan Leib, Old Dominion University**
Treasurer: **Jamie Strickland, University of North Carolina – Charlotte**
Secretary: **Katie Algeo, Western Kentucky University**
Councillor: **Douglas Gamble, University of North Carolina – Wilmington**
Past President: **Gerald Webster, University of Wyoming**

SEDAAG Steering Committee

Members of the Executive Committee (see above)

Editors, *Southeastern Geographer*: **Robert Brinkmann and Graham Tobin, University of South Florida**

Student Representative: **Dawn M. Drake, University of Tennessee**

State Representatives:

Alabama: **Lisa Davis, University of Alabama**
Florida: **Lisa Jordan, Florida State University**
Georgia: **Robert Yarbrough, Georgia Southern University**
Kentucky: **Scott Dobler, Western Kentucky University**
Mississippi: **David Holt, University of Southern Mississippi**
North Carolina: **William Graves, University of North Carolina – Charlotte**
South Carolina: **Diansheng Guo, University of South Carolina**
Tennessee: **Ronald Kalafsky, University of Tennessee**
Virginia: **Kevin Curtin, George Mason University**
West Virginia: **Ann Oberhauser, West Virginia University**

2009 Local Arrangements Committee

Ronald Kalafsky, University of Tennessee

Dawn M. Drake, University of Tennessee

Technical Advisor

Austin Rutledge, University of Tennessee

2009 SEDAAG Program Committee

2009 SEDAAG Program Committee

Jonathan Leib, SEDAAG Vice President and Program Chair, Old Dominion University

Roopa Swaminathan, Assistant to the Program Chair, Old Dominion University

Tom Allen, East Carolina University

Shrinidhi Ambinakudige, Mississippi State University

Joby Bass, University of Southern Mississippi

Dawn Bowen, University of Mary Washington

Tom Chapman, Old Dominion University

Mark DeSocio, Salisbury University

Joni Downs, University of South Florida

Evan Hart, Tennessee Tech University

Tom Howard, Armstrong Atlantic State University

Joshua Inwood, Auburn University

Corey Johnson, University of North Carolina – Greensboro

Lisa Jordan, Florida State University

Robert Kruse, West Liberty University

John Kupfer, University of South Carolina

Hua Liu, Old Dominion University

Scott Markwith, Florida Atlantic University

Esra Ozdenerol, University of Memphis

Shea Rose, University of West Georgia

Luis Sanchez, Universidad de Puerto Rico

Jason Senkbeil, University of Alabama

Tony Stallins, Florida State University

Catherine Veninga, College of Charleston

Johnathan Walker, James Madison University

Mark Welford, Georgia Southern University

Officers, Association of American Geographers

President: **Carol Harden, University of Tennessee**
Vice President: **Kenneth Foote, University of Colorado – Boulder**
Secretary: **Lisa Harrington, Kansas State University**
Treasurer: **Nancy Wilkinson, San Francisco State University**
Past President: **John Agnew, University of California – Los Angeles**
Executive Director: **Doug Richardson, Association of American Geographers**

SEDAAG Honors Committee

Ross Meentemeyer, Chair, University of North Carolina – Charlotte
Maria Fadiman, Chair Elect (2010), Florida Atlantic University
David Holt, University of Southern Mississippi
Jeff Popke, East Carolina University
Jennifer Speights-Binet, Samford University

World Geography Bowl Committee

Laurence W. Carstensen, Chair, Virginia Tech University
Thomas Bell, University of Tennessee & Western Kentucky University
Jamison Conley, West Virginia University
Dawn M. Drake, University of Tennessee
Dennis Edgell, University of North Carolina – Pembroke
Margaret Gripshover, Western Kentucky University
Jeffrey Neff, Western Carolina University
Harry Trendell, Kennesaw State University

The Grassroots Gringos & The South Knoxville Old-Time Orchestra with guest artist, Carol Harden

Lily Ahrens
Ian Feathers
John Kerns
Sam McCamey
Benjamin Shultz
Hunter Terrell
Matthew Valente

Program at a Glance

Sunday November 22, 2009

Field Trips

- 9:00am to 6:00pm Physical & Human Geography of the Great Smoky Mountains: Cades Cove (\$35)
Henri Grissino-Mayer, University of Tennessee
Meet at Walnut Ave. Entrance (by Starbucks) at 8:45am
- 11:00am to 6:00pm Museum of Appalachia (\$45)
John Reel, University of Tennessee
Meet at Walnut Ave. Entrance (by Starbucks) at 10:45am
- 12:00pm to 5:00pm Wine & Cheese of East Tennessee (\$30)
Dawn M. Drake & Jorene Hamilton, University of Tennessee
Meet at Walnut Ave. Entrance (by Starbucks) at 11:45am
- 1:00pm to 6:00pm The Little River that Could (\$25)
Carol Harden, University of Tennessee
Meet at Walnut Ave. Entrance (by Starbucks) at 12:45pm
- 1:00pm to 4:00pm Walking Tour of Downtown Knoxville (\$5)
Jack Neely, *Metro Pulse*
Meet in Hilton Lobby (by hotel registration) at 12:45pm

SEDAAG Registration

8:30am to 9:30am and 3:00pm to 6:30pm on the Mezzanine

Paper Presentation Uploading

3:00pm to 6:30pm in the Boardroom
Please bring your presentations for uploading at least four hours before your session

World Geography Bowl Registration

12:00pm to 1:00pm on the Mezzanine

Business Meetings

8:00am to 10:00am	Executive Committee	Boardroom
11:00am to 4:00pm	Steering Committee	Sequoyah 1

World Geography Bowl Events

1:00pm to 1:30pm	Orientation	Sequoyah 3
1:30pm to 5:30pm	Round Robins	Salon C, D, E, Sequoyah 3, and Hiwassee
5:30pm to 6:00pm	Announcement of winning team & formation of All-Star team	Sequoyah 3

Event Organizers: World Geography Bowl Committee,
chaired by **Laurence W. Carstensen**, Virginia Tech University

Moderators: **Thomas Bell**, University of Tennessee & Western Kentucky University
Joe Guttman, University of Tennessee
Christopher Badurek, Appalachian State University
Kevin Raleigh, University of Cincinnati
Baker Perry, Appalachian State University

Judges: **George Lonberger**, Georgia Perimeter College
Margaret Gripshover, Western Kentucky University
Kendrick Curtis, State of Tennessee, Department of Economic & Community
Development
Ann Fletchall, Western Carolina University
Chriss Smith, Clemson University

Official Scorekeepers: **James E. Young**, Appalachian State University
Arlene Hill, University of Memphis

Participating Teams and State World Geography Bowl Coordinators:

Alabama: **Jason Senkbeil**, University of Alabama
 Florida: **Jennifer Collins**, University of South Florida
 Georgia: **Katherine Hankins**, Georgia State University
 Mississippi: **Jerry Bass**, University of Southern Mississippi
 North Carolina: **Jay Lennartson**, University of North Carolina – Greensboro
 South Carolina: **Jerry Mitchell**, University of South Carolina
 Tennessee: **Micheline van Riemsdijk**, University of Tennessee
 Virginia: **Joe Nicholas**, University of Mary Washington
 West Virginia: **Jan Westerik**, Concord College

Evening Events

6:15pm to 7:45pm	Poster Session 1: Honors & Applications of Geospatial Technologies	Great Smoky BC
6:15pm to 7:45pm	Music by The Grassroots Gringos & The South Knoxville Old-Time Orchestra <i>with guest artist Carol Harden</i>	Mezzanine
6:30pm to 7:45pm	Student Reception (Food and Cash Bar) Organized by Dawn M. Drake, SEDAAG Student Representative	Salon AB

Conference Opening Session

8:00pm to 9:30pm

Salon C

Organizers: Derek Alderman, East Carolina University; Ronald Kalafsky, University of Tennessee and Tyrel Moore, University of North Carolina – Charlotte

Sponsored by: Southern Studies Committee, SEDAAG

Chair: Tyrel Moore, University of North Carolina – Charlotte

Welcome: Derek Alderman, East Carolina University

Introduction of SEDAAG Keynote Speaker: Ronald Kalafsky, University of Tennessee

Keynote Address: **James C. Cobb**, B. Phinizy Spalding Distinguished Professor of History, University of Georgia
"From Mercantilism to Mercedes: The Global South, Then and Now."

Introduction of SEDAAG President's Award Speaker: James O. Wheeler, University of Georgia

SEDAAG President's Award Address: **John Fraser Hart**, University of Minnesota
"From Bolls to Boles"

Award and Closing Remarks: Derek Alderman, East Carolina University

Welcome Reception

9:30pm to 11:00pm

Food and Cash Bar

Salon AB

Monday November 23, 2009

SEDAAG Registration 7:30am to 10:00am on the Mezzanine

Paper Presentation Uploading 7:30am to 10:00am in the Boardroom
Please bring your presentations for uploading at least four hours before your session

Papers, Posters, and Panel Discussions

8:00am to 9:40am	Session 1: Student Honors Papers I: Environmental Geography	Sequoyah 1
	Session 2: Medical Geographies	Salon E
	Session 3: Fluvial Processes & Small Southeastern Watersheds I	Sequoyah 2
	Session 4: Roads & Settlement in the Southern Colonial Backcountry	Salon D
	Session 5: Cultural & Economic Geographies of the American South	Salon A
	Session 6: Heritage, Tourism and Festivals	Hiwassee

	Session 7: Community Engagement: Actively Learning Geography in the Community	Salon B
9:15am to 10:45am	Session 8: Work-Family Relationship Balance	Sequoyah 3
	Poster Session 2: Human Geography	Great Smoky BC
10:00am to 11:40am	Session 9: Student Honors Papers II: Human Geography	Sequoyah 1
	Session 10: Active Learning Swap Shop	Salon B
	Session 11: Geography Pedagogy	Salon E
	Session 12: Making the Best of a Bad Economy	Sequoyah 3
	Session 13: Fluvial Processes & Small Southeastern Watersheds II	Sequoyah 2
	Session 14: Bees & Apiculture in Geography	Salon D
	Session 15: Economic Geography	Salon A
	Session 16: Place & Identity	Hiwassee
	LUNCH	
12:00pm to 1:00pm	SEDAAG Honors Committee Meeting	
12:00pm to 1:00pm	Stand-Alone Geographers Luncheon (<i>meet in Hilton Lobby at 11:45am</i>)	
1:00pm to 2:40pm	Session 17: Sessions in Honor of the 50 th Anniversary of the Department of Geography at Mary Washington I: Physical Geography	Salon E
	Session 18: Political Ecology of Primary Resources in the First World	Sequoyah 2
	Session 19: Poster Madness	Sequoyah 3
	Session 20: Political Geography	Salon D
	Session 21: Right to the City: Activism in Knoxville	Salon B
	Session 22: Geographies of Lakes & Barrier Islands	Salon A
	Session 23: GTU Undergraduate Papers	Sequoyah 1
	Session 24: New Voices in SEDAAG	Hiwassee
2:15pm to 3:45pm	Poster Session 3: Physical Geography	Great Smoky BC
	Session 25: Sessions in Honor of the 50 th Anniversary of the Department of Geography at Mary Washington II: Human Geography	Salon E
3:00pm to 5:00pm	Session 26: Weather & Climate	Sequoyah 1
	Session 27: Geographies of Europe	Sequoyah 2
	Session 28: Forest Geographies	Hiwassee
	Session 29: Political Ecology of Protected Areas & the State	Salon D
	Session 30: Urban Geography	Salon A
	Session 31: Memory, Policy & Economy in the Racialized American South	Sequoyah 3
	Session 32: Frontiers in Biogeography	Salon B

World Geography Bowl

5:45 pm to 7:15pm World Geography Bowl Championship Event Sequoyah 3

World Geography Bowl Chair: **Laurence W. Carstensen**, Virginia Tech University

Moderator: **Laurence W. Carstensen**, Virginia Tech University

Judge: **Jennifer Collins**, University of South Florida

Warm-up Round: Student All-Stars vs. Professional Dream Team

Student All-Star Team: **Members from six preliminary round non-finalist teams**

Professional Dream Team: **Carol Harden**, AAG President; **Derek Alderman**, SEDAAG President; **Jonathan Leib**, SEDAAG Vice President; **Katie Algeo**, SEDAAG Treasurer; **Douglas Gamble**, AAG Regional Councillor – **and a surprise sixth member!**

Championship Round: Top two state teams from the SEDAAG Division compete in a single Championship Round, winner takes all. Trophies to the winning team and Most Valuable Player.

Honors Banquet

7:30pm to 10:00pm

Salon C

Presiding: **Ross Meentemeyer**, Honors Committee Chair

Presentation of Awards

Honors Address: **Carol Harden**, President AAG

Closing Remarks: **Derek Alderman**, President SEDAAG

Tuesday November 24, 2009

Papers and Panel Discussions

8:00am to 9:40am	Session 33: Does the Marriage Work? Geography in Combined Departments	Salon B
	Session 34: Hazards	Sequoyah 1
	Session 35: Student Issues & Concerns	Sequoyah 3
	Session 36: Fluvial Geomorphology	Salon A
	Session 37: GIS & Methods	Sequoyah 2
	Session 38: Cultural & Historical Geographies	Salon D
	Session 39: Monsoons & Cyclones	Hiwassee
	Session 40: Citizenship & Identity	Great Smoky BC

Business Meeting

10:00am to 12:00pm

Salon C

Derek Alderman, Presiding

SEDAAG President, East Carolina University

Adjournment

Have a safe trip home!

Paper, Poster, and Panel Sessions

Note to the presenters:

Each paper time slot is 20 minutes long (15 minutes for the paper presentation followed by 5 minutes of audience/presenter discussion). Please obey the chairperson's time cues. If you are using the digital projector and have not already emailed your presentation to the technical advisor, please bring your file to the Boardroom for loading onto the conference laptops at one of the designated times. The technical advisor will be available on Sunday from 3:00pm to 6:30pm and Monday from 7:30am to 10:00am. Please bring your presentation to the technical advisor at least four hours before your session. Those who have emailed presentations should verify that the presentation has been uploaded by stopping by the Boardroom during the designated times. If your presentation is not pre-loaded, please arrive at the room 10 minutes prior to the beginning of your session.

Sunday, 6:15pm – 7:45pm

Poster Session 1 - Honors/Applications of Geospatial Technologies

Great Smoky BC

Tyler Belcher, Andy Stivers, Joseph McAloon, and Jessica McCarty, University of Louisville. ***A Remote Sensing Approach to Monitoring Industrial Forests in Butler County, Alabama.***

Jessica Beres, Marshall University. ***Comparison of WRF Model Outputs and MODIS Image Products for Cloud Presence for the High Latitudes: A Case Study.***

Cynthia Berlin*, Gregory Chu*, Angela Smith** and Tim Sprain*** (*University of Wisconsin-La Crosse, **Central High School, Wisconsin; ***Lincoln Middle School, Wisconsin). ***Using Public Domain Software Programs in the Development of a K-12 Curriculum.***

Nicholas Campiz, University of Florida. ***Resisting Financial Contagion: The Faroe Islands and Financial Turbulence in the North Atlantic.***

Haley Cleckner, East Carolina University. ***Spatial Modeling of Mosquito Abundance Using GIS in Chesapeake, Virginia.***

Laura Coppola, University of North Carolina – Charlotte. ***Textile Mills of Cabarrus County, North Carolina.***

Thomas Crawford, East Carolina University. ***Mountains of Light: Classification and Visualization of the Urban to Rural Continuum for the Conterminous U.S.***

Richard Curran and Yong Wang, East Carolina University. ***North Carolina View.***

Tina Delahunty and Jack Phelps, Texas Tech University. ***User Friendly Applications of Free Remote Sensing Software Packages for Elementary School Teachers.***

Monica Dorning, University of North Carolina – Charlotte. ***Predicting Urbanization - Conservation Conflicts at the Edge of Metropolis.***

Brian Everitt and Shrinidhi Ambinakudige, Mississippi State University. ***A Markov Chain Model in GIS to Analyze Tornado Occurrences in Mississippi.***

Astrid Gonzalez, Arturo Quintanar, Rezaul Mahmood, Adriana Beltran-Przekurat, and Roger Pielke, Western Kentucky University. ***Sensitivity of MMS and RAMS Meso-scale Models to Soil Moisture Variations.***

Stephanie Hill, East Carolina University. ***Exploratory Analysis of Storm Generated 'Wave Events' from 1997 - 2007 at Duck, NC.***

Jordan Lieberman and Thomas Mote, University of Georgia. ***Comparison of MODIS LST and SSM I Melt Detection Products on the Greenland Ice Sheet.***

Calvin Lim, Mississippi State University. ***The Mass Migration Induced by Hurricane Katrina: A Study on Socio-economical Effects on Metropolitan Areas Selected by Refugees.***

Hua Liu, Old Dominion University. ***Multi-temporal Analysis of the Relationships between WNV Dissemination and Environmental Variables in Indianapolis, Indiana.***

Robbie Munroe, East Carolina University. ***ENSO Forced Changes in Precipitation Distributions and Related Global Circulation Patterns.***

Brandy Saffell and Heather Gamper, Florida State University. ***A Geostatistical Approach to Describe the Dynamics of the Distribution of an Ecologically Important Scale Insect in the Tropical Montane Oak Forest of Mexico.***

Shih-Lung Shaw, University of Tennessee. ***A Space-time GIS for Tracking and Analyzing Individual Activities.***

Kunwar Singh, University of North Carolina – Charlotte. ***Fusion of LIDAR and Landsat Data for Regional-scale Mapping of Spectrally Similar Land Cover Along Urban-Exurban Gradients.***

Ryan Theel and John Rodgers, Mississippi State University. ***Mississippi and Alabama Barrier Island Migration 1990 to 2005 as Measured by Landsat Satellite Imagery.***

James Thompson, Stuart Foster and Rezaul Mahmood, Western Kentucky University. ***Site Identification and Selection for the Kentucky Mesonet.***

Jacob Turner and Christopher Badurek, Appalachian State University. ***GIS Modeling to Improve Identification and Classification of Carolina Bays along the Carolina Coastal Plain.***

M.J. Valente, S.P. Horn and M.L. Taylor, University of Tennessee. ***The Reliability of AMS Radiocarbon Dating of Nymphaea Macrofossils for Chronological Control of Pond Profiles in Cuatrociénegas.***

Chandler White*, Luke Marzen*, John Glasier**, Bill Deutsch*, Wendy Seesock*, Eric Reutebuch* and Dick Bronson** (*Auburn University and **Lake Watch of Lake Martin). ***Close Range Hyperspectral Remote Sensing of Lake Eutrophication at Lake Martin, Alabama.***

Joslyn Zale and Bandana Kar, University of Southern Mississippi. ***A GIS-based Evacuation Model for a Football Stadium.***

Monday, 8:00am – 9:40am

Paper Session 1: Student Honors Papers I – Environmental Geography

Sequoyah 1

Organizer: SEDAAG Honors Committee

Chair: Ross Meentemeyer, University of North Carolina – Charlotte

8:00 – Chris Kaase, Appalachian State University. ***The Effects of Stream Restoration on Woody Riparian Vegetation in the Northwestern North Carolina Mountain region: A Comparative Study of Restored, Degraded and Reference Stream Sites.***

8:20 – Tomas Vaclavik, University of North Carolina – Charlotte. ***Invasive Species Distribution Modeling (iSDM): Do We Need Absence Data and Dispersal Constraints for Accurate Predictions?***

8:40 – Christy Swann, East Carolina University. ***Frequency / Magnitude of Aeolian Events.***

9:00 – Kevin Ash, University of Florida. ***A Cluster of Tropical Cyclone Trajectories in the South Indian Ocean.***

9:20 – Jairus Rossi, University of Kentucky. ***Genes, Bodies, Economies and Environments: How Political Ecology Benefits from Seeing Genetically.***

Paper Session 2: Medical Geographies

Salon E

Chair: Lisa Jordan, Florida State University

8:00 – Andrew Grundstein*, Jan Null**, and Vernon Meentemeyer* (* University of Georgia, **San Francisco State University). ***The Relationship of Weather with the Geography of Infant Mortality in Parked Vehicles.***

8:20 – Dennis Pringle, National University of Ireland/University of Kentucky. ***An Analysis of First Episode Psychosis in South Ulster, 1995-2007: Findings to Date.***

8:40 – Heather A. Smith*, Thad Dixon*, Tom Ludden*, Paul McDaniel*, Ramon Concepcion-Torres*, Owen Furuseth*, Michael Dulin**, Brisa Urquieta De Hernandez**, and Hazel Tapp** (*University of North Carolina – Charlotte, ** Carolina Medical Center). ***Merging the Geographic and the Medical: Conducting Collaborative Research to Improve Primary Care Access for the Hispanic Community in Charlotte, NC.***

9:00 – Dawn M. Drake, University of Tennessee. ***Looking at Physician Maldistribution Using Service Areas: The Case of Retina Specialists.***

9:20 – Lisa Jordan and Poon Rollinson, Florida State University. ***Geographic Disparities in Contraceptive Needs and Services in the United States.***

Paper Session 3: Fluvial Processes and Small Southeastern Watersheds I

Sequoyah 2

Organizers and Chairs: L. Allan James, University of South Carolina; Scott Lecce, East Carolina University; Lisa Davis, University of Alabama

8:00 – Carol Harden*, Keri Chartrand**, Erich Henry*** (*University of Tennessee, **Tennessee Valley Authority, ***Blount County Soil Conservation District). ***Bank Erosion Dynamics of Southern Appalachian Headwater Streams.***

8:20 – David Leigh, University of Georgia. ***Morphology and Channel Evolution of Small Streams in the Southern Blue Ridge Mountains of Western North Carolina.***

8:40 – Dan Royall, University of North Carolina – Greensboro and Lisa Davis, University of Alabama. ***In-Channel Alluvial Benches in Small Watersheds: Examples from the Southern Piedmont.***

9:00 – B. Smucgыз, A. Clayton and Z. Comarova, Georgia State University. ***Comparison of Changes in Runoff and Channel Morphology as a Consequence of Urbanization for Three Chattahoochee River Subbasins, Georgia, USA.***

Paper Session 4: Roads and Settlement in the Southern Colonial Backcountry Salon D

Organizer and Chair: G. Rebecca Dobbs, University of North Carolina

8:00 – Rebecca Dobbs, University of North Carolina. ***The Backcountry's "Urban Revolution" and Indian Roads: the Indian Trading Path and Town Development in the North Carolina – Piedmont.***

8:20 – David Southern, Duke University Press. ***How a Backcountry Entrepot Developed at the Site of a Pre-Columbian Village.***

8:40 – Tom Magnuson, Trading Path Association. ***Finding Old Infrastructure: Field-Based Research and the Southern Backcountry.***

9:00 – Dale Loberger, ESRI, Inc. ***Building a GIS Model to Re-Discover Historic Roads in the Carolina Backcountry.***

Discussant: Tom Howard, Armstrong Atlantic State University

Paper Session 5: Cultural and Economic Geographies of the American South Salon A

Chair: Susan Walcott, University of North Carolina – Greensboro

8:00 – Doug Heffington, Steve Ward, Megan Sutton McClure, Middle Tennessee State University and Radnor Lake State Natural Area. ***The Radnor Lake Project: Coalescence of Geography, History and Archeology.***

8:20 – John McEwen, University of North Carolina – Greensboro. ***Waffle House and Huddle House in the Cultural South.***

8:40 – Amanda Fickey, University of Kentucky. ***Red Bird Mission Craft Program: A Case Study of Moral Economy.***

9:00 – Jonathan Kozar, University of North Carolina – Charlotte. ***Did you Reboot?: The Metropolitan Distribution and Growth of the Computer Service Industry in the South, 1998 to 2006.***

9:20 – Susan Walcott, University of North Carolina – Greensboro. ***Sunset or Rebirth of an Industry? Furniture Foothills Factory Case Studies.***

Paper Session 6: Heritage, Tourism and Festivals

Hiwassee

Chair: Deborah Thompson, University of Kentucky

8:00 – Yang Yang, University of Florida. *Analysis of Spillover Effects in Tourism Flows.*

8:20 – Matthew Watterson, East Carolina University. *The Place of the Market and Tourism in Preserving Heritage Spaces in New Bern, North Carolina.*

8:40 – Lily Ahrens and Ingrid Luffman, University of Tennessee. *The Entertainer's Perspective: Evaluating the Success of Asheville, North Carolina's Bele Chere Festival (1979-2008).*

9:00 – Benjamin Blandford, University of Kentucky. *Derby Cruising in Louisville, KY: Historical Origins of a Contested Urban Festival.*

9:20 – Deborah Thompson, University of Kentucky. *Bluegrass Hegemony and the Struggle for Old Time Ascendancy in Eastern Kentucky.*

Panel Discussion 7: Community Engagement: Actively Learning Geography in the Community

Salon B

Sponsor: Stand Alone Geographers (SAGE) of SEDAAG

Panel Co-Chairs: Helen Ruth Aspaas, Virginia Commonwealth University and George Lonberger, Georgia Perimeter College

Panel Members: Derek Alderman, East Carolina University; Helen Ruth Aspaas, Virginia Commonwealth University; George Lonberger, Georgia Perimeter College; Douglas Oetter, Georgia College and State University; Eric Spears, Mercer University

Panel Discussion 8: Work-Family Relationship Balance

Sequoyah 3

Sponsor: SEDAAG Committee on the Status of Women in Geography

Organizer and Chair: Esra Ozdenerol, University of Memphis

Panel Members: Toni Alexander, Auburn University; Vanessa Cayson, University of Memphis; Ann Oberhauser, West Virginia University; Esra Ozdenerol, University of Memphis

Monday, 9:15am – 10: 45am

Poster Session 2: Human Geography

Great Smoky BC

Cem Akkus, University of Memphis. ***Indian Woods, North Carolina: Mapping Historical artifacts through GIS.***

Patrick Barrineau, Auburn University. ***Protecting Our Coast: Strategies of Responsible Urban Design for the Southeastern Coast.***

Charlynn Burd, University of Tennessee. ***Tobacco Growers and Production in the South.***

Philip Chaney, Auburn University. ***Mobile Home Resident Behavior During the Super Tuesday Tornado Disaster at Lafayette, TN.***

James Dixon, Brisa Urquieta de Hernandez, Heather Smith, Owen Furuseth and Michael Dulin, University of North Carolina – Charlotte. ***A Mixed-Methods Approach to Increase Healthcare Access for the Hispanic Population.***

Ursula Garfield, Michal Lynn Jones, Kevin Ash and Ann Foster, University of Florida. ***Potential Human Impacts on Atlantic Sturgeon Habitat.***

Kenneth Gregory, University of Southern Mississippi. ***Cultural Trends in Necrogeography.***

Theodore Goudge, Jacob Govig and Matthew Jundy, Northwest Missouri State University. ***The Geography of College Football Player Origins: Division III.***

Theodore Goudge, Brett Johnson, Brooks Swanson and Kyle Davis, Northwest Missouri State University. ***The Geography of Major College Baseball Player Origins***

William Graves, University of North Carolina – Charlotte. ***Still a "Variety Vacationland?" Measuring Historical Changes in Vacation Costs for North Carolinians.***

Mark Horner, Florida State University. ***An Exploration of Uncertainty in Urban Commute Metrics: A Simulation Study in Tallahassee.***

Orrin Konheim, George Mason University. ***Is Lynchburg the Most Disadvantaged City in the Country Due to Lack of Interstate Access?***

Maggie Kovach, University of North Carolina. ***Assessing the Climate Information Gap in the Public Health Sector.***

Heidi Lannon and Joe Bryant, Santa Fe College. ***Mental Mapping and Gender Peculiarities.***

Heather Lee and Lawrence Grossman, Virginia Tech. ***The Food Retail Hierarchy and Food Import Dependency in a Dominican Town.***

Jennifer Mann, East Carolina University. ***The Coast as a Vernacular Region: Using GIS to Analyze and Visualize Regional Identity.***

Paul McDaniel, University of North Carolina – Charlotte. ***Uncovering Ethnic Concentrations in Charlotte, North Carolina: Spatial Analysis of Hispanic and Latino Settlement.***

Nathan McKinney and Klaus Meyer-Arendt, University of West Florida. ***The Untold Story of Hurricanes and Human Life: Direct and Indirect Mortality in Florida Following the 2004 Tropical Cyclones.***

Yuri Potwasky and Christopher Badurek, Appalachian State University. ***A Comparative Remote Sensing Analysis of Urbanization and Peri-urban Agriculture of Southeast Asian Cities.***

Chad Pyles, Marshall University. ***A Spatial Analysis of Violent Crime and Alcohol in Huntington, WV.***

Bruce Ralston and Yin Ling, University of Tennessee. ***Unidentified Human Remains: Mapping of the Nation's Silent Mass Disaster.***

Fausto Sarmiento, University of Georgia. ***Fulbright Scholar Awards: A World of Opportunities for Faculty and Professionals.***

Brandon Saunders, Austin Chamberlain and Christopher Badurek, Appalachian State University. ***GIS and Mixed Methods Analysis of Rural Gentrification Impacts on Rural Communities in Watauga County, NC.***

Ronald Schumann and John Chesser, University of North Carolina – Charlotte. ***The Development of a Hispanic Enclave in Southwest Charlotte.***

Douglas Shoemaker, University of North Carolina – Charlotte. ***The Human Footprint: Quantifying Spatio-temporal Patterns of Per-capita Land Consumption in a Rapidly Growing Metropolitan Region.***

Hilary Smith, University of Florida. ***Livelihood Change Among the Basarwa in Mababe, Botswana.***

Phil Steinberg*, Sandra Fabiano**, Rob Shields***, Mauro Caraccioli*, (*Florida State University, **Independent Scholar, ***University of Alberta). ***Frozen Ocean or Melted Land? Competing Materialities of the Northwest Passage.***

Jamie Strickland, Tyrel Moore and Gerald Ingalls, University of North Carolina – Charlotte. ***An Update on Textile Mill Reuse in Charlotte: Progress and Pause.***

Huang Zhuojie and Timothy Fik, University of Florida. ***Understanding Urban Landscape of Housing with Real Estate Submarkets: A Spatial Model Approach.***

Monday: 10:00am – 11:40am

Paper Session 9: Student Honors Papers II – Human Geography

Sequoyah 1

Organizer: SEDAAG Honors Committee

Chair: Maria Fadiman, Florida Atlantic University

10:00 – Ryan Covington, East Carolina University. ***So, What do we do now? A Critical Analysis of ENGO Climate Campaigns.***

10:20 – Conor Harrison, East Carolina University. ***High Bills, Energy Efficiency and Isolation: Living with Fuel Poverty in Eastern North Carolina.***

10:40 – Sarah Schwartz, University of South Carolina. ***Unprotected Sex in the Midst of an HIV Epidemic: How Understanding the Choice Could Improve Swaziland's Condom Campaigns.***

11:00 – Matthew Mitchelson, University of Georgia. ***Incarceration-as-Migration: Spatial Analysis of Georgia's Prison Flows.***

11:20 – Benjamin Shultz, University of Tennessee. ***Space in the Digital Age: A Case Study of the Online DiY Phenomenon.***

Panel Session 10: Active Learning Swap Shop

Salon B

Sponsors: SEDAAG Education Committee and AAG EDGE Project

Chair: Jennifer Collins, University of South Florida

Panel Members: Jennifer Collins, University of South Florida; Jennifer Rahn, Samford University; Lisa Jordan, Florida State University

Paper Session 11: Geography Pedagogy

Salon E

Chair: Johnathan Walker, James Madison University

10:00 – Esther Long Ratajeski and Verdie Craig, Morehead State University. ***Time Over Space? An Examination of Why Students Take Online Courses at a Regional State University.***

10:20 – Ola Johansson, University of Pittsburgh at Johnstown. ***Teaching Energy: A Neglected Endeavor in Geography?***

10:40 – James Tyner, Kent State University. ***A Politics of Education through the Teaching of Political Geography: Lessons from the Cambodian Genocide.***

11:00 – Stephen Birdsall, University of North Carolina. ***Holograms, the U.S. Constitution, and Teaching Regional Geography.***

11:20 – Johnathan Walker, James Madison University. ***The Family Geography Project: Creating Geographies and Spatial Learning.***

Panel Session 12: Making the Best of a Bad Economy

Sequoyah 3

Organizers: Derek Alderman, East Carolina University and Douglas Gamble, University of North Carolina – Wilmington

Chair: Douglas Gamble, University of North Carolina – Wilmington

Panel Members: Laurence Carstensen, Virginia Tech; Eric Fournier, Samford University; Klaus Meyer-Arendt, University of West Florida; Burrell Montz, East Carolina University; Susan Roberts, University of Kentucky; Jeff Rogers, University of Tennessee-Martin; Bill Strong, University of North Alabama

Paper Session 13: Fluvial Processes and Small Southeastern Watersheds II

Sequoyah 2

Organizers and Chairs: L. Allan James, University of South Carolina; Scott Lecce, East Carolina University; Lisa Davis, University of Alabama

10:00 – Kristen Blanton, Joann Mossa, John Kiefer, Darina Palacio and William Wise, University of Florida. ***Bankfull Indicators in Small Streams in Peninsular Florida: Reliability and Relations with Hydrology.***

10:20 – Allan James and Kirsten Hunt, University of South Carolina. ***Analyzing Small Watersheds with High-Resolution Topographic Data: The LIDAR Side of Mapping Headwater Streams.***

10:40 – Jonathan Phillips, University of Kentucky. ***Amplifiers, Filters, and Geomorphic Responses to Climate Change in Kentucky Rivers.***

11:00 – Robert Pavlowsky*, Scott Lecce**, Gwenda Schlomer*, Derek Martin*, (*Missouri State University, **East Carolina University). ***Legacy Hg-Cu Contamination of Active Sediments in Gold Hill Mining District, North Carolina.***

Paper Session 14: Bees and Apiculture in Geography

Salon D

Organizer and Chair: Tony Stallins, Florida State University

10:00 – Tony Stallins, Florida State University. ***The New Geographies of Apiculture.***

10:20 – Heather Gamper, Florida State University. ***Offsetting Deforestation: Honeydew Beekeeping in Rural Veracruz, Mexico.***

10:40 – Kelly Watson, Florida State University. ***Tupelo Honey Production in Northwest Florida: Livelihood Preservation and Forest Conservation in a Changing Rural Landscape.***

11:00 – ***Honey Tasting: Selected Unifloral Forest Honeys of Southeastern U.S.***

Paper Session 15: Economic Geography

Salon A

Chair: Sharon Cobb, University of North Florida

10:00 – Mario Mighty, University of Florida. ***Impacts of the Closure of the Jamaican Export Banana Market: Adaptive Responses of Banana Farmers.***

10:20 – Ronald Kalafsky, University of Tennessee. ***Market Intelligence and Entry: the Case of US Machine Tool Manufacturers in China.***

10:40 – James Wheeler, University of Georgia. ***Salient Spatial Characteristics of US Manufacturing Decline, 2000-2008.***

11:00 – Sharon Cobb and David Jaffee, University of North Florida. ***Lost in Space: The Changing Economic Geography of Ports and the Spatial Dispersion of Economic Activity.***

Paper Session 16: Place and Identity

Hiwassee

Chair: Katherine Hankins, Georgia State University

10:00 – Tim Vatovec, University of Kentucky. ***Towards a Queer Heteropology as a Framework for Study.***

10:20 – Mitchell Snider, University of Kentucky. ***Masculinities in KY: Perspectives of Rural Migrant Farm Workers.***

10:40 – Owen Furuseth, University of North Carolina – Charlotte. ***Latino Place-Making in Rural North Carolina.***

11:00 – Katherine Hankins, Georgia State University and Andy Walter, University of West Georgia. ***Faith-Based Gentrification.***

The Stand Alone Geographers (SAGE) of SEDAAG will be meeting for lunch from 12:00pm to 1:00pm

Please meet in the Hilton lobby near the hotel reception desk at 11:45am

Monday, 1:00pm – 2:40pm

Paper Session 17: Sessions in Honor of the 50th Anniversary of the Department of Geography at Mary Washington I – Physical Geography

Salon E

Organizer and Chair: Dawn Bowen, University of Mary Washington

1:00 – Stuart Geiger, Dewberry. ***Influence of Rock Glaciers on Stream Hydrology in the La Sal Mountains, Utah.***

1:20 – Joseph Nicholas, University of Mary Washington. ***Temperature Trends Relative to Rock Glaciers in the La Sal Mountains, Utah.***

1:40 – Peter George Chirico, US Geological Survey. ***Geomorphology of Diamondiferous Alluvial Deposits of the Birim River Valley in Ghana, West Africa.***

2:00 – Jacqueline Gallagher, University of Mary Washington ***Lake Okeechobee: What's the Story?***

2:20 – Burrell Montz, East Carolina University. ***"You Can't Always Get What You Want": Response to Severe Weather Warnings.***

Paper Session 18: Political Ecology of Primary Resources in the First World

Sequoyah 2

Organizer and Chair: Brian Grabbatin, University of Kentucky

1:00 – Hugh Deaner, University of Kentucky. ***Revisiting Silent Violence: Leveraging Michael Watts to Research the Political Ecology of Oil in the United States***

1:20 – John Taylor Shelton, University of Kentucky. ***(Re)placing Resources: Capital, Space and Electronic Waste.***

1:40 – Brian Grabbatin, University of Kentucky. ***A New Ecology for Sweetgrass (Muhlenbergia filipes): Harvesting Practices and Land Management along the South Carolina Coast***

2:00 – Thomas Howard, Armstrong Atlantic State University. ***This Contested Terrain is not a Metaphor: Coal vs. Wildlife Preservation in the Cumberland Mountains.***

Discussant: Brent McCusker, University of West Virginia

Panel Discussion 19: Poster Madness

Sequoyah 3

Sponsors: SEDAAG Education Committee and AAG EDGE Project

Chair: Jennifer Collins, University of South Florida

Panel Members: Christopher Badurek, Appalachian State University; Jennifer Collins, University of South Florida; Jennifer Rahn, Samford University

Paper Session 20: Political Geography

Salon D

Chair: Keith Bell, Volunteer State Community College

1:00 – Edward Heath Robinson, The State University of New York at Buffalo. ***An Initial Evaluation of the Geopolitical Ontology in True Knowledge's Answer Engine.***

1:20 – Daniel McGowin, Florida State University. ***It Has to Start Somewhere: Place, Opposition and Presidential Elections in Taiwan.***

1:40 – Nicholas Quinton, Florida State University. ***Regionalism and Elections in Tennessee.***

2:00 – Gerald Webster, University of Wyoming. ***Custer May Have Died for Our Sins But He Did Not Go Away.***

Panel Discussion 21: Right to the City: Activism in Knoxville

Salon B

Organizer and Chair: Peter Hossler, University of Georgia

Panel Members: Peter Hossler, University of Georgia; Chris Woodhull, Tribe One; Patricia Robledo, East Tennessee Civil Rights Committee; Linda Rust, Homeless Advocate, University of Tennessee

Paper Session 22: Geographies of Lakes and Barrier Islands

Salon A

Chair: Joanne Halls, University of North Carolina – Wilmington

1:00 – Sally Horn and Kurt Haberyan, University of Tennessee. ***From Shore to Summit: Paleolimnological Records Across Costa Rican Ecosystem Regions.***

1:20 – Prasad Pathak, University of North Carolina – Greensboro. ***Quantifying Relationships Between Landscape Factors and Lake Primary Productivity in Arctic Alaska using Remote Sensing Techniques.***

1:40 – David Shankman, University of Alabama. ***Future Flood Risk in China's Poyang Lake Region.***

2:00 – Amber Ignatius, University of Georgia. ***Cumulative Impacts of Small Reservoirs in the Apalachicola-Chattahoochee-Flint River Basin.***

2:20 – Joanne Halls and David Johnson, University of North Carolina – Wilmington. ***An Investigation of Barrier Island Topographic Characteristics Using LIDAR and GPS Mapping Techniques.***

Paper Session 23: GTU Undergraduate Papers

Sequoyah 1

Chair: Dawn M. Drake, University of Tennessee

1:00 – Leigh Ann West, Ana Issela Rios Sanchez, and David Salisbury, University of Richmond. ***The Importance of Biodiversity, Subsistence and Gender in Amazonian Home Gardens.***

1:20 – Fritz Hoogakker, Roger Rios Arenas and David Salisbury, University of Richmond. ***Amazon Fisheries: Threats, Uses and Dynamics.***

1:40 – Carlo Fortner, University of Southern Mississippi. ***The Cultural Diffusion of Asian Martial Arts: A Brief History of the Development of Okinawan Karate.***

2:00 – Wendy Griffioen, University of Southern Mississippi. ***Potential Costs of Implementing the Proposed Municipal Zoning Changes Post-Hurricane Katrina: A Case Study of the Coastal Region in Long Beach, Mississippi.***

2:20 – Sarah Ann Moncelle, Appalachian State University. ***Political Geography 2.0: Informing Local Political Action with WebGIS.***

Paper Session 24: New Voices in SEDAAAG

Hiwassee

Organizer: Derek Alderman, East Carolina University

Chair: Ronald Mitchelson, East Carolina University

1:00 – Parama Roy, Georgia State University. ***Civic Engagement in Milwaukee's Green Space Production: Countering Neoliberalization of Nature.***

1:20 – J.C. Senkbeil*, D. M. Brommer*, P.G. Dixon**, M.E. Dixon, ** K. Sherman-Morris** (*University of Alabama, **Mississippi State University). ***Methods of Assessing the Perceived Threat Location of Hurricane Evacuees.***

1:40 – Daehyun Kim*, David Cairns**, Jesper Bartholdy***, (*University of Kentucky, **Texas A & M University, ***University of Copenhagen). ***Environmental Controls on Multiscale Spatial Pattern of Salt Marsh Vegetation.***

2:00 – Jason Oretgren*, Paul Knapp**, Justin Maxwell**, Pete Soule*** (*University of West Florida, **University of North Carolina – Greensboro, ***Appalachian State University). ***Homogenous Summer Drought Regions in the Contiguous U.S.A. and their Relative Susceptibility to Multi-year Sustained Drought Events.***

2:20 – Brian Rizzo, University of Mary Washington. ***Retooling Historic Data with ArcGIS.***

Monday, 2:15pm – 3:45pm

Poster Session 3: Physical Geography

Great Smoky BC

Sanchayeeta Adhikari, University of Florida. ***Spatio-temporal Change Analysis of Land-use and Land-cover in and around Bannerghatta National Park, India.***

David Austin, University of North Alabama and Justin Hart, University of Alabama. ***Radial Growth Responses of Three Hardwood Species to Small Canopy Openings: An Intra- and Interspecific Examination.***

Matthew Batina and Carl Reese, University of Southern Mississippi. ***A Holocene Pollen Record Recovered from a Guano Deposit: Round Spring Cavern, Missouri.***

Sarah Blankenship, Henri Grissino-Mayer and Jan Simek, University of Tennessee. ***High-precision Dating of Saltpeter Mine Sites in the Southeastern US Using Dendrochronology.***

Bobby Braly*, Shannon Koerner*, Henri Grissino-Mayer*, Lynne Sullivan*, Edward Cook**, (*University of Tennessee, **Columbia University). ***Dendrochronological Approaches to Late Prehistoric Archaeology in Tennessee.***

David Brommer and Jason Senkbeil, University of Alabama. ***The Microclimate of Bryant-Denny Stadium.***

Erin Bunting, University of Florida. ***Anthropogenic Landscape Changes in Florida from 1974 – 2004.***

Georgina DeWeese*, Andrew Maloof*, Henri Grissino-Mayer**, Michelle Carter*, (*University of West Georgia, **University of Tennessee). ***Wildfires as a Product of Multi-Decadal Oscillations in Central Appalachian Yellow Pine Stands.***

Jeremy Diem, Georgia State University. ***Atmospheric Characteristics Conducive to High-Ozone Days in the Atlanta Metropolitan Area.***

Sara Evans, Sarah Essing and Kimberly Nelson, University of Louisville. ***An Analysis of Reforestation at Three Sites in Greenbrier County, West Virginia.***

Christopher Fuhrmann, University of North Carolina. ***Using Atmospheric Trajectories to Study Complex Winter Storms: Two Case Studies from Central North Carolina.***

Timothy Fullman, Cerian Gibbes, Mike Hyman, Dan Neal, Dadan Xu, University of Florida. ***Habitat Use by Large Mammals Along the Chobe Riverfront, Chobe National Park, Botswana.***

Grant Harley, Henri Grissino-Mayer and Sally Horn, University of Tennessee. ***Vegetation Dynamics of Endangered Pine Rockland Communities in the Lower Florida Keys.***

Evan Hart, Tennessee Tech University. ***Sinkhole Flooding in Cookeville, TN 1998 – 2009.***

Won Hoi-Hwang, Marshall University. ***The Role of Urban Vegetation on Surface Temperature of its Surrounding Areas.***

David Kramar, Bill Carstensen and Jim Fraser, Virginia Tech. ***Spatial Variation of Mercury in the Virginia Bald Eagle Population.***

Lindsay Kvasnak and Gabrielle Katz, Appalachian State University. ***Biogeography of Dogwood Anthracnose Disease in Northwestern North Carolina, USA.***

Lisa LaForest*, Henri Grissino-Mayer*, Charles Lafon**, William Flatley** (*University of Tennessee, **Texas A&M University). ***Stand Dynamics of Xeric Mixed Hardwood / Pine Forests, Great Smoky Mountains National Park.***

Sanjay Lamsal, Qingmin Meng and Ross Meentemeyer, University of North Carolina – Charlotte. ***Spatial Variation of Above-ground Forest Biomass in Heterogeneous Landscapes.***

John L'Heureux, Appalachian State University. ***Atmospheric Influences on New Snowfall Characteristics Associated with Northwest Flow Snowfall in the Southern Appalachians.***

Yanan Li and Henri Grissino-Mayer, University of Tennessee. ***The Impact of Oceanic-atmospheric Oscillation Change in the Southeastern US Abstracted from Tree-ring Network Data.***

T.J. Malone and Joshua Durkee, Western Kentucky University. ***A Comparative Analysis between Convective and Non-convective High-wind Events.***

Jacob McDonald and David Leigh, University of Georgia. ***Geomorphic Evolution of a Montane Peatland at Whiteoak Bottoms, Nantahala River Valley.***

Claudia Monzon Alvarado, University of Florida. ***Multi-scale Approach of Fires and Deforestation in Laguna del Tigre National Park, Guatemala.***

Jonathan Phillips*, Alice Turkington*, and Daniel Marion** (*University of Kentucky, **USDA Forest Service Southern Research Station, Arkansas). ***Trees as Geomorphic Agents in Upland Environments.***

Monica Rother and Henri Grissino-Mayer, University of Tennessee. ***The Spatial and Temporal Interconnectivity of Fire Regimes Across Land-ownership Boundaries in Northwestern New Mexico.***

Mark Spond, Henri Grissino-Mayer, Sally Horn, and Kevin Russell, University of Tennessee. ***Analyzing Repeated Photographs (1947-1981) by the Eminent Ecologist Alton A. Lindsey at El Malpais National Monument, New Mexico, USA: A 21st Century Perspective.***

Ryan Torres, Western Kentucky University. ***Urbanization and its Impacts on Precipitation Around Three Urban Centers in the Kentucky-Ohio River Valley.***

Saskia van de Gevel*, Philip White*, Mark Spond**, Henri Grissino-Mayer** (*Appalachian State University, **University of Tennessee). ***Chestnut Graveyard: Forest Succession in the Absence of *Castanea Dentata*, Bluff Mountain, North Carolina.***

Jane Marie Wix, Nicholas Rodgers and Rezaul Mahmood, Western Kentucky University. ***Comparison of Eastern Kentucky and West Virginia Summer Flash Flood Rainfall Events.***

Andrea Wolf, Brian Child and Graham Child, University of Florida. ***Change in Ecosystem Components (Grass, Trees, Large Mammals) on the Chobe Riverfront, Northern Botswana (1965 - 2007).***

Monday, 3:00pm – 5:00pm

**Paper Session 25: Sessions in Honor of the 50th Anniversary of the
Department of Geography at Mary Washington II – Human Geography**

Salon E

Organizer and Chair: Dawn Bowen, University of Mary Washington

3:00 – Sarah Hinman, Idaho State University. ***The Urban Landscape and Gender in the Interior West: Preliminary Findings from the Mapping of Women in Helena, Montana, 1884-1930.***

3:20 – Richard Russo, University of Maryland. ***Local Food Strategies in the Agricultural Transitions of the Post-Tobacco Southeast: A Status Report.***

3:40 – Stephen O'Connell, University of Mary Washington. ***Setting the Stage: Cultural Landscape Creation and Evolution Along National Park Access Roads.***

4:00 – Jonathan Leib, Old Dominion University. ***Identity, Banal Nationalism and North American License Plates.***

4:20 – Dawn Bowen, University of Mary Washington. ***Mennonites and Migration: A View of a 1940s Resettlement Program.***

4:40 – Stephen Hanna, University of Mary Washington. ***Mapping Memories of Slavery and Emancipation: John Washington's Map of Civil War Fredericksburg.***

Paper Session 26: Weather and Climate

Sequoyah 1

Chair: David Keelings, University of Florida

3:00 – Baker Perry*, Douglas Miller**, Sandra Yuter***, John L'Heureux*, Ginger Kelly* (*Appalachian State University, **University of North Carolina – Asheville, ***North Carolina State University).

Snowfall Patterns and Processes in the Southern Appalachians: Preliminary Results from an Interdisciplinary Field Campaign, 2006-2009

3:20 – Charles Konrad, University of North Carolina. ***Using Large Scale Circulation Indices to Predict the Intensity of Cold Air Outbreaks Over Extended Time Scales Across the Southeastern U.S.***

3:40 – Peter Campana, John Knox, Andrew Grundstein and John Dowd, University of Georgia. ***The 2007-09 Drought in Athens, GA: A Climatological Assessment.***

4:00 – John Dean, Georgia Department of Water Resources. ***Improving Summer Drought Prediction in the Apalachicola-Chattahoochee Flint River Basin with Empirical Downscaling.***

4:20 – Douglas Gamble, University of North Carolina – Wilmington. ***Local-Scale Analysis of the Caribbean Mid-Summer Dry Spell on San Salvador, Bahamas.***

4:40 – David Keelings and Peter Waylen, University of Florida. ***The Stochastic Properties of High Daily Maximum Temperatures.***

Paper Session 27: Geographies of Europe

Sequoyah 2

Chair: Corey Johnson, University of North Carolina – Greensboro

3:00 – Anton Gosar, University of Primorska, Slovenia. ***Managing EU'S Southern Border: The Slovenia - Croatia Dispute.***

3:20 – Toby Martin Applegate, Rutgers University. ***Becoming Erased: Human Rights, Social Exclusion, and State Power in Slovenia.***

3:40 – Meagan Todd, University of Kentucky. ***Inclusion and Exclusion in Memorial Landscapes: The Relocation of the Bronze Soldier Memorial in Tallinn, Estonia.***

4:00 – Georgeta Stoian Connor, University of Georgia. ***Rural Romania: Between Communist Collectivization and Integration into the European Union.***

4:20 – Micheline van Riemsdijk, University of Tennessee. ***The European Blue Card Initiative: Managing Skilled Migration.***

4: 40 – Corey Johnson, University of North Carolina – Greensboro. ***Nature and the Nation-State: The European Water Framework Directive and the De-Territorialization of Environmental Governance.***

Paper Session 28: Forest Geographies

Hiwassee

Chair: Jaclyn Hall, University of Florida

3:00 – John Sakulich*, Justin Hart**, Saskia van de Gevel*** and Henri Grissino-Mayer* (*University of Tennessee, **University of Alabama, ***Appalachian State University). ***Variability of Annual Growth Across the Geographic Range of *Tsuga Canadensis* (L.) Carr.***

3:20 – Justin Hart*, Saskia van de Gevel**, John Sakulich***, Henri Grissino-Mayer*** (*University of Alabama, **Appalachian State University, ***University of Tennessee). ***Effects of Climate and Disturbance on Growth of Eastern Hemlock at its Southern Range Limit.***

3:40 – Ting Liu, Florida State University. ***Mapping Forest Canopy Density in Leon County, Florida.***

4:00 – Matthew Miller, University of Georgia. ***Trends and Impacts of Forest Coverage and Fragmentation in the Georgia Piedmont from 1974 to 2005.***

4:20 – Zachary Taylor, Sally Horn, Claudia Mora, Kenneth Orvis and Lee Cooper, University of Tennessee. ***Paleoecological Evidence of Late-Holocene Forest Expansion in Central South America.***

4:40 – Jaclyn Hall, University of Florida. ***Potential Implications of REDD for a Real Landscape: Case Study of East Usambaras, Tanzania.***

Paper Session 29: Political Ecology of Protected Areas and the State

Salon D

Organizer and Chair: Brian Grabbatin, University of Kentucky

3:00 – Pinki Mondal and Jane Southworth, University of Florida. ***The Role of Government Policies in Protected Area Management: A Case Study from Central India.***

3:20 – Priyanka Ghosh, University of Kentucky. ***The Production of Nature: A Journey from the Yellowstone National Park to the Sundarban Biosphere Reserve.***

3:40 – Allison Harnish, University of Kentucky. ***"It's Better You Don't Go Home": Mapping the State in Zambia's Bbilili and Sichifulo Game Management Areas.***

4:00 – Jonathan Otto, University of Kentucky. ***Sustainable Development and Ecotourism in Chiapas, Mexico: Sustainable or Not?***

4:20 – Chris Van Dyke, University of South Carolina. ***How Far to the Nearest Arsonist? Protecting the State Through Culture in Great Smoky Mountains National Park.***

Discussant: Ed Carr, University of South Carolina

Paper Session 30: Urban Geography

Salon A

Chair: Joe Weber, University of Alabama

3:00 – Russell Smith, Winston-Salem University. ***The Spatial Distribution and Clustering on New Municipalities in North Carolina: 1990-2008.***

3:20 – Byron Smith, University of South Carolina. ***Private Property as a Commons: When does the Public Have a Right to Real Estate not its Own?***

3:40 – Peter Hossler, University of Georgia. ***The Right to the City, Bodies, and the 'Cry and Demand'.***

4:00 – Bradley Bereitschaft, University of North Carolina – Greensboro. ***Assessing the Relationships between Urban Form and Air Quality Using Spatial Metrics.***

4:20 – Madhuri Sharma, University of Tennessee. ***Racial / Ethnic Intermixing in Intra-Urban Space in Columbus, Ohio.***

4: 40 – Joe Weber, University of Alabama and Selima Sultana, University of North Carolina – Greensboro. ***Housing Boom, Urban Sprawl, and the Commuting Transition.***

**Paper Session 31: Memory, Policy and Economy in the Racialized
American South**

Sequoyah 3

Sponsors: SEDAAG Southern Studies Committee and AAG Study of the American South Specialty Group

Organizer: Derek Alderman, East Carolina University

Chair: E. Arnold Modlin Jr., Louisiana State University

3:00 – Derek Alderman, East Carolina University and Robert Brown, Appalachian State University. ***When a New Deal is actually an Old Deal: TVA, Jim Crow and the Social Engineering of Norris, Tennessee.***

3:20 – William O'Brien, Florida Atlantic University. ***State Parks and Jim Crow, or America's Best Idea Meets America's Worst Idea.***

3:40 – Josh Inwood, Auburn University. ***Reconciling the Truth: Legacies of Racial Violence in the American South.***

4:00 – Jeff Popke and Katherine Jones, East Carolina University. ***Re-envisioning Social Space: HOPE VI, Neoliberalization and Urban Politics in Charlotte, NC.***

4:20 – Bobby Wilson, University of Alabama. ***Development of the Black Economy: Separation or Segregation.***

Paper Session 32: Frontiers in Biogeography

Salon B

Organizers and Chairs: John Kupfer, University of South Carolina and Ross Meentemeyer, University of North Carolina – Charlotte

3:00 – John Kupfer, University of South Carolina. ***Advances in Species Distribution Modeling: Applications in Applied Biogeographic Research.***

3:20 – Ross Meentemeyer, University of North Carolina – Charlotte. ***Modeling Spread Dynamics of Infectious Disease: Putting Geography into the Mathematics.***

3:40 – Henri Grissino-Mayer, University of Tennessee. ***Dendrochronology as a Technique in Biogeography for Reconstructing Environmental Processes.***

4:00 – Jerry Griffith, University of Southern Mississippi. ***Evolving Perspective on Land Cover Change and Biogeography.***

4:20 – Scott Markwith, Florida Atlantic University. ***Prospects for Involvement of Biogeographers in Environmental Restoration.***

Tuesday, 8:00am – 9:40am

Panel Discussion 33: Does the Marriage Work? Geography in Combined

Salon B

Departments

Organizers and Chairs: Katherine Hankins, Georgia State University and Andy Walter, University of West Georgia

Panel Members: Crawford Elliott, Georgia State University; Katherine Hankins, Georgia State University; Russ Ivy, Florida Atlantic University; Josh Inwood, Auburn University; Jonathan Leib, Old Dominion University; Andy Walter, University of West Georgia; Mark Welford, Georgia Southern University

Paper Session 34: Hazards

Sequoyah 1

Chair: David Harms Holt, University of Southern Mississippi

8:00 – Rick Crowsey, University of Southern Mississippi. ***When Geography Goes to Court, Will It Get to Testify?***

8:20 – Bandana Kar, University of Southern Mississippi. ***Why Scale Matters: A Hazard Research Perspective?***

8:40 – Charles Paxton, Jennifer Collins and Alicia Williams, University of South Florida. ***Precursors to Southwest Florida Tornado Development***

9:00 – Stephen Sanchagrin and Tom Allen, East Carolina University. ***Hurricane Storm Surge: Spatial Representation and Visualization Using GIS.***

9:20 – David Harms Holt, University of Southern Mississippi. ***Blight Surveying Mississippi's Southern Three Counties: Hurricane Katrina Plus Four.***

Panel Discussion 35: Student Issues and Concerns

Sequoyah 3

Organizer and Chair: Dawn M. Drake, SEDAAG Student Representative, University of Tennessee

Panel Members: Bob Brinkmann, University of South Florida; Dawn M. Drake, University of Tennessee; Glen Harrison, Oak Ridge National Labs; Justin Hart, University of Alabama; Sally Horn, University of Tennessee; Austin Rutledge, University of Tennessee; Graham Tobin, University of South Florida; Micheline van Riemsdijk, University of Tennessee; Donald Zeigler, Old Dominion University

Paper Session 36: Fluvial Geomorphology

Salon A

Chair: Franklin Heitmuller, University of Southern Mississippi

8:00 – Roger Brown and William Frazier, Columbus State University. ***Holocene Paleoenvironmental Investigations of an Abandoned Paleochannel and Meander Scar Feature, Fort Benning, GA.***

8:20 – Derek Martin and Robert Pavlowsky, Missouri State University. ***Analysis of Stream Channel Disturbance Zones.***

8:40 – Jidan Duan, University of Kentucky. ***The Interpretation of Knickpoints along the Big South Fork River System in Southern Kentucky.***

9:00 – Kirsten Hunt, University of South Carolina. ***Use of LiDAR in defining the Urban-Rural Transition Zone in Stream-Section Morphology.***

9:20 – Franklin Heitmuller, University of Southern Mississippi and Nolan Raphelt, Texas Water Development Board. ***The Role of Sediment-Transport Evaluations for Development of Synthetic Instream-Flow Regimes: An Example for the Texas Environmental Flows Allocation Process.***

Paper Session 37: GIS and Methods

Sequoyah 2

Chair: Patricia Wurth, Roane State Community College, Oak Ridge

8:00 – David Salisbury, Kimberley Klinker and the University of Richmond GIS Class, University of Richmond. ***Biocultural Diversity in the Amazon Borderlands: A Basin Scale GIS Analysis.***

8:20 – Jayajit Chakraborty, University of South Florida. ***Using Spatial Regression to Advance Environmental Justice Analysis: A Case Study in Tampa Bay, Florida.***

8:40 – Kendrick Curtis, State of Tennessee, Department of Economic and Community Development. ***A Field-Based Decision Support Tool for Land Use Planning and Management.***

9:00 – Christopher Badurek, Richard Crepeau and Austin Chamberlain, Appalachian State University. ***Using GIS and Land Use Histories for Environmental Planning along the South Fork New River, NC.***

Paper Session 38: Cultural and Historical Geographies

Salon D

Chair: Katie Algeo, Western Kentucky University

8:00 – Margaret Gripshover, Western Kentucky University and Thomas Bell, University of Tennessee and Western Kentucky University. ***When the AAG Came to Town - Knoxville: Winter of 1945.***

8:20 – George Towers, Concord University. ***Rediscovering Rural Appalachian Communities with Historical GIS: A Case Study of Summers County, West Virginia.***

8:40 – Robert Kruse, West Liberty University. ***Acorns, Billboards and Bed-Ins: The Symbolic Uses of Space in John and Yoko's 1969 Campaign for Peace.***

9:00 – Katie Algeo, Western Kentucky University. ***Southern Saltpeter: A Social Geography.***

Paper Session 39: Monsoons and Cyclones

Hiwassee

Chair: Jennifer Collins, University of South Florida

8:00 – Emily Wright, Rosana Nieto Ferreira, Tom Rickenbach and Richard Barnhill, East Carolina University. ***Effects of Cold Air Intrusions on the Onset of the South American Monsoon.***

8:20 – Richard Barnhill, Tom Rickenbach, Rosana Nieto Ferreira, Steve Nesbitt and Emily Wright, East Carolina University. ***Regional Variation of Convective Structure at Monsoon Onset across South America Inferred from TRMM Observations.***

8:40 – Justin Maxwell*, Peter Soule**, Paul Knapp*, Jason Ortegren*** and Matt Sufficool** (*University of North Carolina – Greensboro, ** Appalachian State University, ***University of West Florida). ***Drought-Busting Tropical Cyclones in the Southeastern Atlantic United States: 1950-2008.***

9:00 – Corene Matyas, University of Florida. ***Comparing Radar-Derived Convective Precipitation with Lightning Flash Data in Landfalling Tropical Cyclones.***

9:20 – David Roache, Jennifer Collins and Thomas Boucher, University of South Florida. ***Seasonal Change in ENSO Region Sea Surface Temperature Anomalies and Atlantic Tropical Cyclone Activity***

Paper Session 40: Citizenship and Identity

Great Smoky BC

Chair: Henry Way, James Madison University

8:00 – Alpan Risvanoglu, University of South Carolina. ***Citizenship and Its Meaning in Istanbul.***

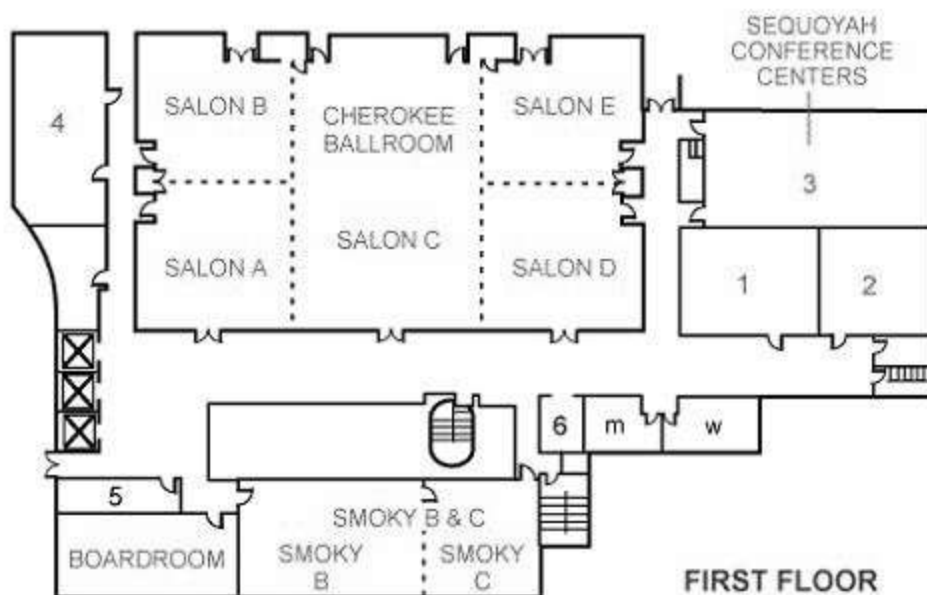
8:20 – Hannes Gerhardt, University of West Georgia. ***The U.S. State and Evangelicals in Sub-Saharan Africa.***

8:40 – Andrew Cockram and John Lauermann, University of South Carolina. ***"And I Christen You As Subject:" Reconceptualizing Governmentality in the Production of Neoliberal Citizenship.***

9:00 – Toni Alexander, Auburn University. ***Citizenship Contested: The 1930s Domestic Migrant Experience in the San Joaquin Valley.***

9:20 – Henry Way, James Madison University. ***Meatpacking, Place, and Identity: Spatial Tensions in American Immigration Politics.***

HILTON KNOXVILLE - MAIN FLOOR



- 1. SEQUOYAH 1
- 2. SEQUOYAH 2
- 3. SEQUOYAH 3
- 4. TENASE
- 5. Banquet Office
- 6. Banquet Captain

FIRST FLOOR



Steering Committee Policy

Southeastern Division of the Association of American Geographers

Adopted, November 1995

Non-Smoking Policy

The Southeastern Division of the AAG maintains a non-smoking policy in all meeting rooms.

Accessibility

In support of the Americans with Disabilities Act, the Southeastern Division of the AAG and its contracted hotel's management make reasonable accommodations to the extent possible when they are requested. Individuals requiring such accommodations are asked to make their needs known to the Local Arrangements Committee as early as possible so every effort can be made to provide the requested accommodations.

Professional Conduct

Professional ideas and information are exchanged most efficiently at the Southeastern Division of the AAG's Annual Meeting in an atmosphere free of abuse or harassment and characterized by courtesy and respect. To that end, the Southeastern Division of the AAG expects all individuals who attend to conduct themselves in a manner that establishes an atmosphere free from discriminatory practices and harassment.

