
WAFCS NEWSLETTER

WISCONSIN ASSOCIATION OF FAMILY AND CONSUMER SCIENCE

Founded in 1921 | Fall, 2014 Issue



The mission of WAFCS is to provide leadership and support for professionals whose work assists individuals, families, and communities in making informed decisions about their well-being, relationships, and resources to achieve optimal quality of life.

.....



DIANE KLEMMER, Ph. D., CFCS, CFLE received the **Leader Award** from the American Family and Consumer Sciences Association on June 28, 2014 in St Louis, MO at their national conference and EXPO. This award recognizes and honors Family and Consumer Sciences professionals who have made significant contributions to the field through their involvement with AAFCS.

Diane Klemme has served as the affiliate president of the Wisconsin Family and Consumer Sciences Association, 2012-2013.

She is an Article Reviewer for the Journal of Family and Consumer Sciences Education, 2010-2014; she was a

Member of the Ethics Committee for the American Association of Family and Consumer Sciences (AAFCS) 2011-2013 ; she has been President of the National Association of Teacher Educators of Family and Consumer Sciences (NATEFACS) , 2009-2010. In addition, she advises the student chapter of Stout's Family and Consumer Sciences Association. She has been instrumental in encouraging and offering support for students to attend both the state and national meetings for the American Family and Consumer Sciences Association.

Diane is a Professor in the College of Education, Health and Human Sciences. She is also the Program Director for Family and Consumer Sciences Education program as well as she is the Coordinator for the annual Family and Consumer Sciences Conference at UW-Stout. This conference attracts middle and high school teachers from multiple states to UW-Stout every September for professional updates.

During spring 2015, Diane plans to be on a sabbatical. She will work on a project linking math and science concepts (STEM) to the Family and Consumer Sciences curriculum in Housing.

We congratulate Diane Klemme on receiving the AAFCS Leader Award; and we look forward to her continued leadership in the profession of Family and Consumer Sciences both on campus and in the nation.



A Message from Your President..



Greetings WAFCS Members,

It is with WI pride that I welcome you to the WAFCS Autumn newsletter. The AAFCS national conference, June in St. Louis, MO, saw our own Diane Klemme, professor at UW Stout, receive the Leadership Award. WI was represented by the AAFCS past president, Sue Buck, UW Extension, and incoming AAFCS president elect, Carolyn Barnhart, emeritus professor UW-Stout. The International Federation of Home Economics- United States president is Carol Anderson. Other WAFCS members presented sessions, worked on committees, were exhibitors, Senators. Jessica Monfils was an AAFCS intern for the summer.

The AAFCS Senate passed important changes to the structure of the organization and collaboration opportunities with The Alliance. Look for the article explaining it in more detail in this newsletter.

The WAFCS Board meeting in August involved much dialogue regarding change, as well as plans for an exciting 2015 Conference. A call for proposals is available. Please submit any topics and programs you feel may benefit other professionals. Our organization is only as strong as its members! We want your input.

Collaboration efforts have started with a conference call with CTE, Career Technology Educators, where the best practices in each organization were shared in hopes of promoting them all.

It looks like an exciting year with changes designed to streamline our organization. As WAFCS members you are important in determining what types of professional development you would like. Please communicate your ideas, concerns and successes to me or any WAFCS officer.

I would like to welcome our new Executive Director, Janet Powell, aboard and have enjoyed working with her thus far.

Sincerely,

Jeanne Schwass-Long CFCS
WAFCS President

A colorful advertisement for Nasco's parenting simulation manikins. The background is dark purple. On the left is a realistic baby manikin wearing a white diaper. In the center is a white, featureless baby manikin with a red heart on its chest. To the right is a white, featureless adult manikin. Text and graphics include:

- Top headline: "Nasco offers a range of parenting simulation manikins to fit every need and budget!"
- Left side: "READY or NOT? TOT! Manikin Series" logo and a list: "4 Versions Available: • Basic • Standard • Intermediate • Enhanced/ Drug-Affected".
- Center: "Love to Care Teenage Pregnancy Prevention" logo and text: "A new economy infant simulator for teen-age pregnancy prevention."
- Right side: "Nasco FAMILY & CONSUMER SCIENCES" logo, a "2014 Life Skills Education Catalog" cover, and a "Presto" slow cooker.
- Bottom right: "Contact Nasco for your FREE Catalog!" in a blue oval, followed by "Nasco FAMILY & CONSUMER SCIENCES" logo, phone number "1-800-558-9595", and website "eNasco.com/fcs".
- Bottom center: "Parenting Simulators" in a blue oval.

IFHE 2014 Council Meeting

By Carol Anderson CFCS President IFHE - US



The International Federation for Home Economics (IFHE) held the 2014 Council at Brescia University College in London, Ontario. Brescia is a unit within the University of Western Ontario. The IFHE organizes two meetings over a four-year period of time. A Council Meeting focuses on the business of the organization and a Congress is primarily a professional development opportunity with keynote presentations daily and then many research and program presentations and posters. A limited amount of time is dedicated to organizational business.

Sue Buck served as the WAFCS delegate since we pay an organization membership and I served as a delegate for IFHE-US.

Renata Kaczmarek, the Social Affairs Officer in the Department of Economics and Social Affairs at the United Nations Secretariat in New York gave the opening Council presentation. She continually works to bring a family perspective to the various activities of the UN including preparing publications and reports on a variety of topics relating to families. Policy issues such as families and poverty, work-family balance and inter-generational relations have been topics pursued during the past few years and she highlighted how research conducted by the IFHE community is used to build the case and support the policy initiatives.

What does a Council Meeting Include?

A Council Meeting includes many reports. Since the organization is divided into regions of the world, each region shares what is happening. The many committees meet and they too provide a report. The Council approves a budget and this is usually a rather lengthy discussion as IFHE has some of the same issues as AAFCS and WAFCS. Additionally, the organization is offering more electronic opportunities including an electronic journal. Dues were discussed and eventually increased. This is an interesting discussion as the economy is so different across the world and dues are adjusted accordingly.

Incoming President

Sidiga A. Rahim Washi was elected President-Elect and will assume the Presidency during the 2016 Congress in Korea. Her nationality is Sudanese and she has her Ph.D. from Iowa State University. A President serves for four years.

2016 World Congress

The 2016 Congress is being organized by the Korean Home Economics Association and will be at the Sookmyung Women's University in Deajeon, Korea July 31 – August 5, 2016. For more information and submission of an abstract, check out: <http://www.ifhe2016.org>

Our Canadian friends were outstanding hosts and we appreciated all they did to make this a successful adventure.

Update on Streamlining AAFCS

The AAFCS Senate 2014, considered and approved motions on two topics: **membership and bylaws**. These changes are designed to streamline the Association so we are able to focus more time and energy on societal issues and program initiatives. The changes will be described in this article. We will revisit them for more in depth understanding as needed.

A. Effective September 1, 2014, AAFCS membership categories and annual dues are as follows:

- Professional (includes the former Active, Ellen Richards Sustaining and Associate) = \$150 *
- Emeritus = \$100 (formerly \$95)
- Student = \$50 (formerly \$60)

*A value added for Professional category will include access to live virtual professional development (webinar) offerings. (formerly \$35)

B. Effective January 2015 Bylaws amendments include:

1. The newly formed Leadership Council will replace the Senate with the purpose of being more focused on advisory and leadership functions.
2. All AAFCS members will have representation on the Leadership Council.
 - Individual members will be represented by Affiliate leaders.
 - Institutional members will be represented by elected officers of the Assembly of Higher Education.
3. The Leadership Council will:
 - appoint the Nominating Committee to identify candidates for election to the Board of Directors
 - elect the Board of Directors
 - approve the Association's bylaws.
4. Two standing committees will continue: Awards and Recognition Committee and the Finance Committee. The Nominating Committee will be appointed by the new Leadership Council. Other current standing committees could transform into other groups or could dissolve when their work was completed.
5. The Board will consist of seven members, (down from nine).
 - Directors will be elected by the Leadership Council.
 - The Board of Directors will be responsible for selecting their officers, and overseeing membership categories, dues, and benefits.

There will no longer be any Academy as described last year, not to be confused with the Leadership Academy.

The second tier or collaborative model is The **Alliance**, established in 2006. It partners with other organizations, while retaining AAFCS identity. A steering committee of representatives was formed and co-chairs were identified to lead the development of this model. The three co-chairs are: 1) Board on Human Sciences 2) National Association for State Administrators for F/CS and 3) USDA/NIFI-(National Institute of Food and Agriculture) Division of F/CS.

Partners see the value of collaboration to support advocacy and advance the visibility and value in their own organization(s), and across the F/CS community. The make up of the Alliance includes: 11 Associations, 2 Honor Societies (Kappa Omicron Nu and Phi Upsilon Omicron), 1 F/CS related Youth Organization (FCCLA), and 1 government agency (USDA, National Institute of Food and Agriculture, Family and Consumer Sciences). *Check the AAFCS website for the specific associations.

As you read this information, jot down any questions or suggestions and forward them to me. At the Board meeting, we questioned why 4-H was not included as an F/CS Related Youth Organization? We appreciate your feedback as Mary Kennedy and I will take it to the Affiliate Leadership Workshop in October. Jeanne Schwass-Long CFCS



Congratulations 50 Year Members

Carol Anderson

I began my professional experience as a member of the Wisconsin Home Economics Association for three years and when I went to Iowa State, my membership transferred. Then when I accepted a position at Cornell University, my affiliate membership moved to New York. Since 2002, I have returned to my roots here in Wisconsin. Have been active in the affiliates as well as nationally. Serving as chair of the AAFCS Public Policy Committee was one highlight as committee members were able to bring policy back on the AAFCS agenda. Another highlight has been the work done since 2000 on the FCS Body of Knowledge. This has been a collaborative effort and continually updated to reflect the evolving profession. Serving as AAFCS President resulted in a deeper understanding of the many issues a professional organization addresses. This also resulted in getting to know so many more of the outstanding professionals in our field.



June Luett

June Luett began her teaching career at the junior high school level. Her experiences took her to Eau Claire, WI for five years and Geneva, IL for one year. This led to a tour in the U.S. Peace Corps, Jamaica, West Indies for two years where June found her skills in home economics very useful and needed. After leaving the Peace Corps, June taught senior high school in Neenah, WI for 29 years.

At the different levels of teaching June incorporated a homemaker focus, Bloom's Taxonomy, consumer education, intellectual skills, work of family and career preparation. Now, for you younger teachers and current students, imagine no boys in home economics (Family/Consumer Science) classes! Well, June as a trend setter introduced curriculum for boys' classes and, shortly thereafter, co-ed classes.



We very much appreciate the 50 years of contributions from Carol and June. They have seen many changes in AHEA/ AAFCS throughout their careers. Both have been instrumental in forming the foundation of their respective careers and areas of expertise. Thank you both for your past and continued contributions to the field of Family & Consumer Science.

On Becoming My Mother..

“On Becoming My Mother” was the message presented at the 1st General Session of AAFCS by Professor Geraldine Hodelin, UTECH Academy of Jamaica. Professor Hodelin was born poor, but very intelligent. She worked her way up through the University and now is a professor.

“How I’ve become this woman of WORTH?” Nuggets of simple wisdom were shared that resonated with most individuals present. Consider our basis for Family and Consumer Sciences as you read these thoughts.

- *“Learn to recognize when you’re on the right road. If not, get off.”*
- *“Becoming someone of worth is an “uncharted journey” and requires frequent glances in the mirror.” Who are the leaders/individuals in your life that inspired you? Your value and worth is collectively the sum total of that influence.*
- *“Raise your children in such a way that others will love them.” Teach them to not just do “what they would like”, instead help them to do “what is good”. Validate children, neighbors and teachers that work with them. “Be a family of learners and educators: listen to how and what is said to make them THINK.”*
- *“Remember your roots: it is a stabilizing force along the journey to becoming you.” Turn back and help those you left behind. Success can be a lonely road. Make friends where it is opportune.*
- *“Pray, Ask, Give Thanks and Celebrate Him=God”. “Faith is personal, PRACTICE IT!”*
- *“Never be sparing with love for family, tell them ‘I love you’ often.”*
- *Be fully engaged in life. You are being watched even when you do not wish to be.” Have pride in yourself and embrace your identity with confidence! Be inspired to create and show your personality as well as your preferences.*
- *Globally we are all talking the same context: “the quality of life of families”. Listen to the stories of others, AS THEY TELL IT, NOT HOW YOU WANT TO HEAR IT. “If you are going to speak up for others, you must first HEAR and UNDERSTAND them”.*
- *“My professors taught me to THINK: What is desirable? What needs to be changed? Who is part of the change? How do you know when it succeeded?” There are often more questions than answers.*
- *“Sharing and giving of oneself is an investment in self and others.”*
- *“Celebrate after you cross the finish line”!*
- *“How you become ‘the person of substance’ is to share it and pass it forward.”*
- *“Women of Worth change peoples’ lives and feel comfortable in their own skin.”*

Use and enjoy these simple nuggets of thought from Geraldine Hodelin in your personal and professional life.

Jeanne Schwass-Long, CFCS

New Professional Certification Under Development

AAFCS is now creating a new professional level certification for nutrition and wellness educators. The ***Certified Nutrition and Wellness Educator*** credential is being developed to validate the knowledge and skill attainment of professionals involved in teaching, administering, or developing resources for programs educating others about nutrition and wellness. This certification will be competency-based and will provide a quality assurance measure for validating that those who are serving in educator roles are qualified for this important assignment.

The educator roles of professionals certified as nutrition and wellness educators may be tied to various settings, including:

- formal education settings (i.e. public K-12 education or post-secondary/higher education)
- community-based systems of delivery (i.e. governmental programs such as Cooperative Extension and WIC, or nutrition education delivered in settings such as the YWCA)
- business/industry activities (i.e. nutrition advisors in grocery stores, fitness and wellness programs, and the food service industry).

The national AAFCS certification will not replace state teacher licensure. Instead, the certification will provide supplemental validation and recognition as a complement to teacher licensure.

The AAFCS Credentialing Center has convened a panel of subject-matter experts, and other procedures for development of the new certification program are planned for this fall. The formal launch of the new certification is expected in 2015.

Stay tuned for additional information and details!

Esther Fahm, Vice President for Professional Development

Source: Lori Meyers, PhD, CFCS, Director of Pre-Professional Assessment and Certification, and Managing Director of the Family and Consumer Sciences Research Center, AAFCS

2015 Leadership Academy

The AAFCS Community on Building Leadership Capacity is presenting the AAFCS Leadership Academy for New Professionals (Prerequisite: BS degree or greater with up to 5 years membership in AAFCS) who wish to design their own leadership plan in order to secure their preferred future as leaders in AAFCS. The Leadership Academy will begin with face- to-face sessions prior to the AAFCS Annual Conference in Jacksonville, FL, June 23–24, 2015. Activities of the Academy will continue throughout the following year using interactive learning modules and webinars with the latest technologies for group sessions. The application and rubric for the participants are posted on the AAFCS website: ! <http://www.aafcs.org/developmentcenter/leadershipacademy.asp> ! **Applications for the Leadership Academy are due October 15, 2014 with notification on November 15.!**

Protégé Plus – WAFCS Mentoring Initiative

by Cathy Lader

How does one measure success? Often times the world sees someone's fame or fortune as a measure of their success. But the big question is – do they themselves feel they are a success? It is only when you have an inner feeling of success, because you have achieved what you set out to do, that you are truly successful.

For the new professionals in the Protégé Plus initiative, it is their inner feeling of success that is most valuable as it is based on the achievement of their vision of success, not on someone else's. Each new professional set their own goal(s) they hope to accomplish with their mentor. Currently the mentoring teams that have been established include:

- Kayla Leirimo mentored by Donna Dinco
- Kama Teske mentored by Barbara George
- Leia Blazek mentored by Catherine Lader
- Sheryl King mentored by Stephanie Love.

Besides mentoring new professionals one-on-one there are two other options being pursued in Protégé Plus. Small group mentoring of new professionals in a CESA district would focus on a professional need these individuals have in common and then one, or more, FCS professionals would serve as the mentor for the group. It is the plan to pursue this format in CESA 11 this school year.

Lastly Protégé Plus is establishing a “resource bank” that will list FCS professionals and their area(s) of expertise. How will this work? When a new professional has a question that he/she needs additional assistance with they would turn to the “resource bank” to locate additional help. Using the contact info provided, the new professional would contact the individual(s) in the “resource bank” directly and request help. The “resource bank” option is offering help on a short-term basis to new professionals.

WAFCS Members Needed for “Resource Bank”

Each WAFCS member is encouraged to serve as a professional in the “resource bank”. Submit your name, contact info and area(s) of expertise to Catherine Lader at jclader@inwave.com using the subject line of resource bank. Areas of expertise we are looking for include, but are not limited to:

- development of standards-based curriculum
- modes of effective communication
- budget assistance
- management of FCS department
- professional standards
- instructional strategies
- advising FCCLA chapter
- student grading / assessments
- construction of exemplary lessons
- classroom management.

Protégé Plus is partially funded by a WAFCS Foundation Grant.

**Advancing the Field
WAFCS Conference
March 26-28, 2015
Three Bears Lodge
Warrens, WI**



“Advancing the Field” by Susan Turgeson

As family and consumer sciences professionals, everything in which we engage has the potential to advance the field. It is critical that we continually educate others about family and consumer sciences (FCS) and the impact our field has on individuals, families, and communities.

Each time you interact with others, you can advance the field through your attitude and through advocacy. Demonstrating your positive passion for the work you do goes a long way in making family and consumer sciences a valued profession. Being an advocate for family and consumer sciences related issues helps others recognize the integrated nature of our field and highlights important concerns that should be addressed.

Collaboration with partners is a natural way to advance the field. Many times this may come in the form of community service projects or community outreach activities. Remember to connect what you are doing to the expertise you have as a family and consumer sciences professional. You are able to share a holistic perspective that is foundational to FCS.

Many FCS professionals are advancing the field through their entrepreneurial ventures or their research interests. Family and consumer sciences is broad reaching and the background of practical expertise provides a framework for success.

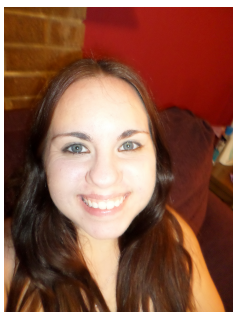
During the annual conference, we will be highlighting professionals who are advancing the field through each of these means. If you, or someone you know, is advancing the field through attitude, advocacy, collaboration (outreach/service) entrepreneurship, or research please consider submitting a breakout session proposal. The best way to advance the field is to share with one another and inspire each other!

Editor's note: At the Summer Board of Directors Meeting, it was decided to adopt “Advancing the Field” for our newsletter theme this year. I welcome any articles along this theme for the Winter and Summer issue.

Save the Date:

**WAFCS Annual Conference
March 26 - 28, 2015
Three Bears Resort
Hotel, Water Park, & Convention Center 701 Yogi Circle
Warrens, Wisconsin 608-378-2500 www.go3b.com**

Meet Your 2014-2015 Student Unit Vice President and Social Communication Chair



Hello! My name is Danielle Graser and I am the Vice President of the WAFCS Student Unit. I am a student at UW-Stevens Point and am also the Treasurer of SPAFCS (Stevens Point Association of FCS). We had our first meeting of the year this week and it was a huge success! There were a lot of new faces and students who had majors similar to Family and Consumer Sciences Education. We baked three different chocolate chip cookie recipes to experiment with different ingredients and mixing methods. We also discussed upcoming events, such as participating in Financial Coach Training at UWSP and attending the Madison College Tour/Meeting coming up in October! We also have fundraising and a Mullins Cheese Factory/Point Brewery tour coming up, as well. We look forward to what the rest of the semester will bring!



Hi! My name is Katie Ladsten and I am a senior at University of Wisconsin – Stout. Along with my degree in Family and Consumer Sciences I am minoring in Health Education. One of my favorite clubs I participate in at school is Habitat for Humanity. We have a variety of builds that we help at throughout the semester. We also do a weekend trip to the Twin Cities to help at the resale store and one build site. As an officer of the student unit of WAFCS I want to encourage more students to get involved in the group. Also I am excited to help plan the conference this year with other members of the student unit.

WAFCS FOUNDATION DONATION FORM

\$ _____ Other _____ \$100 _____ \$50 _____ \$25 _____

Name _____

Address _____

City/State/Zip _____

In Memory of _____

In Honor of _____

AAFCS/WAFCS is a 501 (c)(3) not-for-profit organization. All contributions are tax deductible.

Make checks payable to:
WAFCS Foundation & send to:

Karen Goebel,
Chair WAFCS Foundation
1821 Camelot Drive
Madison, WI 53705 Ph: _____

Please send a card acknowledging this gift.

Name _____

Address _____

City/State/Zip _____

WAFCS Foundation

Consider Making a Year-End Contribution

By Jean Zeithaml, CFCS, WAFCS Foundation Member-at-Large

“Do your givin’ while you’re livin’, so you’ll be knowin’ where it’s goin’!” is a favorite line of WAFCS Foundation Board Chair, Karen Goebel, and one to keep in mind as the end of the year approaches. What motivates YOUR giving? Experts advise to find your passion and concentrate your giving to what you are about and what you believe is important. Support those things that have meant the most to you. Make a decision to support the profession of Family and Consumer Sciences that affected your career choice, personal life, and introduced you to some of your dearest life-long friends. Contributors to the Foundation have often honored a loved one or friend. Memorial gifts honor those who have lived a life of service. Making gifts in recognition of others offers a wonderful way to affirm your personal priorities and values.

Foundation Donations Make Unique Gifts/Honors

We really admire and appreciate members’ creativity in making contributions to the WAFCS Foundation as a unique way of honoring their colleagues. For example, **Diane Brion** simplified her 2013 Christmas Exchange “shopping” by making donations to the Foundation in honor of her friends/colleagues, **Nyla Musser**, **Karen Joos**, **Mary Meehan-Strub**, and **Judy Rommel** in lieu of gifts. Diane made another donation in honor of **Judy Rommel’s** birthday.

Susan Turgeson made a recent donation in honor of **Carolyn Barnhart**, newly installed AAFCS President-Elect, and in honor of **Diane Klemme’s** AAFCS Leader Award. **Lois Alfsen** donated in memory of **Carrol (Lucille) Molner Aiello**. **Janet Powell** also made a recent donation to the Foundation.

Foundation Earnings Low, Yet Additional Awards Made

While interest rates and earnings have remained low, the Foundation has actually awarded even more funding to worthy WAFCS members. Multiple **Professional Project/Research Grants** have been awarded the last three years to professional members (two in 2012 and three each in 2013 and 2014). At the request of the national association, we have added **travelships** to support student attendance at the national/AAFCS annual meetings as well as the state/WAFCS annual conferences. All travelships are based on “non-reimbursed expenses from other sources” documentation and toward normal expenses such as registration, lodging, and travel.

*A thank-you note from **Molly Hundt**, one of the students who received a travelship to attend the 2014 AAFCS Annual Meeting in St. Louis stated: “I want to express my gratitude for the Foundation’s support of students attending the AAFCS Meeting. I really enjoyed my experience and I am glad to have been able to attend with your help. I learned a lot and especially enjoyed sessions on ‘Standards-Based Grading’ and ‘Financial Literacy,’ as well as the ‘Design Showcase.’”*

Given the poor earnings climate and that donations have also been down, the Foundation can use your contributions more than ever! We’re awarding more funds than we’re taking in. In addition to the above awards, the Foundation presents an **undergraduate scholarship** and **travelships** to support professional WAFCS award winners’ attendance at the AAFCS Annual Meeting. The Foundation also pays the WAFCS annual association **membership dues in the International Federation for Home Economics**. It is a way to support our profession at the international level. Consider making a year-end contribution to help us make up our income/outgo deficit and continue to make an investment in the future of our profession! AAFCS/WAFCS is a 501 (c)(3) not-for-profit organization and all contributions to the Foundation are tax-deductible. Thank you for your support!

HUGS for WAFCS Students

Through a program called Helping Undergraduate and Graduate Students (HUGS), WAFCS subsidizes half of each student membership. To qualify, complete your AAFCS membership form http://www.aafcs.org/Membership/membership_print.html and submit with payment in full (\$50). Upon receiving confirmation of your AAFCS membership, forward a copy of the letter to WAFCS President Jeanne Schwass-Long CFCS at president@wafcs.org. Be sure to include a current address. A \$25 check will be sent by WAFCS Treasurer Susan Turgeson, CFCS. We look forward to your membership and participation!

Wisconsin Association of Family & Consumer Sciences Financial Report

August 1, 2013 – July 31, 2014

Opening Account Balance	\$	
15163.28		
Income	\$	
22870.19		
Disbursements	\$	
19927.74		
Net Income	\$	
2942.45		
Cash On Hand	\$18,106.33	
Chase Checking Account		
Securities		
\$10,846.83		
Delaware Limited-Term Government Fund A		
Class 1233.997 Shares @ 8.79		
Total Assets as of 08/08/14		
\$ 28,953.16		

Wisconsin Association of Family & Consumer Sciences Foundation Financial Report

August 1, 2013 - July 31, 2014

Opening Account Balance		
\$44,903.53		
Income		
5,392.88		
Disbursements		
5,696.33		
Net Income		
\$ (303.45)		
Cash on Hand	\$44,600.08	
Chase Money Market Savings Account		
Certificate of Deposit		
\$35,713.51		
Chase - Interest compounding daily		
Total Assets as of 8/08/14		
\$80,313.59		

Did You Know??

If you buy from amazon.com you can contribute to AAFCS through your purchases. Just sign up for AAFCS under the Amazon Smile program.

AAFCS registered itself for the Amazon Smile program so the funds are remitted to the national organization. The funds will support the Annual Giving or unrestricted revenue, which goes to support all AAFCS programs, including membership, affiliate development, etc.

Review WAFCS Board Meeting Minutes Online

The WAFCS Board of Directors invites all WAFCS members to stay connected by accessing meeting minutes via the website at <http://www.wafcs.org/council> under the "Meeting Minutes" tab. If you would like a paper copy of the minutes mailed to you, please contact WAFCS Executive Director Janet Powell at 608-271-0776.

Recognizing Our Achievers

Teacher of the Year:

Guidelines for the Teacher of the Year have been changed this year.

Significant changes made include:

1. The deadline date has been changed to the second Monday of January in each year. January 12, 2015 is the deadline for 2015.
2. To encourage more participation, the award has been opened up to full time permanent FCS Teachers who have retired within twelve months of the AAFCS National Nomination deadline.
3. The terminology has been changed to refer to FCS curriculum Focus which broadens the focus areas. See Five Steps: Number three.
4. Categories have been combined to reduce the number of pages submitted from 23 to 15. The total number of fifteen pages to be submitted include:
 - The completed online nomination form.
 - Vita-two pages including specific information pertaining to the curriculum focus.
 - FCS Curriculum Focus-eight pages maximum. This includes the description, school/community setting, goals and outcomes, impact statements, funding challenges and photographs/drawings, figures/tables, and media clippings et al., which illustrate and further explain the curriculum focus. Note: What used to be a separate five page appendix has been combined with the body of the nomination, thus only key items would be included. Note: This number of pages requires the nominee to write succinctly and to include only vital information.
 - Four letters of support.
 - An attached photo.

5. The scorecard has been revised to reflect 100 points. Credentials remain at five points but, FCS related sponsorships have been combined with the category of **Nominee shows an exemplary level of professional commitment to FCS.**

In addition, The ESAE Community will award each Merit finalist \$250 for attending the national conference and participating in the ESAE Curriculum Showcase. The other affiliate nominees, who attend the national conference and participate in the ESAE curriculum showcase, will receive \$100.

We all know outstanding teachers of FCS. Please nominate someone deserving. Our 2014 WAFCS Teacher of the Year, Veronica Campbell, will be submitting her application to the 2015 AAFCS Teacher of the Year competition. Good luck, Veronica!

In 2015, AAFCS will not have a Leader Award or a New Achiever Award.



Quilt made by Beverly Braun for the Community of Apparel, Textiles, and Design Showcase and Exhibition

Dolls made by Beverly Braun, Marcia Larson, Diane Klemme for the Little Black Dress Event.

Keep in touch!

Log on to www.wafcs.org

Find us on Facebook. Search **WAFCS**

Log on to www.aafcs.org

Last call for Directory updates - If you have moved, switched to cell phone only, have a different email address due to change of provider or setting, please **send changes to executivedirector@wafcs.org** Thanks to those of you who have sent changes to me. Also, a preference would be to use a personal email address, particularly if you teach at the secondary level. Many school districts send group emails to spam mail. **New directory will come out November 1.** Thanks. Janet Powell

Important:

Consent Form In checking with AAFCS, we are asked to have written consent for publication of pictures. **Please copy and fill in the consent form below and return to Janet Powell either by email (executivedirector@wafcs.org) or regular mail (5605 Barton Road, Madison, WI 53711).** This is especially important for anyone who attends national, state or regional meetings.

WAFCS Permission for Publication Release Form

I give my permission for WAFCS to use my photo, possibly with my name included, in a manner consistent with quality, professional education, in any WAFCS electronic or print paper media communication. I also realize that WAFCS or any of its Regions may submit such communications to AAFCS as well as professional media covering WAFCS events and achievements.

This permission can be revoked at any time by contacting the WAFCS State President in writing.

Print Name

Signature

Date



**Wisconsin Association of
Family and Consumer Sciences**

Janet M. Powell, CFCS
WAFCS Executive Director
5605 Barton Road
Madison, WI 53711
608-271-0776
email: executivedirector@wafcs.org

2014-2015 Calendar of Events

October 10-12	APU Fall Leadership Workshop
October 25	WAFCS Board of Directors teleconference call, 9:00 am
October 15	E-Newsletter deadline*
December 15	Winter Newsletter deadline*
February 15	E-Newsletter deadline*
March 27,28	WAFCS Annual Conference Three Bears Lodge, Warrens, WI
May 1	Summer Newsletter deadline*
June 24-27	AAFCS Annual Conference Jacksonville, FL

*Send newsletter info to: executivedirector@wafcs.org

In this Issue

Leader Award	Page 1
President's Message	Page 2
IFHE Report	Page 3
Streamlining AAFCS	Page 4
50 Year Members	Page 5
"On Becoming My Mother"	Page 6
AAFCS News	Page 7
Protégé Plus	Page 8
Advancing the Field	Page 9
Student Unit Officers	Page 10
WAFCS Foundation	Page 11
WAFCS Reports	Page 12
Recognizing Achievers	Page 13
Reflections from St. Louis	Page 14
Photo Consent Form	Page 15