

Los Angeles Basin Section Society of Petroleum Engineers

Recipient of the 2011 SPE President's Section Award for Excellence

A Message from the Chair



Forum, Joint Meeting with CCCOG, Scholarships, Board Members & ATCE

Although we are in our traditional summer SPE hiatus, planning for next year is already underway. Our first speaker will be Robert Sutton, an SPE Distinguished Lecturer whose talk will “Illustrate that complex well geometries increase the critical velocity requirement and that failure to account for this can result in loss of both production and reserves”. Our Program Chair, Robert Schaaf, has provided the full Abstract for the talk to this newsletter – so please take a look at it. The meeting date is Wednesday, September 9th so mark your calendars.

Then on Wednesday September 16th, we will hold a joint meeting with the Conservation Committee of California Oil & Gas Producers. This meeting will be held at the Grand and feature a speaker on the vagaries of oil & gas demand & supply. We will be sending out a Meeting Announcement once details are firmed.

Scholarship Applications have been a bit thin this year, so please consult the application and criteria in this newsletter to see if you know anyone who would qualify and would like to apply. We have \$20,000 in our Section budget for scholarships so we would like to have a good number of qualified applicants from which to choose. The Board has expressed an interest in awarding fewer, but larger scholarships.

continued on page 2....

Contents

Petroleum Technology Forum
Wednesday September 9th,
“Understanding Liquid Loading
Will Improve Well
Performance.”
pages 1 & 3

Photos from June 9 Forum
page 4

LASPE SCHOLARSHIPS
APPLICATION DEADLINE
EXTENDED to JULY 15th
pages 5 & 6

Ted Frankiewicz to receive
Special SPE Award
page 7

Visit with T. Boone Pickens
pages 8 & 9

OCEC Annual Meeting
page 10

2015 California State Science
Fair - THANK YOU letters
pages 11 & 12

Student Chapter Report
page 13

BOD Minutes for April & May
pages 14 - 18

PETROLEUM TECHNOLOGY FORUM, WEDNESDAY SEPTEMBER 9TH

The next Petroleum Technology Forum is “Understanding Liquid Loading Will Improve Well Performance” by Robert Sutton, on September 9th. *Details follow on page 3 ...*

<u>Location:</u>	<u>Time:</u>	<u>Cost:</u>
Long Beach Petroleum Club 3636 Linden Avenue Long Beach, CA 90807	Registration: 11:30 AM Buffet Lunch: 11:30 AM Presentation: 12:00-1:00 PM	\$25.00 members, \$30.00 non-members, Free for 1st 4 students, others \$5 each

Message from the Chair...*continued from page 1*

We added two new members to the Section's Board of Directors earlier this year and will be seeking to add 1 or 2 new members next year as well. Our Board has been diligent and active so we will be seeking new members who will continue and expand our section activities. One area of interest for 2015-2016 will be to hold 3 - 4 Short Courses of particular interest to our membership - so let us know if you have recommendations.

Finally, the SPE Annual Technical Conference & Exhibition (ATCE) will be in Houston this year, September 28-30. Next year ATCE will be in Dubai. I encourage you to visit the ATCE web site and make plans to attend if you can. Both the Technical Program and the Exhibition will provide a stimulating learning experience - and travel to Houston is cheap compared to travel to Dubai!

<http://www.spe.org/atce/2015/>

Sincerely,
Ted Frankiewicz
SPE LA Basin Section Chair 2014-2015
tfrankiewicz@specservices.com

Contents

LASPE Upcoming Events
& Newsletter Submission Dates
page 19

Services Offered
page 20

Board Members - Committee
Chairs
page 21

LASPE Website
[connect.spe.org/
LosAngelesBasin/Home](http://connect.spe.org/LosAngelesBasin/Home)

[LASPE Facebook](#)

[Young Professional Facebook](#)

LASPE Young Professionals

Our next networking event will be held on
Thursday, July 23rd at the
Belmont Brewing Company
25 39th Place, Long Beach, CA 90803
from 5pm - 7:30pm.
The sponsors are TBD.



LASPE SCHOLARSHIP APPLICATIONS

>>> DEADLINE EXTENDED TO JULY 15TH <<<

SEE DETAILS PAGE 5 IN THIS NEWSLETTER

click this link for applications <http://connect.spe.org/losangelesbasin/aboutus/scholarships>

FORUM FROM PAGE 1 . . .

PETROLEUM TECHNOLOGY FORUM
WEDNESDAY SEPTEMBER 9TH

Understanding Liquid Loading Will Improve Well Performance

by Robert Sutton, Robert P. Sutton Consulting

Abstract

The key take-away: Illustrate that complex well geometries increase the critical velocity requirement and that failure to account for this can result in loss of both production and reserves.

Abstract: Operators of natural gas wells have long used the Turner equations to calculate critical gas velocity to keep gas wells unloaded. The original Turner method was developed for vertical wells with analysis performed using wellhead conditions. However, this methodology is only applicable to high pressure, vertical wells with a simple completion geometry. Modern well design most often employs complex geometries including slant, s-shaped and horizontal well paths as operators seek to reduce costs and the environmental footprint while maximizing the production rate potential. These geometries require special consideration when estimating critical velocity. Wells produced below the critical velocity will develop a static liquid column which can damage the reservoir and impede well productivity. Proper diagnosis of this problem will improve well performance and ultimate recovery.

The purpose of this presentation is to provide an overview of historical techniques for detecting liquid loading and to provide modification to the classical Turner method that address contemporary well designs. The discussions will include recent advances which address the proper evaluation point based on reservoir and well conditions. The talk will also compare the modified Turner methods to the use of multiphase flow pressure drop models for predicting liquid loading and will demonstrate the superiority of using a modified Turner's method to determine critical velocity. Flow loop videos are used to illustrate the result of producing below the critical velocity. Potential improvements will be quantified through field examples for conventional, unconventional and horizontal well applications.

Biography

Rob Sutton is a petroleum consultant in Houston, Texas. He started his 35 year career with Marathon Oil Company in their Gulf Coast Offshore District in 1978. He moved to Marathon's Denver Technology Center in 1985 where he worked in the Reservoir Management Department and developed Marathon's in-house nodal analysis software. He moved with the technology organization to Houston in 2001 and retired from Marathon in 2014.

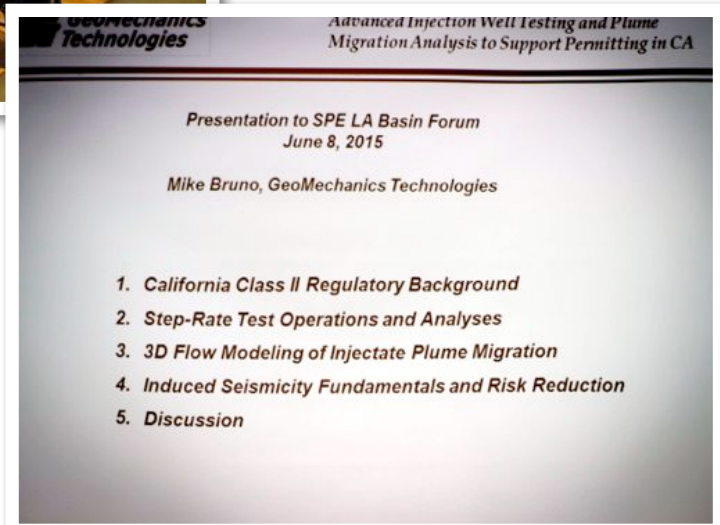
Rob received a BS in Petroleum Engineering from Marietta College. He also holds an MS in Petroleum Engineering from the University of Louisiana at Lafayette. He has authored 27 papers for SPE along with 10 journal publications. He wrote the chapter on oil PVT correlations in the recently updated Petroleum Engineering Handbook as well as coauthored a chapter in Gas Well Deliquification. Rob received SPE's 2014 Production and Operations Award.

Rob was an SPE Distinguished Lecturer for the 2012-13 lecture season.

**PHOTOS FROM JUNE 9TH
PETROLEUM TECHNOLOGY FORUM**

**Advanced Analysis of Fracture Pressure, Induced Seismicity
Risks, and Injectate Plume Migration to Support More
Stringent Injection Well Permitting and Operations in
California**

by Michael S. Bruno, PhD, PE, GeoWell Services



LASPE SCHOLARSHIPS APPLICATION OPEN - DEADLINE EXTENDED TO JULY 15TH -

Dear fellow LASPE members and applicants,

It is the board of director's pleasure to announce the 2015-2016 scholarship program. The program has been updated with a larger budget and wider criteria to attract those engineering students that are committed to the Petroleum Industry. Our goal is to promote local interest in up and coming talent who will be the future of our industry. We want to encourage students to pursue science and engineering curriculums and to increase their awareness of career opportunities in the petroleum industry. The LASPE awards scholarships to local university graduates, undergraduate students and local high school students.

We want to thank the all of the companies, members and contributors who participate in our events, workshops and activities. These activities and the funds generated are the lifeblood of our program that enables us to award scholarships to deserving students for years. Please refer the scholarship announcement and application to a promising candidate if you know one. The LASPE scholarship committee will reach out and spread the word to local universities as well.

For more information, contact:
LASPEscholarship@gmail.com

Announcement and applications online at:
<http://connect.spe.org/losangelesbasin/aboutus/scholarships>

Details:

- Two awards of \$500 each to high school students.
- A minimum of four undergraduate scholarships of \$1,000 each or more; USC, UCLA, UCI and Cal State Long Beach. Minimum of four awards, one for each university contingent upon applicant pool. Plus the scholarship for the undergraduates has been increased \$2,000 by a \$1,000 donation by a Unocal (Chevron) retiree, Sam Sarem, which will be matched by Chevron. This was in response to the generosity of WNAR to wave the registration fee for the SPE Legion of Honor members at the 2015 WRM.
- A minimum of four scholarships for Master Students of \$1,000 each or more, of which Bruce Davis Scholarship will be for the USC award, and 3 others for top Masters Students at UCLA, UCI and CSLUB based on GPA and extracurricular activities. Contingent upon applicant pool.

continued next page...

LASPE SCHOLARSHIPS - CONTINUES

- Two Graduate Student Awards for Excellence of \$1,500 each for the most outstanding contribution to the Oil & Gas industry. Can be project, paper, thesis, etc.
- Candidates who are relatives of SPE Members from outside local schools will be considered as long as they pursue a technical degree path towards the petroleum industry.

The Scholarship committee will accept applications through July 15th. Selections will be made by August 31st and notification to winners by September 8th. Awards will be presented at the Forum Lunch on October 13th.

Scoring Criteria and considerations:

Merit Based scholarship

High School, Undergraduate & Graduate Scholarships

PhD candidates only eligible for Awards of Excellence.

- GPA of 3.3 or higher
- Complete scholarship application
- Must be pursuing technical degree field
- Maintain full time academic load/full time student status for upcoming terms
- Active member of SPE (Student Chapter or L.A. Basin Section)
- Research Project, Paper or Thesis – Synopsis/abstract attachment. 300 words max
- Internships served – When, Where & Duties
- Consideration for activity serving the industry and supporting SPEI section/chapter
 - Section participation
 - Industry event participation
 - Volunteerism at events
 - Attendance of workshops/meetings
 - Young Professionals
- Personal statement of interest in pursuing career in oil & gas industry – 100 words or less

This announcement and the scholarship application can be found online:

<http://connect.spe.org/losangelesbasin/aboutus/scholarships>

- SUBMIT BY JULY 15, 2015 TO BE ELIGIBLE -

CONGRATULATIONS TED!

Awarded the Projects, Facilities & Construction Award by SPE International

We are very proud to announce that Ted Frankiewicz, our Section Chair, has been awarded the Projects, Facilities and Construction Award by SPE International.

The award recognizes outstanding achievement in the advancement of petroleum engineering in the area of projects, facilities, and construction. This prestigious award is only bestowed on one person worldwide each year. ***There have only been 11 recipients, ever.*** Ted, we are very ecstatic for you and we appreciate your outstanding contribution to the oil and gas industry.



Fellow SPE members, please feel free to congratulate Ted. Also, he will be recognized at the SPE Annual Banquet at Annual Technical Conference and Exhibition (ATCE), which will take place September 28-30, 2015 in Houston, Texas. If you plan to attend ATCE this year, please sign up for the Award Banquet and attend the ceremony.

Again, Ted, congratulations for a very well-deserved award!

SPOTLIGHT – VISIT WITH MR. T. BOONE PICKENS

Dr. Eric M. Withjack

Past Chairperson, LASPE Section

Recently (June 16, 2015) I had the opportunity of being part of a discussion session in Newport Beach with a special guest, Mr. T. Boone Pickens. I was very interested in meeting him as he was responsible for the demise of my first industry career with Cities Service Company in Tulsa (he took it apart and sold the assets!). After meeting and listening to him I finally understand now that his geological background, keen business sense, and an uncanny ability to make the right choices regarding investments really got him to where he is today.

I wanted to take this opportunity to share his perspective on some of the global oil and gas issues. Mr. Pickens is a strong proponent of US energy independence, particularly from reliance on the Middle East. He voiced an interesting concept, namely, a North American energy coalition which he envisioned by drawing a “circle” around Canada, the U.S., and Mexico. His personal opinion on the conflicts in the Middle East is that the US should not be engaged in these wars, since we gain nothing from them, spend billions of dollars, lose many American lives, and leave equipment behind. He drew a parallel with Vietnam.

As he mentioned, the US is awash in natural gas. The fall-off of production in the Texas shale plays is being balanced – even exceeded – by the Marcellus shale gas in the northeast. The Marcellus gas is close to big markets in New York and surrounding states. On fracking, he indicated that it has been practiced since 1952. He’s fracked thousands of wells during his career without any major problems. On his own ranch in Texas, the oil zone lies under an expansive aquifer and there has never been any contamination. Without fracking, he stated that the shales would not produce.

As a hedge against oil supply disruptions, the US has a strategic petroleum reserve of about 700 million barrels in salt caverns of Louisiana and Texas. There have been proposals in Washington to increase it to a level of 1 to 1.5 billion barrels, at a large cost to the taxpayers. The question he asks is, considering US production capacity, do we really need it? He mentioned, for example that during Katrina, we extracted only 3 million barrels to cover disruptions. His thought on this issue that we are fine as-is.

In the US our liquid fuel is critical for use in automobiles and smaller vehicles, but the large trucks, buses and trains could be switched over, on a grand scale, to natural gas. This is already in progress for some city bus fleets, and delivery transporters such as UPS and FedEx. The major resistance to this transition is the size and cost of fuel tanks, which he estimates at about \$500 per vehicle and with mass production could settle down at about \$50. He mentioned that switching these vehicles to natural gas would save about 3 million barrels of liquid fuel per day and be beneficial to the environment. Mr. Pickens has tried to get legislation through on this issue, but so far has lacked support in Washington by a slim margin.

continues next page...

SPOTLIGHT – VISIT WITH MR. T. BOONE PICKENS *CONTINUES*

Dr. Eric M. Withjack
Past Chairperson, LASPE Section

Regarding alternate energy, he indicated that the world has enough hydrocarbon resource to satisfy markets for a long time. In particular, I asked him specifically about wind power (since I know he was invested); his comment was that he sold-out on his interest in wind energy farms.

Saudi Arabia is no longer in strong control of the market, mainly because the US is now in the position of being the world's "swing producer" because of our ability to ramp-up production. Mr. Pickens reminded us that over the past year, with oversupply and low prices, the US rig count has dropped from about 1700 to under 900, and shale production is dropping in response. However, with the peaking and start of decline of oil production in Alaska and the GOM, shale oil can help to offset these declines. Mr. Pickens thinks that oil prices will be at about \$70/bbl by year end.

I hope you found the article interesting, possibly containing some useful information, or at least something to ponder. I enjoyed finally meeting him, and tried to faithfully relay Mr. Pickens' own words.

For clarification you may want to visit a website I discovered at: <http://www.pickensplan.com/>



T. Boone Pickens, Pari and Eric Withjack, Newport Beach, CA



OCEC ANNUAL MEETING

OCEC (Orange County Engineering Council) is an umbrella organization representing the professional engineering and scientific societies, engineering and scientific businesses, educational institutions and individuals located in or around Orange County, California. One of the goals is to promote the engineering profession and to improve the image of engineers and scientists. LASPE has been a member of OCEC for many years and has benefited by having our members recognized at the Annual Awards Banquet every year. In the past, many LASPE members have joined events, such as field trips organized by OCEC.

OCEC ANNUAL MEETING:

Every year, OCEC organizes an Annual Meeting to install new Board of Directors and also listen to a prominent keynote speaker on latest developments in engineering and scientific fields. This year the Annual Meeting will take place on Tuesday, July 21, 2015, at the Chapman University, Faculty Athenaeum from 5 .to 9 p.m. The keynote speaker will be Dr. Gene Alexander, from Chapman University. The title of his talk is "From Maker to Leader: SoCal Technology Startups 2015". We would like to invite all LASPE members and guests to participate in this memorable event. Incidentally, Dr. Steve Cheung LASPE's Senior Past Chair, will be installed as President of OCEC for FY 2015-2017.



Dr. Gene Alexander is the Director of Technology Entrepreneurship in the Leatherby Center at Chapman University and Director of Launch Labs, the Chapman Student Incubator. Previously, he was VP & GM for Motion Analysis Corporation. He was CEO of MaMoCa which has the capability to transform people's movements into the motions of animated characters. He co-founded Therapeutics which produces 3D printed total knee replacement systems. Gene was a Lecturer and Senior Research Engineer in the Department of Mechanical Engineering at Stanford University. He holds seven issued US patents.

Dr. Alexander's talk will focus on the unique role engineers play in the economic future of Southern California. Topics will include the current state of the Southern California startup ecosystem, the resources available to early stage companies, current best practices in startup methodology, and new funding opportunities. The role of engineers, scientists, and other technologists in building the future economy of Southern California will also be discussed. He will also mention the Business Plan Competition he organized this April. The total award amount was over \$300,000 and more than 30 universities participated.

COST: \$30 per guest. Please send an email to OCEC Treasurer, Phil Ridout (pridout@socal.rr.com) with the guests' names, company/affiliation, and contact phone numbers, by July 9, and mail a check (made payable to OCEC) to Phil Ridout, 6962 Los Amigos Circle, Huntington Beach, CA 92647 prior to July 14. Parking will be \$3 for 4 hours; or \$5 for 12 hours. Only registered invitees and paid guests will be admitted to this special event. Seats are limited, first come, first served.

SCIENCE FAIR THANK YOU LETTER



CURRICULUM, INSTRUCTION, & PROFESSIONAL DEVELOPMENT
Science Curriculum Office
1209 E. 32nd Street, Room 7, Signal Hill, CA 90755
(562) 987-8000 Ext. 2963 FAX: (562) 425-8448



June 8, 2015

Dear Mr. Ntuk,



On behalf of the LBUSD Science Fair Steering Committee, thank you for your generous donation of \$500 to make our 20th Annual District Science Fair possible. We recognize how highly you have prioritized this event and are humbled by your investment. In case you were not able to experience it personally, I am always happy to include these images capturing some of the special moments that the Science Fair makes possible.

The students are always proud to wear their T-shirts, logo pins, and ribbon badges, at the Science Fair and as a badge of honor at their schools afterwards. Your generous donation helped provide these awards for each of the student participants.

We deeply appreciate how your sponsorship allows us to provide this unique experience to our young scientists –making a lasting impression by encouraging students to tackle challenges and seek opportunities as they plan for their future...and ours. Again, thank you for making this possible.

Sincerely,

Eric D. Brundin
LBUSD Science Curriculum Leader



ANOTHER SCIENCE FAIR THANK YOU LETTER

6-2-15

Dear Society of Petroleum Engineers,

Thank you for the \$200 you awarded me at the State Science Fair. I have always been interested in petroleum and geology. I intend to do another petroleum based project next year. Thank you again for the award!

Sincerely,
Jacob H. Nahama
6th Grade Laurel Glen Elementary
Bakersfield, CA

SPE STUDENT CHAPTER NEWS

USC SPE Chapter receives the prestigious SPE Gold Standard Award 2015

We extend our hearty congratulations and a big thank you to the USC Society of Petroleum Engineers Student Chapter Executive Board 2014-15 for all their efforts and dedication.



Dr. Iraj Ershaghi
(Faculty Advisor)

Top left: Khush Desai (Treasurer), Andrew Montecalvo (Events Coordinator), Lawrence Bustos (President), Kevin Arahana (Vice-President)

Bottom left: Chau Diep (Secretary), Marjan Sherafati (PhD Advisor), Leilani Rebolledo (Director of Community Outreach & Membership)

Chapter activities for the month:

Our special thanks to Dr. Steve Cheung for giving the chapter members a wonderful opportunity to attend the talk by Dr. Michael Bruno, President of Geomechanics Technologies at LA SPE Petroleum Technology Forum held on June 9, 2015.

LASPE BOARD MEETING MINUTES
BOARD OF DIRECTORS MEETING, APRIL 14, 2015

Attendance:

Ted Frankiewicz, Section Chair 2014-2015 and Board Member 2017
Steve Cheung, Senior Past Chair OCEC Liaison (Proxy Robert Schaaf)
Baldev Gill, Junior Past Chair (Proxy – Uduak Ntuk)
Christian Vaccese, Section Vice Chair through 2015 (Proxy - Baldev Gill – Uduak Ntuk)
Brian Tran, Scholarship Committee and Board Member through 2016
Uduak Ntuk, Outreach Committee, Student Chapter Committee Liaison and B M through 2015
Robert Schaaf, Program Chair and Board Member through 2016
Ali Khan, Treasurer
Scott Hara, Outreach Committee

Committee Members and Affiliates:

Rick Finken, Past Treasurer
Firas Khan, UCI Student Chapter
Anjan Chidambaram, UCI Student Chapter
Uyen Nguyen, UCI Student Chapter
Asim Sakour, UCI Student Chapter
Yangyao Ding, UCLA Student Chapter Social Chair
Rebecca Chen, UCLA Student Chapter, President
Everardo Ibarra, UCLA Student Chapter, Vice President
Aqil Pasua, UCLA Student Chapter, EVP
Harrison Beamer, UCLA Student Chapter, Treasurer

Proceedings:

- ❖ **Call to Order – 10:30 AM;** The presence of a Quorum of Board members was confirmed by the Chair (T. Frankiewicz)
- ❖ **Approval of the Agenda.**
 - i) Robert Schaaf moved to approve the Agenda of the day, Bryan Tran Seconded. Motion Approved
- ❖ **Approval of the Minutes of the Meeting of March 10, 2015**
 - i) Brian Tran moved to approve the March Minutes and Brian Tran seconded. Motion Approved
- ❖ **WNAR Meeting Status Report**
 - Status of Technical Program and Panel Discussions: all the Technical Programs and Panel Discussion Members are scheduled and confirmed.
 - Exhibitors and Sponsors: so far we have 20 out of 33 Exhibitors of which 1 is Platinum, 2 are Gold and 2 are bronze, 13 spots remain to be filled in.
 - Short Courses

**LASPE BOARD MEETING MINUTES
BOARD OF DIRECTORS MEETING, APRIL 14, 2015**

- ii) Request Board Approval for Section to pay $8 \times \$375 = \3000 to send up to 8 students to short courses (2 per course). This would be covered by the \$12,000 we have budgeted for Student Chapter support.
2 Short Courses were canceled, the remaining are: Thermal Recovery, Digital Engineering, Fracturing, Water Flood.
Uduak Ntuk moved to approve the payments for the 8 Students. Motion Approved
- Registrations and Financial Status Report
 - i) Request Board Approval for Section to pay up to $\$75 \times 100 = \7500 to send up to 25 students per Chapter to the WRM, including up to \$25 per student in travel costs. This is an anticipated expenditure that would be covered by the \$12,000 we have budgeted for Student Chapter support. Approved by the Board for USC Students as other schools are not present.
- Volunteers (student and professionals) needed at the WRM
A total of 60 – 80 Student Volunteers are needed for Tuesday 27 (half day) and for Wednesday and Thursday. This number is being organized by Lawrence Bustos (USC Chapter President).
- ❖ **Nominations Committee – need 1 addition to the Board of Directors**
 - Nominations Procedure – nominations to be identified to and pursued by the Nominations Committee
- ❖ **Golf Tournament Committee Activities & Status**
 - We have 72 spots open, for sponsorship information and requests please contact Baldev Gill.
- ❖ **REPORTS:**
 - Secretary's Report - Christian
 - Treasurer's Report – Ali Khan and Rick Finken
LASPE's value at the end of March is \$82,912 consisting of \$48,912 in working funds and \$34,000 in investments.
The above does not include 2015 WRM seed funds. Those monies from income and for expenses are being held in the 2015 Western Regional Meeting checking account. These are to be reported separately by the conference's co-chairs. Seed money provided for 2015 WRM operations totals \$41,337 through March 2015.
 - Program Chair – Robert Schaaf
 - i) Forum Speakers for May-June 2015
One speaker will be Ms Val Lerma and the topic will be "Managing your future as a Petroleum Engineer".
 - Scholarship Committee – Brian Tran
 - i) Request Board Approval of the Scholarship Program for 2015. Scholarship funds to be awarded as approved in the Section Budget.
Board Approved Scholarship funds for this year total \$22,000.

**LASPE BOARD MEETING MINUTES
BOARD OF DIRECTORS MEETING, APRIL 14, 2015**

- Outreach Activities – Scott and/or Uduak
- YP Activities – Brian Tran and/or Siarhei Piletski
- Awards Committee – Robert Schaaf
- Orange County Engineering Council (OCEC) – Steve Cheung

❖ **Adjournment**

The meeting was adjourned at 11.33 am
(Pacific Time Zone).
Respectfully submitted,

Christian Vaccese
LASPE Vice Chair and Secretary.

**LASPE BOARD MEETING MINUTES
BOARD OF DIRECTORS MEETING, MAY 12, 2015**

Attendance:

Ted Frankiewicz, Section Chair 2014-2015 and Board Member 2017
Steve Cheung, Senior Past Chair OCEC Liaison
Baldev Gill, Junior Past Chair
Christian Vaccese, Section Vice Chair through 2015 (Proxy – Baldev Gill)
Brian Tran, Scholarship Committee and Board Member through 2016
Uduak Ntuk, Outreach Committee, Student Chapter Committee Liaison and B M through 2015
Robert Schaaf, Program Chair and Board Member through 2016
Sue Weinfurther, Treasurer
Scott Hara, Outreach Committee

Committee Members and Affiliates:

Rick Finken, Acting Treasurer
Firas Khan, UCI Student Chapter (not present)
Anjan Chidambaram, UCI Student Chapter (not present)
Uyen Nguyen, UCI Student Chapter (not present)
Harmony N, UCI Student Chapter
Yangyao Ding, UCLA Student Chapter Social Chair (not present)
Rebecca Chen, UCLA Student Chapter, President (not present)
Everardo Ibarra, UCLA Student Chapter, Vice President (not present)
Aqil Pasua, UCLA Student Chapter, EVP (not present)
Harrison Beamer, UCLA Student Chapter, Treasurer (not present)

**LASPE BOARD MEETING MINUTES
BOARD OF DIRECTORS MEETING, MAY 12, 2015**

Proceedings:

- ❖ Call to Order – 10:30 AM; The presence of a quorum of Board Members was confirmed by the Chair (T. Frankiewicz)
 - ❖ Approval of this Agenda
Robert Schaaf move to approve the Agenda, Steve Cheung seconded. Approved
 - ❖ Approval of the Minutes of the Meeting on **April 14, 2015**
The Minutes for April were not available so Approval was delayed until the next Board meeting.
 - ❖ WNAR Meeting Status Report
 - Revenue from Registrations – breakdown on types of registrations
 - Revenue from Exhibitors, Sponsors, Short Courses, & Field Trips
 - Registrations and Financial Status Report
 - i) **Request Board Approval for Section to pay for actual WRM 2015 Student Chapter Member Registrations up to a total of 100 Students – irrespective of which Chapter from which they came. UCI: 8 of 8 UCLA: 10 of 10 CSULB: 14 of 14 USC: 68 of 73 This is expenditure is covered by the \$12,000 budgeted for Chapter support.**
Robert Schaaf moved to approve payments as above, Steve Cheung seconded.
Approved
- Additional Report info:**
Attending of 150 students from 20 universities.
Sponsored students: UCI 8, UCLA 10, CSULB 14, USC 68. From \$12000 budget (\$7500 student support, \$3000 short courses)
Funds originally approved for other schools that were not used can be used for USC
- ❖ Golf Tournament Status report – Participation and Revenue
Richard Finken reported that there were a total of 168 golfers and a net positive revenue of approximately \$12,000.
- ❖ Nominations Committee – need 1 addition to the Board of Directors
 - Steve Cheung placed the name of Sergey Piletski in Nomination to be on the LA Basin Board of Directors. After discussion, Robert Schaaf moved to approve the nomination of Sergey Piletski, Susan Weinfurther seconded. Motion Approved
- ❖ REPORTS:
 - Secretary's Report – Christian V. Not present
 - Treasurer's Report – Rick Finken is Acting Treasurer Susan Weinfurther has agreed to be Treasurer and will assume responsibilities in June.
LASPE's value at the end of March is \$99,712 consisting of \$65,774 in working funds and \$33,937 in investments.

**LASPE BOARD MEETING MINUTES
BOARD OF DIRECTORS MEETING, MAY 12, 2015**

The above does not include 2015 WRM seed funds or net revenue from income and expenses held in the 2015 Western Regional Meeting checking account. These are to be reported separately by the conference's co-chairs. Seed money provided for 2015 WRM operations totaled \$41,337 through April 2015.

- Program Chair – Robert Schaaf
 - i) Forum Speaker for June 2015 – Forum Program for September 2015
We have the Speaker for June 2015 – Dr. Michael Bruno
- Scholarship Committee – Brian Tran
Announcement of and the application for Scholarships are in the newsletter and on the LASPE website. Submission Deadline: June 30th. Award ceremony will be at either the September or the October Forum.
- Outreach Activities – Scott and/or Uduak
Soft Skill Workshop May 16. Thank you for the sponsor for Long Beach unified school district.
8:30-12:30 May 19. CA State Science Fair
A THUMS boat tour for UCLA, USC, UCI has been scheduled.
Mesa days: more than 1000 students participated at CSULB and at 1000 USC. An additional 600 students participated in the regional event. Scott Hara requested that \$2000 be included in next year's Section Budget to support having 1000 bags for the next school year Mesa Days events and for student going to Middle and high school
- YP Activities – Brian Tran and/or Siarhei Piletski
Next Event is scheduled for May 28 at 5:30pm in Long Beach.
- Awards Committee – Robert Schaaf – no report
- Orange County Engineering Council (OCEC) – Steve Cheung
Edward lab tour. Looking for more volunteers for OCEC. More tour ideas next year for members. Volunteer Appreciation Luncheon.
Steve Cheung is requesting permission to include a link to a Soft Skills Survey questionnaire in the LA Basin newsletter.

❖ Student Chapter Reports

- New Slates of Officers: USC-UCI-UCLA -CSULB
- UCLA to complete "Establishment Paperwork"
- Activities Scheduled – Newsletter Reports
- UCSD

❖ **Adjournment**

The meeting was adjourned at 11.30 am
(Pacific Time Zone).
Respectfully submitted,

Christian Vaccese
LASPE Vice Chair and Secretary.

SELECTED SPE UPCOMING EVENTS 2015 - 2016

Date	Title
September 9* - WEDNESDAY -	Understanding Liquid Loading Will Improve Well Performance Robert Sutton Robert P. Sutton Consulting
September 16 - WEDNESDAY -	JOINT MEETING with Conservation Committee of California Oil and Gas Producers Meeting will be at The Grand in Long Beach and will feature a speaker on the vagaries of oil & gas demand and & supply
September 28-30	SPE Annual Technical Conference & Exhibition (ATCE) http://www.spe.org/atce/2015/
	Note: * LASPE Board meeting starts at 10:30 a.m. and all members are welcome to observe

DEADLINES FOR NEWSLETTERARTICLE SUBMISSION

Month	1st Submission Call	Last Submission Call	No Submissions Accepted After	Newsletter Publish Date
September	8/17/15	8/24/15	8/29/15	9/1/15
October	9/14/15	9/22/15	9/28/15	10/1/15
November	10/19/15	10/26/15	10/30/15	11/2/15
December	11/16/15	11/23/15	11/28/15	12/1/15

SERVICES OFFERED

Secure Your Future

Friendly, Professional Investment Manager.



Gary N. Clark, Ph.D., CFA

*“Dedicated to improving
your retirement portfolio
investment returns.”*

- SPE Member
- No Charge for Initial Consultations

(818) 236-3794

gnclark@clarkassetmgmt.com

ClarkAssetMgmt.com



Clark Asset Management
+ ASSOCIATES, INC. Since 1989

Scott W. McGurk

**Petroleum Engineering Consulting
36 Years of Diversified Experience**

**Asset Development
Reservoir Management
Drilling Programs
Waterflood Optimization
Tertiary Recovery / EOR
Reserves and Economic Evaluation
Acquisition and Divestitures**

714-403-9839

LOVESM@IX.NETCOM.COM

2014-2015 LASPE OFFICERS & BOARD

Name	Position	E-mail
Dr. Steve Cheung	Senior Past chair	steveior@yahoo.com
Baldev Gill	Junior Past Chair	Baldev.Gill@longbeach.gov
Dr. Ted Frankiewicz	LASPE Chairperson 2014-2015	tfrankiewicz@specservices.com
Christian Vaccese	Vice Chair - Board member through 2015	c.vaccese@gmail.com
Susan Weinfurther	Treasurer - Board member through 2018	Susan.Weinfurther@crc.com
Rick Finken	Vice-Treasurer	rdfinken@gmail.com
Christian Vaccese	Secretary - Board member through 2015	c.vaccese@gmail.com
Robert Schaaf	Board member through 2016	rschaaf@socal.rr.com
Uduak Ntuk	Board member through 2014	uduak.ntuk@longbeach.gov
Brian Tran	Board member through 2016	briantran01@yahoo.com
Sergey Piletski	Board member through 2018	Sergey.Piletski@crc.com
Committee Chairs		
Robert Schaaf	Awards	rschaaf@socal.rr.com
Robert Schaaf	Forum and Program Chair	rschaaf@socal.rr.com
Mike Filbey	Golf	hbbigdogs@yahoo.com
Uduak Ntuk	Community Outreach/STEM	uduak.ntuk@longbeach.gov
Dr. Sam Sarem	Membership	Sam4IPRC@aol.com
Dr. Iraj Ershaghi	Publication Mentor	ershaghi@usc.edu
Brian Tran	Scholarship	briantran01@yahoo.com
Uduak Ntuk	Student Chapter Liaison	uduak.ntuk@longbeach.gov
Dr. Jalal Torabzadeh	Student Chapter Advisor - CSULB	jalal.torabzadeh@csulb.edu
Safir Wazed	Student Chapter President - CSULB	safirwazed@live.com
Dr. Iraj Ershaghi	Student Chapter Advisor – USC	ershaghi@usc.edu
Rahul Ranjith	Student Chapter President - USC	USCstudents@spemail.org
Dr. Frank Shi	Student Chapter Advisor - UCI	fgshi@uci.edu
Uyen Nguyen	Student Chapter President - UCI	nguyenuh@uci.com
Rebecca Chen	Student Chapter President - UCLA	rebeccayuchen90@gmail.com
A.B. Gorashi	Training	goras9@aol.com
Siarhei Piletski	Young Professional	Siarhei.Piletski@crc.com
Dr. Steve Cheung	Nominations	steveior@yahoo.com
Larry Gilpin	Newsletter & Website Editor / Publisher	Larry@4thForge.com
Tom Walsh	WNAR Director 2012-2015	twalsh@petroak.com
SPE International	Contact for Sections	sections@SPE.org