

THE TOOLS OF SURVEILLANCE

SANDRA L. FISHER-GRAINER
HERNANDO COUNTY MOSQUITO CONTROL

NACCHO

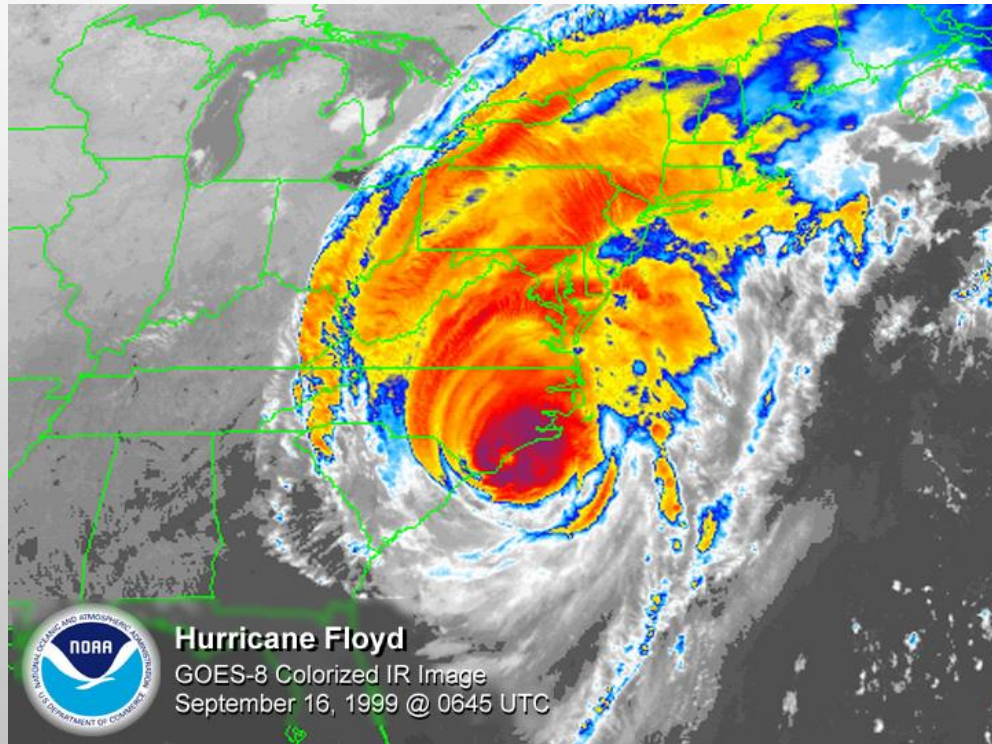
National Association of County & City Health Officials

2019 Vector Summit

kizola



AND THEN



WHAT ARE YOU TARGETING?

❖ EGGS

- ❖ RESISTANCE TESTING
- ❖ ABUNDANCE



❖ LARVAE

- ❖ RESISTANCE TESTING
- ❖ ABUNDANCE
- ❖ SITE VISITS/BREEDING SITE INSPECTIONS



❖ ADULTS

- ❖ DISEASE SURVEILLANCE
- ❖ ABUNDANCE
- ❖ NUISANCE



EGGS-CONSIDER THE SPECIES



Egg rafts



Ovicups



varies

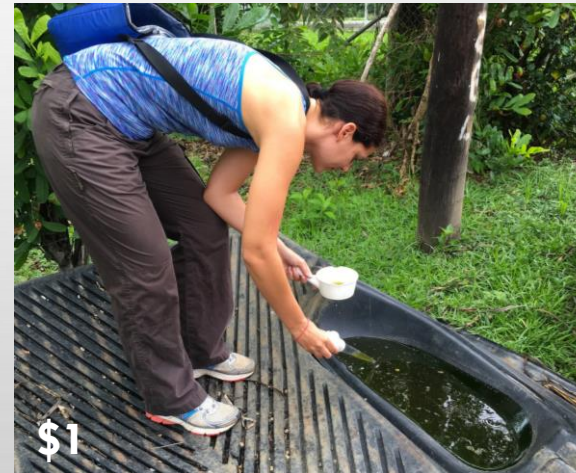


- (A) Standard (500 mL) lethal ovitrap (LO);
- (B) National Environmental Agency Singapore sticky ovitrap (SO)
- (C) MosquiTRAP sticky ovitrap (SO)
- (D) Biogents Gravid Aedes Trap (GAT)
- (E) Centers for Disease Control (CDC) Autocidal Gravid Ovitrap (AGO).

Trap'n'Kill



LARVAL SURVEILLANCE



ADULT SURVEILLANCE

- TRAP SELECTION DEPENDS ON SPECIES OR “STAGE” YOU ARE TARGETING-ARE THEY DAY BITING, NIGHT BITING, TRAP SHY, BREEDING HABITAT, GRAVID, RESTING, ETC
 - THIS WILL ALSO DETERMINE LURES

LURES



~\$33

Hexanoic Acid
Lactic Acid
Sodium Bicarbonate
Sodium Polyacrylate

ADULT SURVEILLANCE-CONTAINER BREEDERS

- OMNI-DIRECTIONAL FAY-PRINCE
 - WITH OR WITHOUT LURES, CO²
- BG SENTINEL I & II
 - WITH OR WITHOUT LURES, CO²



ADULT SURVEILLANCE- “STAGES”

RESTING TRAP

TARGETS FEMALES THAT HAVE TAKEN A BLOOD MEAL
AND ARE RESTING WHILE PRODUCING EGGS-MANY
SPP



GRAVID TRAP

TARGETS FEMALES SEEKING AN OVIPOSITION
LOCATION-WORKS BEST FOR CULEX SPP



CDC

Frommer
Updraft



ADULT SURVEILLANCE-THE REST

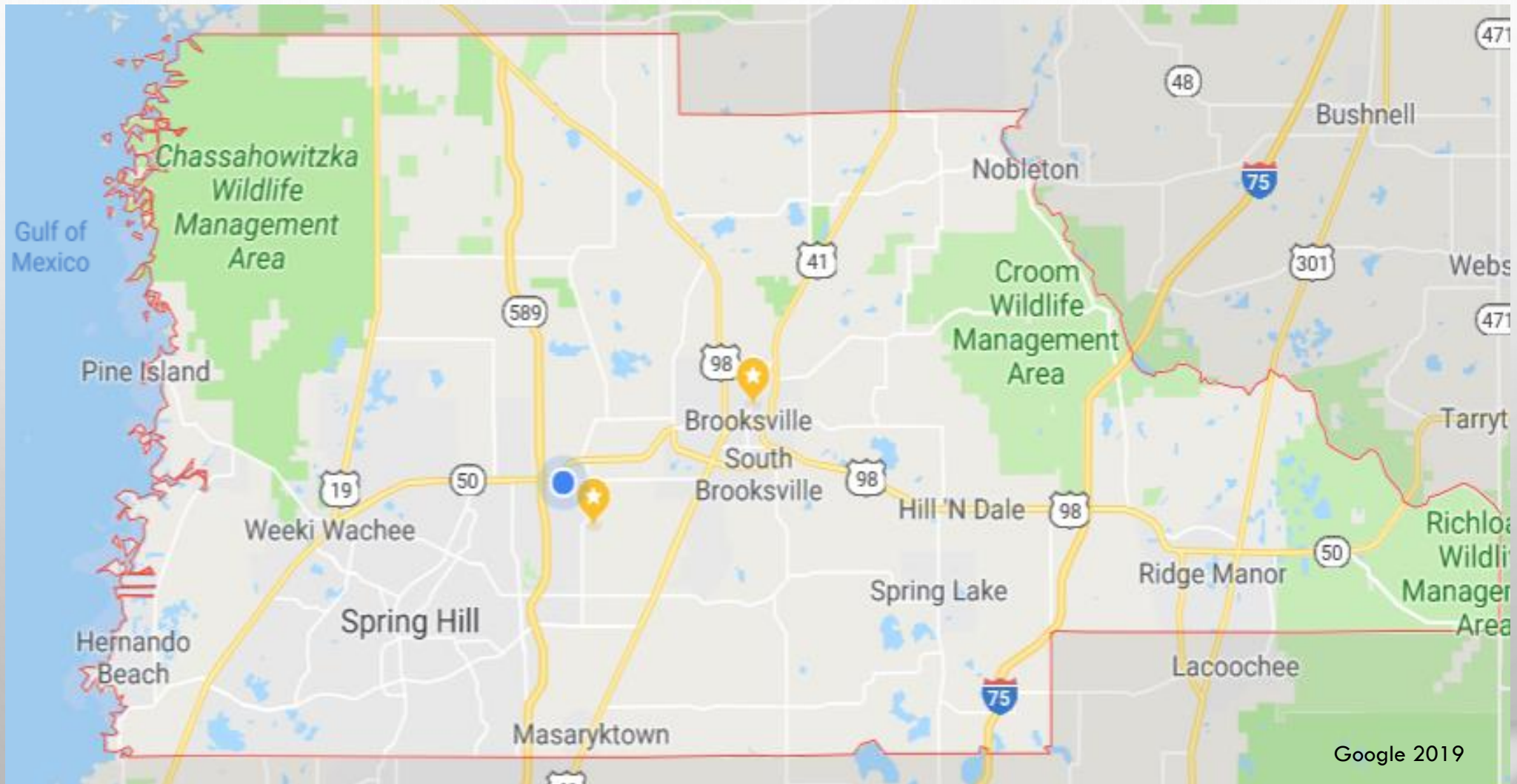
NEW JERSEY



CDC MINIATURE

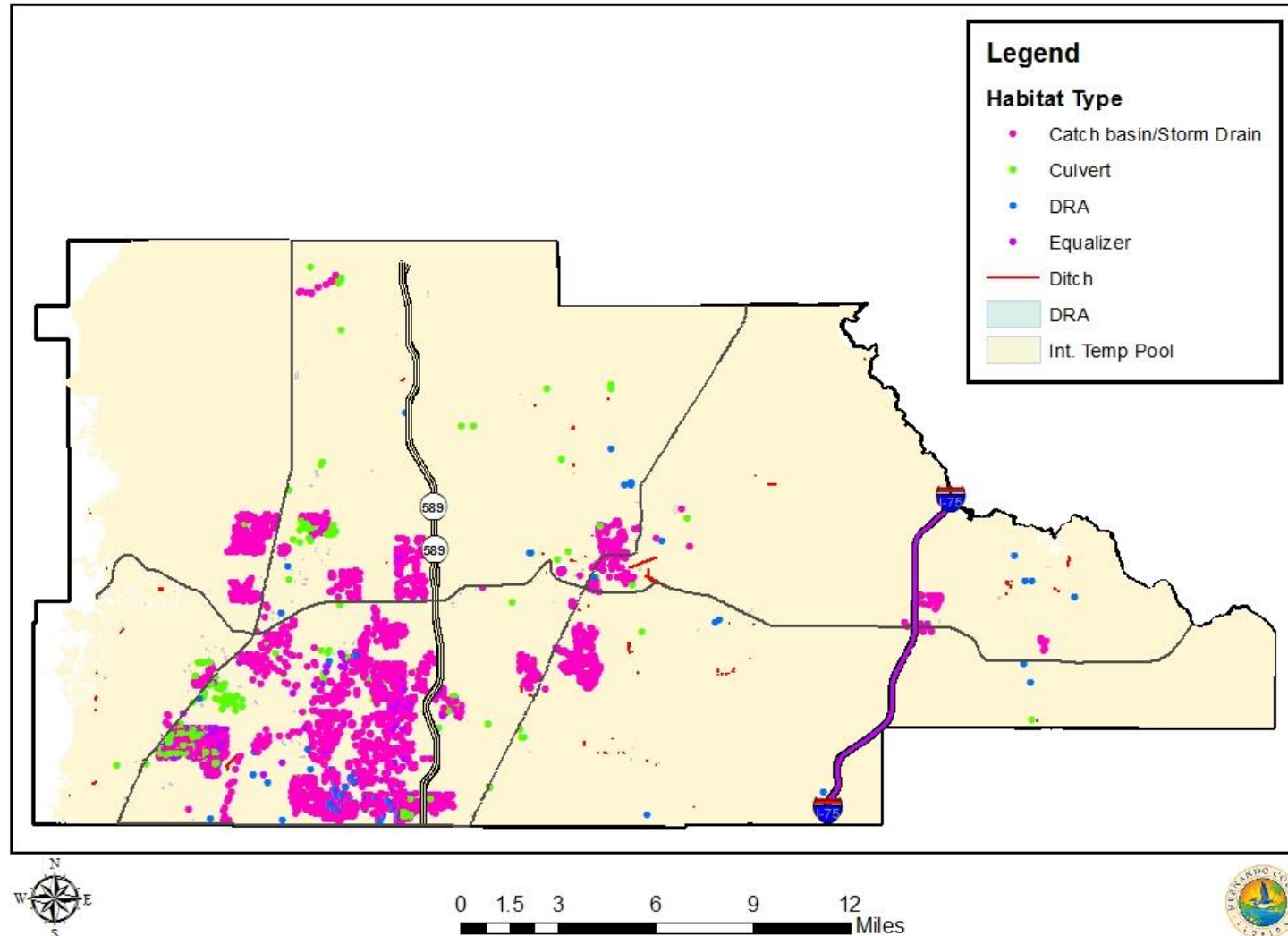


MAPS!!!!



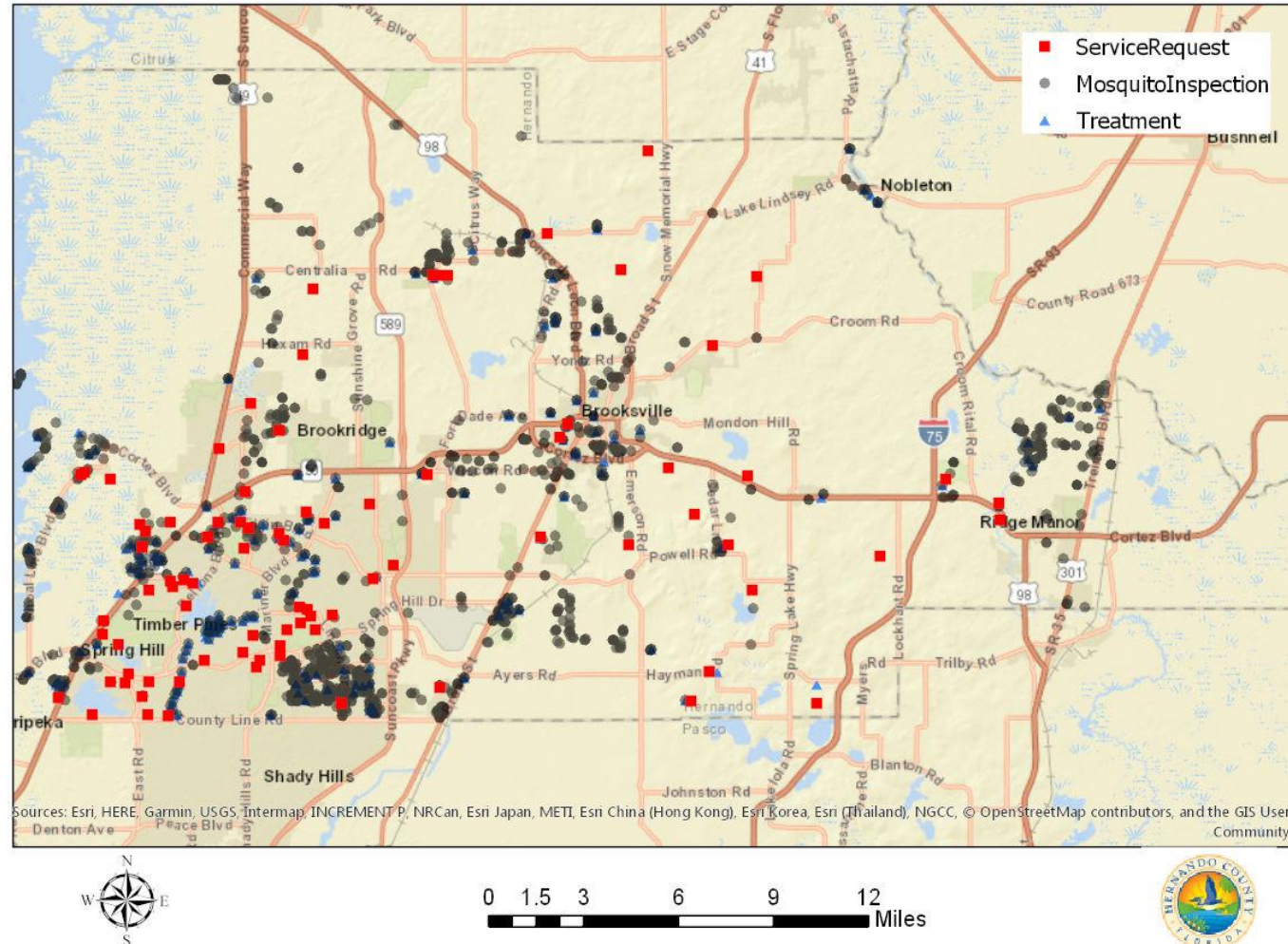
MAPS-FEATURES

Hernando County Breeding Sites



MAPS-DATA

Hernando County Service Requests, Treatments and Inspections FY 2019



Traps and accessory suppliers:
BioQuip.com
JohnWHock.com
Mosquito Control Product Vendors

Sandra Fisher-Grainger
Hernando County Mosquito Control
sfisher-grainger@hernandocounty.us
352-540-6552