

Maxillary palps and proboscis
about the same length

Anopheles

Maxillary palps much shorter than
proboscis

Tip of abdomen
ends in a point

Aedes

Tip of abdomen is
rounded or squared

Base of subcostal wing vein
does NOT have patch of
setae (hairs) on underside of
wing

OR

Wings extend just to tip of
abdomen

Culex

Base of subcostal wing vein on
underside of wing with patch of
setae (hairs)

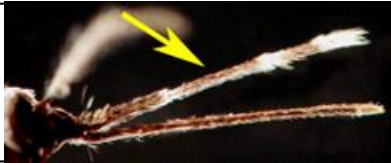
OR

Wings extend beyond tip of
abdomen

Culiseta

**Quick Guide to Genera of
CONUS, limited to *Aedes*,
Anopheles, *Culex*, and
*Culiseta***

Maxillary palps and proboscis about the same length



Maxillary palps much shorter than proboscis

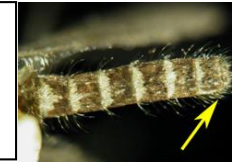


Anopheles

Tip of abdomen ends in a point



Tip of abdomen is rounded or squared



Aedes

Base of subcostal wing vein does NOT have patch of setae (hairs) on underside of wing

OR

Wings extend just to tip of abdomen

Base of subcostal wing vein on underside of wing with patch of setae (hairs)

OR

Wings extend beyond tip of abdomen



Culex

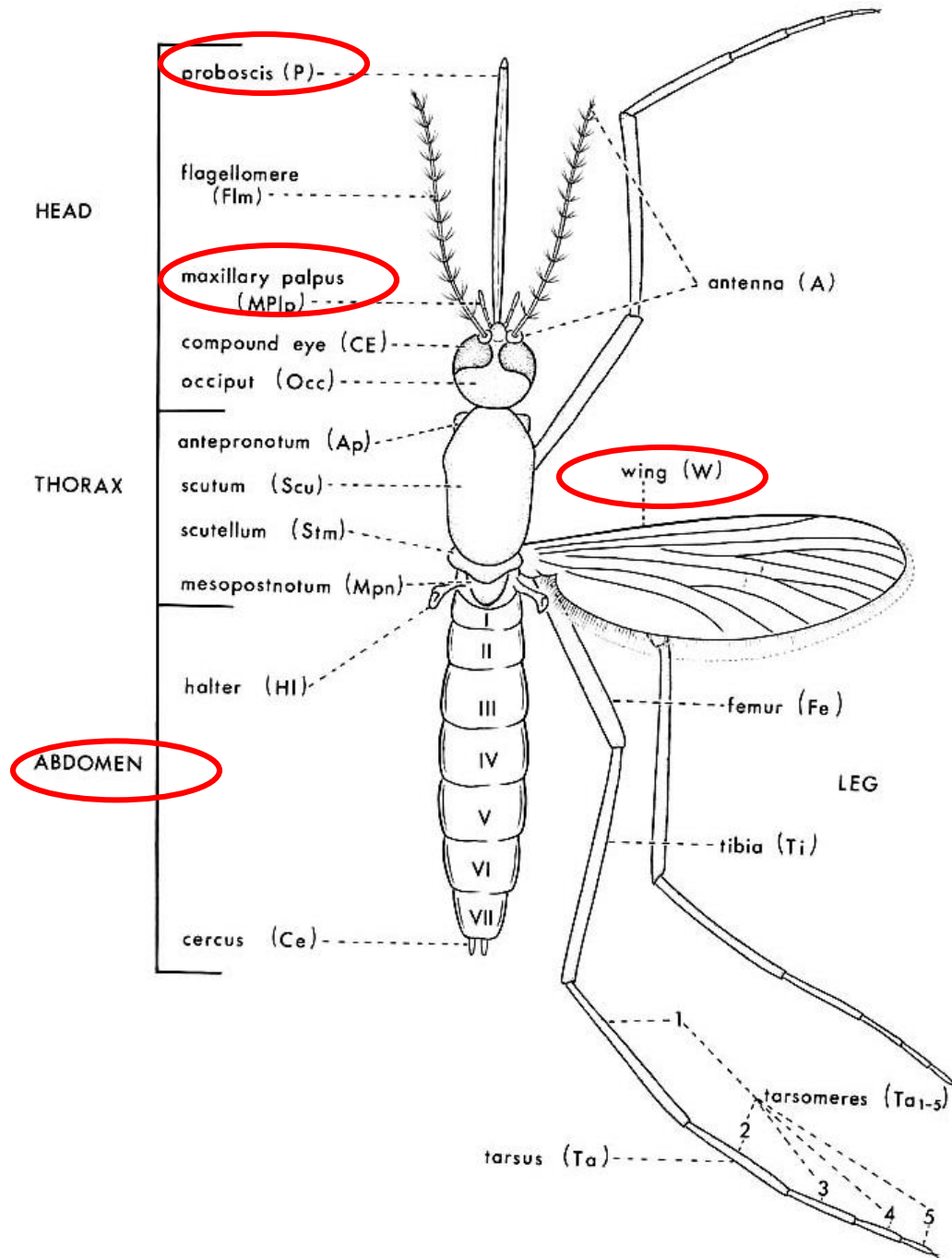


Culiseta

Quick Guide to Genera of CONUS, limited to *Aedes*, *Anopheles*, *Culex*, and *Culiseta*

Based on Identification and Geographical Distribution of the Mosquitoes of North America, North of Mexico by Richard F. Darsie, Jr. and Ronald A. Ward (2005)

From Darsie and Ward,
1981



For Quick Key:

Palps
Proboscis
Abdomen
Wings
Subcostal vein –
see next page

