



Managing data for use in GIS and statistical applications.

Best practices in planning and design

NACCHO 2019 Vector Summit April 16, 2019

Pittsburgh, PA

Andrew Ruiz, MSPH Health Scientist

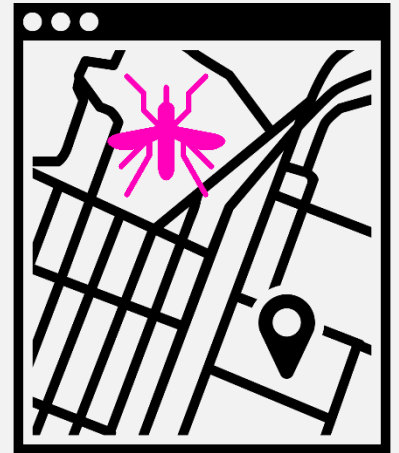
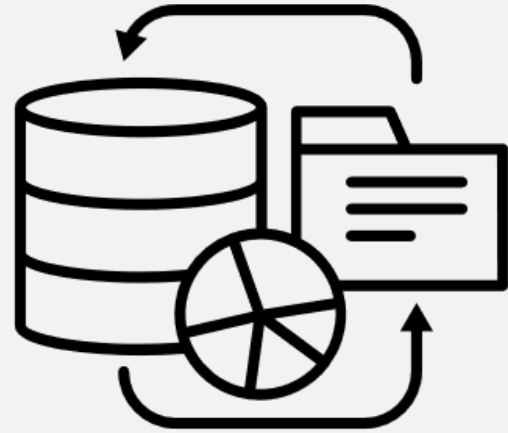
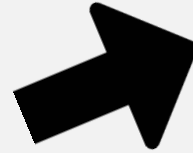
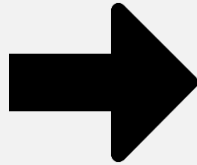
Water, Food and Environmental Health Services

aruiz3@cdc.gov

What we will talk about today

- **Organizing data for use**
- **Fun with pivot tables**
- **Using relational databases**

Organizing data for use

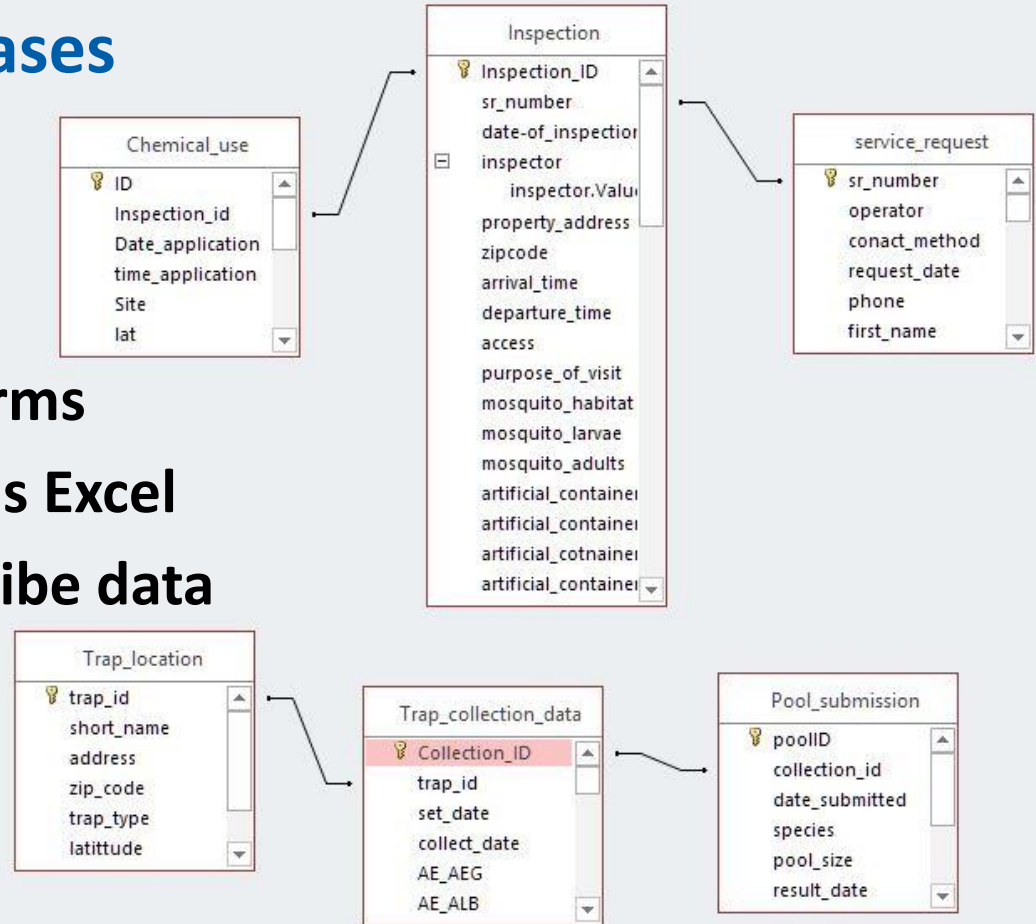


Organizing data for use

Weekly Trap Numbers											
June						July					
25-Jun						5-Jul					
Fire Station CDC Light			Fire Station Gravid			Fire Station CDC Light		High School CDC Light		Fire Station Gravid	
Species	Count		Species	Count		Species	Count	Species	Count	Species	Count
VEX	435		CX quinx	625		columbiae	2003	Ae VEX	550	CX quinx	365
Ps col	228		Culex restuans	24		aedes vexans	1623	Ps columbiae	255	Culex restuans	80
quinx	155		aedes japonicu	14		Ps ciliata	1002	Cx quinquefasciatus	26		
Aedes aegypti	1					Cx quinx	36	Cs melanura	12		
						Culex restuans	6				

Using relational databases

- Not as intuitive as Excel
- Allows to query data
- Can create data entry forms
- Tables can be exported as Excel
- Built in function to describe data



What we talked about today

- **Organizing data for use**
- **Fun with pivot tables**
- **Using relational databases**

Thank you!

Feel free to contact me with questions

Andrew Ruiz

404.498.1846

aruiz3@cdc.gov

For more information, contact NCEH

1-800-CDC-INFO (232-4636)

TTY: 1-888-232-6348 www.cdc.gov

Follow us on Twitter [@CDCEEnvironment](https://twitter.com/CDCEEnvironment)

The findings and conclusions in this report are those of the authors and do not necessarily represent the official position of the Centers for Disease Control and Prevention.

