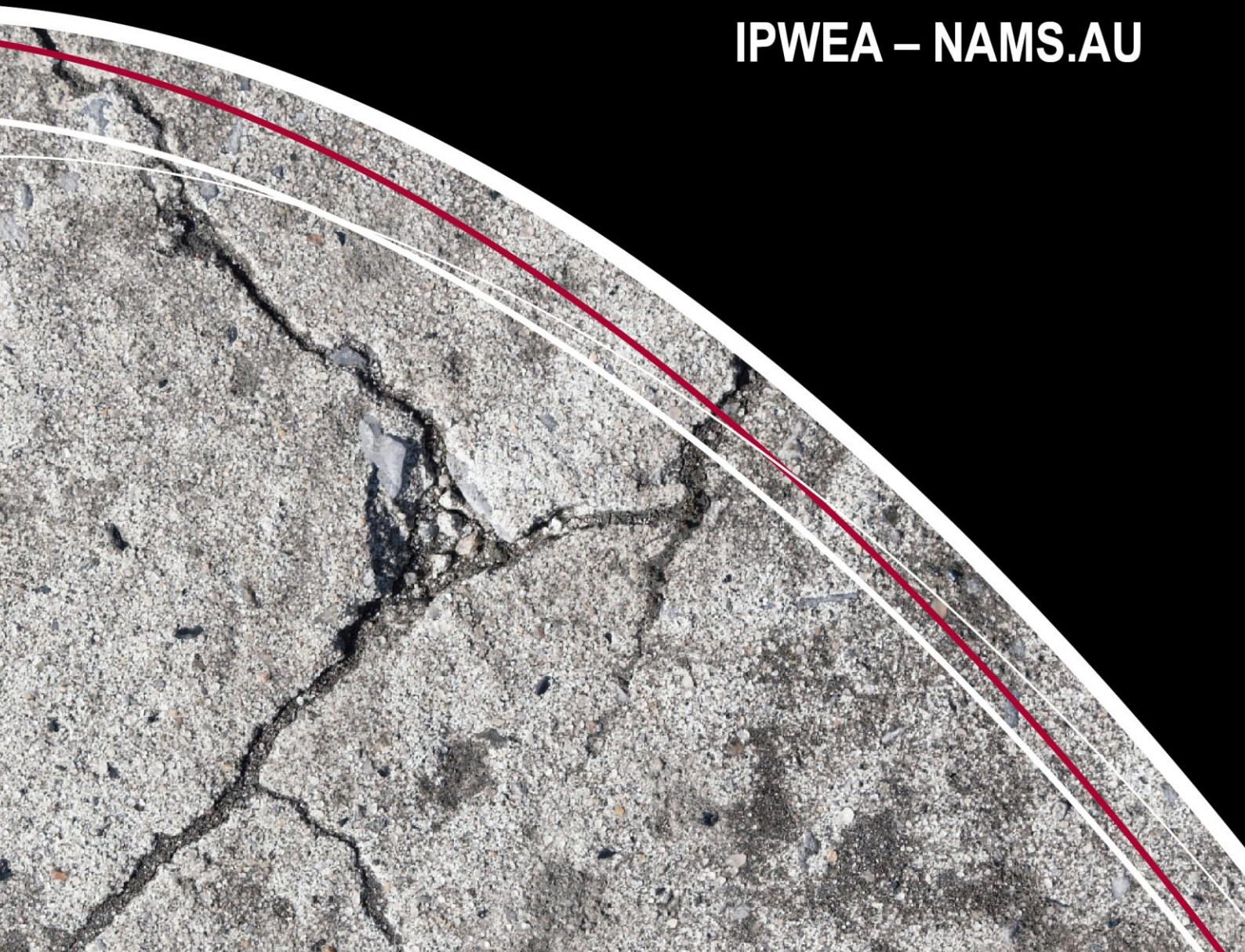




CONDITION ASSESSMENT AND ASSET PERFORMANCE GUIDELINES

Practice Notes 1
FOOTPATHS AND CYCLEWAYS

IPWEA – NAMS.AU





CONDITION ASSESSMENT AND ASSET PERFORMANCE GUIDELINES

PRACTICE NOTE 1 – FOOTPATHS & CYCLEWAYS

IPWEA NAMS.AU has recognised the need for industry guidelines to assist practitioners with Asset Management and Financial Planning. The first three Practice Notes have been developed for Condition Assessment and Asset Performance. A fourth Practice Note is now available for Asset Management for Small Communities. A series of Practice Notes is being researched and will be published to assist with the important task of how best to carry out condition assessments for various classes of assets as well as other important aspects of asset and financial management.

The aim is to foster a national approach and encourage consistency of data and outputs. These documents will be subject to review and be updated as further and better information comes to hand.

Practice Notes may be Purchased

Three Practice Notes are available and more are being developed to provide guidance to practitioners in the field for carrying out condition assessment inspections on a range of physical infrastructure asset types including:

- PN1 Footpaths (published Nov 2007)
- PN2 Kerb and Channel(Gutter) (published June 2008)
- PN3 Buildings (published June 2009)
- Storm Water Infrastructure*
- Water and Sewerage Infrastructure*
- * **in development**

Practice Note 4 is available and others are also being developed to give nationally consistent guidelines on:

- PN4 Asset Management for Small, Rural or Remote Communities (AM4SRRC) (published March 2011)
- Long-term Financial Planning (LTFP)*
- Level of Service (LoS)*
- * **in development**

Order Forms. To purchase your copy of the individual Practice Notes, as they become available, visit www.ipwea.org.au/practicenotes.

Enquiries. IPWEA National p: +61 (2) 8267 3001; e: national@ipwea.org.au

A Preamble Document is also available Complimentary (no charge)

A complimentary Preamble Document that sets out the generic principles applicable to all the above and other types of assets is also available. It covers the basic concepts of condition assessment, performance measurement, risk and data management. Practice Notes expand on each asset class.

Visit www.ipwea.org.au/practicenotes.



PRACTICE NOTE 1

FOOTPATH / CYCLEWAYS INSPECTION AND PERFORMANCE GUIDELINES

Note to Readers. While information contained in these Practice Notes is believed to be correct at the time of publication, the Institute of Public Works Engineering Australia and its NAMS.AU Group, Working Parties and other contributors to these Practice Notes, do not accept any liability for its contents or for any consequence arising from its use.

Copyright. This work is copyright of the Institute of Public Works Engineering Australia (IPWEA) and no part may be reproduced by any person without prior written permission from IPWEA. Requests and enquiries concerning reproduction and rights should be addressed to IPWEA at national@ipwea.org.au.

For further information on IPWEA NAMS.AU and its resources visit www.ipwea.org.au/nams.

Acknowledgements. The provision of documentation and information used during the compilation of these Practice Notes is acknowledged with much appreciation by IPWEA. Our aim has been to tap into the most up-to-date practical experience being demonstrated by users around Australia. Their willingness to make their data and systems readily available means all users of these Guidelines will benefit from their collective wisdom. The sources of material reproduced in the Guidelines are noted throughout the document.

We are also indebted to those who have willingly given their time to review and provide comment as these Guidelines have been developed, to ensure we are always reflecting best practice in the field. Those who have been part of the Review Team and have provided comment are acknowledged as follows:

- Andrew Crotty – South Perth Council
- Aneurin Hughes – Cardno Consultants
- Daryl Reilly – Logan Council
- Duncan Sinclair-MWH Consultants
- Helen Rooth-Muswellbrook Council
- Kim Geedrick-Brisbane City Council
- Kirk Richardson-Onkaparinga Council
- Lei Parker-Eurocoast Council
- Paul Kellick-Joondalup Council
- Richard Freer-Hewish – Opus International - Western Australia
- Robert Molyneux
- Ross McPherson, Roger Byrne-GHD Consultants
- Stephen Walker-Salisbury Council
- Statewide Mutual NSW
- Tim Cornford-Woolongong Council

Note

These Practice Notes have incorporated material kindly provided by Statewide Mutual in New South Wales. While Councils in NSW may find application of these Practice Notes beneficial, they are reminded that, for audit purposes, they should continue to comply also with the Best Practice Manual for Footpaths published by Statewide Mutual NSW.



TABLE OF CONTENTS

PREAMBLE	4
1.0 SCOPE OF THESE GUIDELINES	4
2.0 LEVEL OF SERVICE	5
3.0 COUNCIL'S DUTY OF CARE	7
4.0 FOOTPATH INSPECTIONS	8
5.0 FOOTPATH POLICY	10
6.0 RISK ASSESSMENT	11
6.1 Core Approach	11
6.2 Advanced Approach	11
7.0 FOOTPATH DAMAGE FACTORS	13
7.1 Footpath Trees	13
7.2 Driveway Crossings	13
7.3 New Subdivision Footpaths	13
8.0 RATING SYSTEM FOR CONDITION ASSESSMENT	14
8.1 Core Approach	14
8.2 Advanced Approach	14
9.0 FOOTPATH CONDITION DATA COLLECTION	15
9.1 Complaints/Requests System	15
9.2 Formal Inspection Program	16
9.3 Council Staff Reporting of Defects/Needs	16
9.4 Path Openings	16
10.0 FOOTPATH INSPECTION PROCESS	17
10.1 Inspection Frequency/Inspector Qualifications	18
10.2 Advanced Data Collection	19
10.3 Workplace Health and Safety	19
11.0 DATA ANALYSIS	20
11.1 Works Program	20
12.0 LONG TERM PLANNING	21
13.0 REFERENCES	22
APPENDICES	23
Appendix 1 - Duty of Care Legal Issues	23
Appendix 2 - A Rating System for Footpaths	24
Appendix 3 - Risk Rating Guide Sheet	33
Appendix 4 - Example of Data Collection System	35
Appendix 5 - Worked Example of Footpath Data	41
Appendix 6 - Spreadsheet for Inspection Data Collection	43
Appendix 7 - Example of Sophisticated Data Collection	46
Appendix 8 - Footpath Trees	47
Appendix 9 - Footpath Openings Permit System	48



PRACTICE NOTE 1

FOOTPATH / CYCLEWAYS INSPECTION AND PERFORMANCE GUIDELINES

PREAMBLE

These Practice Notes for Footpath/Cycleway Inspection and Condition Assessment are the first in a series of Practice Notes being developed by the National Asset Management Strategy Group (NAMS.AU) of the Institute of Public Works Engineering Australia (IPWEA) to assist practitioners in applying best practice for condition assessment for various asset classes. The aim is to foster a national approach and encourage consistency of data and outputs. These will be living documents, subject to review and update as further and better information comes to hand.

1.0 SCOPE OF THESE GUIDELINES

It is intended that these Guidelines be applicable for ‘formal’ constructed footpaths and cycleways along road reserves, pathways and through Park and Recreation Reserves or other Council controlled land, and available for use by the general public. Footpath / Cycleways play an important role in the overall transport and recreational network, particularly given the greater emphasis on public transport and the increasing focus on pedestrian and cycle modes as a ‘healthy alternative’.

The term “footpath” used throughout should be taken to include ‘cycleways’ where applicable, but not including those bikeways that are part of the road carriageway. Various footpath construction materials are typically encountered, including but not limited to:

- Bituminous seal and asphaltic concrete
- Concrete slab pavers
- In-situ concrete (Reinforced or unreinforced) (Plain or exposed aggregate)
- Brick pavers or interlocking concrete pavers
- Composite (A combination of various of the above surface treatments)

Similarly footpath widths vary significantly from possible full-width construction (kerb line to property boundary) in CBD areas to a narrower “strip” of formed concrete footpath such as in residential streets.

These Guidelines are *not intended* to address ‘unconstructed’ pedestrian movement areas along road verges – i.e. grassed verges of road reserves in residential streets or along rural roads.

These Guidelines *do* address associated infrastructure adjacent to the formed footpath where such may impact on the service level provided by such footpath. Examples would include benches, signs, trees (roots), kerb ramps etc.