



Dolphin Tales

Galveston County Chapter of the International Association of Administrative Professionals (IAAP)
<http://iaap-txgalv.org>

INSIDE THIS ISSUE

- 1 Executive Notes
- 1 Upcoming Events
- 1 Message from the Heart
- 2 CPS/CAP Recognition
- 2 Member of Excellence
- 2 Keyboard Shortcuts
- 3 Do you want to be a Woman of Influence?
- 3 MMIA Program
- 4 Galveston Resort Raffle

Up Coming Events

Chapter Monthly Meeting

August 5, 2010
 Kelly's Restaurant, LaMarque, TX

Galveston Resort Raffle

Members, Sell those tickets!
 The lucky winner will be drawn at the August 5th Meeting

Inter City Council CPS/CAP Recognition Banquet

October 16, 2010
 Houston, TX

CPS/CAP Testing Dates / Deadlines

August 15, 2010 – Deadline
November 4-5, 2010 – Testing Dates
 February 15, 2011 – Deadline
 May 6-7, 2011 – Testing Dates
 August 15, 2011 – Deadline
 November 4-5, 2011 Testing Dates

2010 EFAM

Hynes Convention Center
July 18-19, 2010

Fall Certification Conference

October 17-20, 2010
 Louisville, KY
 Hilton Seelbach Hotel

Executive Notes

By *Annette Barham CPS/CAP*

Hello Chapter Members

I just want to start with a thank you for all the support and confidence shown as I start my new year as our chapter's president. I welcome any feed back or suggestions on how our chapter can continue to be successful and continue to grow.



I would like to share my theme for this year, "Passionate about Commitment". I thought long and hard on what our theme should be for this year. I feel that we are very passionate about our chapter, IAAP and other professionals. I know we are very committed to our chapter members. So "Passionate about Commitment" seemed to be the best fit for our chapter. Since we are known as such a friendly chapter, I thought that we should let others know that we are very passionate about our commitment.

I also want everyone to know that my commitment to each and every one of you is that I will keep the lines of communication open at all

Please see [Executive Notes](#) on page 2

Message from the Heart!

By *Janine Cmaidalka CPS/CAP*



Dear Galveston County Chapter Members,

I want to thank my board members for an awesome year! I want to thank you members for accepting me as President and helping me grow this past year. I appreciate the President's Award I received in Amarillo at T/L in May which I earned because of your work in our chapter. I am even more thrilled that our Chapter has 14 Members of Excellence! Our small chapter has more MOE's than any chapter in our TX/LA Division! I expect to receive the award for the highest percentage of members earning the Award of Excellence and will

[Continue on page 4](#)

CPS/CAP Recognitions *By Rhonda Driver CPS/CAP*

Congratulations to Mary Contreras CPS and Brenda Slawson CPS for obtaining their certifications. These ladies along with Karla Villeneuve CPS will be honored at the Inter City Council (ICC) CPS/CAP Recognition Banquet on October 16, 2010. Also being honored at the banquet for recertification this year are Cheryl Affolter CPS/CAP, Janine Cmaidalka CPS/CAP, Rhonda Driver CPS/CAP and Lynn Wyatt Maida CPS/CAP. This brings our stats to 52% of chapter membership have their certifications. This is proof of another successful certification study group. The study group has reconvened and two members will be sitting for the CAP exam in November 2010. Please join us as we wish them "Best of Luck!"



Don't forget to go to the IAAP Web community and update your profile!

Goal is to have chapter profiles completed by June 30, 2011



Congratulations to the following members for achieving MOE

Dianna A. Barham, CPS/CAP
 Janine Cmaidalka, CPS/CAP
 Rhonda J. Driver, CPS/CAP
 Georgina F. Eastmond, CPS/CAP
 Catherine K. French, CPS/CAP
 Deborah Grounds Sanders, CPS/CAP
 Bobbie J. Guyton, CPS/CAP
 Janet R. Kidd, CPS/CAP
 Lynn M Wyatt Maida, CPS/CAP
 Tina R. Percy, CPS/CAP
 Lynne E. Purdue, CPS/CAP
 Teresa M. Ramirez
 Pamela J. Stout, CPS/CAP
 Karla S. Villeneuve, CPS

Keyboard Shortcuts!

Windows system key combinations

- F1: Help
- CTRL+ESC: Open **Start** menu
- ALT+TAB: Switch between open programs
- ALT+F4: Quit program
- SHIFT+DELETE: Delete item permanently
- Windows Logo+L: Lock the computer (without using CTRL+ALT+DELETE)

Windows program key combinations

- CTRL+C: Copy
- CTRL+X: Cut
- CTRL+V: Paste
- CTRL+Z: Undo
- CTRL+B: Bold
- CTRL+U: Underline
- CTRL+I: Italic



Executive Corner from page 1

times. This may mean that you receive more than one type of commutation from your Board and/or from me. Sometimes this seems like overkill, but to me it means that the members are always well informed. In today's world, communication is very important. This I can promise, if you need me, I am only a call or email away.

Sincerely,
Annette Barham, CPS/CAP
Galveston County Chapter IAAP President

Do you want to be a “Woman of Influence?”

By Lynne Purdue CPS/CAP

Help yourself! Take classes or join an on-line financial group. Check out Citigroup’s Women & Company to build up your confidence. Start an investment club for the group of women you hang out with.

Check out: <http://new.citi.com/2010/05/citis-women-co-helping-women-pursue-their-financial-goals.shtml>

Have a family? Check out www.familiesandwork.org or www.momrising.org and learn more about family-friendly work policies. Help promote change at your work place if policies don’t meet your needs. These websites have lots of useful information.

Support other women!!! Politics are big right now. If you are a more conservative type: check out the Susan B. Anthony site at: www.sba-list.org or if you are more a liberal check out Emily’s list at www.emilyslist.org for a list of women running for office and views on current legislative matters!

Be a mentor!!! Help girls out who may not have a good role model, help mold our future generations! Volunteer through Big Brothers Big Sisters at www.bbbs.org or volunteer through the Girl Scouts of America at www.girlscouts.org or check out the website for Girls Inc. which inspires girls to be strong, smart and bold at www.girlsinc.org

Purchase Power!!!! Help support woman by buying products that pay women fair wages. If you purchase products from the following websites you know you are helping women: www.tenthousandvillages.com – they work with over 130 artisan groups in 38 countries to pay a fair wage and offer opportunities for a better life. Check out www.worldofgood.com for goods that impact social and environmental causes.

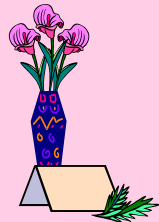
Be vocal! If you know about initiatives or efforts that help women – tell your friends – email them, twitter or blog all about it!

July Anniversaries

Linda Lindquist, July 2009

Beverly Zingrich, July 2008

Lynn Maida CPS/CAP, July 1996



Congratulations to Renee Percy CPS/CAP on the purchase of her new home!



MMIA Program

By Renee Percy CPS/CAP

This is a new program the chapter has started as an outreach to our members who for whatever reason was not able to make it to the monthly meeting. By wearing a yellow ribbon, we are making a commitment to contact at least one absent member to say Hello, make sure everything is okay, and most importantly, just let them know we missed them at the last meeting! The goal is to encourage our members to attend and experience the many benefits of IAAP.

July Birthdays

Margaret Cuellar July 3rd

Cathy French, July 15th

Phraulene Deats, July 19th

Darlene Bordelon July 24th



~~~~~  
**Congratulations to Tina Pennington!**  
 On Friday, July 16<sup>th</sup> she won tickets to  
 both concerts for correctly answering the  
 Trivia questions on Sunny 99.1  
 ~~~~~

Message from the Heart – page 1

also accept our Chapter of Excellence award at EFAM in your honor too! Even though I had nothing to do with it, I am busting with pride that 3 of our members earned CPS this year! Congratulations! Each person in the Galveston County Chapter is awesome and I am grateful for your help and your friendship!

Now, I look forward to a wonderful year with a new slate of officers to continue to move us forward in both our Chapter goals and personal growth!

Blessings to each of you.

*Janine Cmaidalka, CPS/CAP
 Galveston County Chapter
 2009/2010 Past President*



Congratulations Ladies!

Galveston County Chapter Officers 2010-2011

Annette Barham CPS/CAP, President
 Rhonda Driver CPS/CAP, President-Elect
 Karla Villeneuve CPS, Vice President
 Cathy French CPS/CAP, Secretary
 Georgina Eastmond CPS/CAP, Treasurer
 Janine Cmaidalka CPS/CAP, Vice-President

Chapter Fundraiser



Galveston Resorts Raffle

1 night stay at the San Luis Resort and
 Lunch for 2 at the Hilton Resort

\$5 each or 5/\$20

Purchase your tickets from any member



Winner will be drawn on August 5th at
 the monthly chapter meeting.

Visit our Chapter Website at
<http://www.iaap-txgalv.org>

Become a Fan on our FaceBook Page
<http://www.facebook.com/pages/IAAP-Galveston-County-Chapter/317661456133>



See you next month for more Tales!